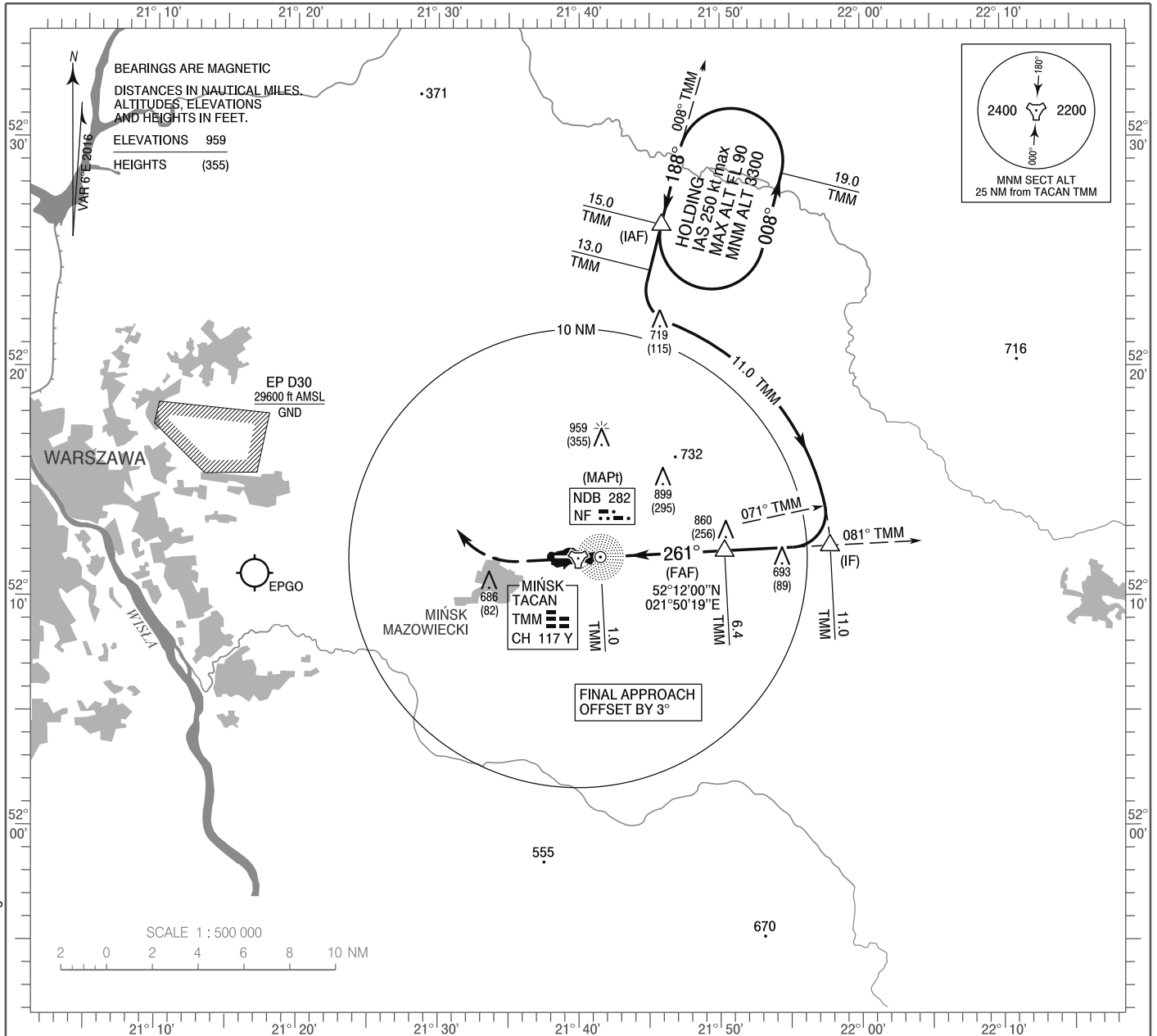


**INSTRUMENT
APPROACH
CHART - ICAO**

AERODROME ELEV 604 ft
THR RWY 26 ELEV 604 ft
HEIGHTS RELATED TO AD ELEV

Mińsk APPROACH 136.250, 278.575
Mińsk TOWER 135.425, 279.075
ATIS 139.900

**MIŃSK MAZOWIECKI
TACAN
RWY 26 (CAT A/B/C/D/E)**

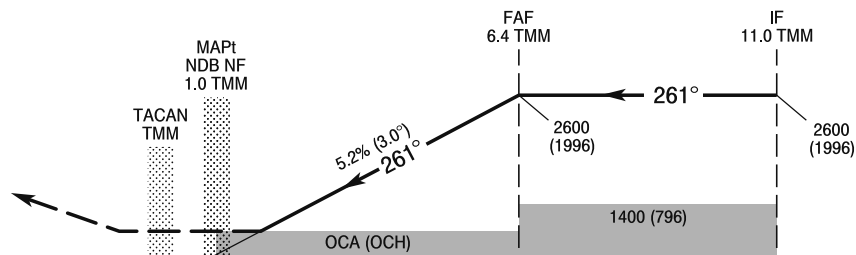


Correction: MSA changed.

MISSED APPROACH

Climb straight ahead to 1500 (896),
then turn right heading 081°
climbing 2600 (1996) to intercept
ARC 11.0 NM TMM
or follow ATC instructions.
No turn before MAPt.

TRANSITION ALTITUDE 6500



ELEV 604
(AD ELEV)

SCALE 1 : 250 000

NM FROM THR RWY 26

OCA (OCH)						Distance FAF - MAPt 5.4 NM							
Cat. of ACFT	A	B	C	D	E	Speed	kt	70	100	135	170	200	230
Straight - in	1115 (511)	1115 (511)	1115 (511)	1115 (511)	1115 (511)	Time	min : s	4 : 37	3 : 14	2 : 24	1 : 54	1 : 37	1 : 25
						Rate of descent	ft / min	421	600	807	1023	1200	1387
Circling	1115 (511)	1115 (511)	1204 (600)	1365 (761)	1467 (863)								

**INSTRUMENT
APPROACH
CHART - ICAO**

**MIŃSK MAZOWIECKI
TACAN
RWY 26 (CAT A/B/C/D/E)**

FIX / POINT	LATITUDE	LONGITUDE	FIX FORMATION	
IAF	52°26'11.9"N	021°45'51.1"E	014.00° GEO (008° MAG) TACAN TMM	15.00 NM TACAN TMM
IF	52°12'13.1"N	021°57'46.7"E	087.00° GEO (081° MAG) TACAN TMM	11.00 NM TACAN TMM
FAF	52°12'00.0"N	021°50'19.0"E	086.94° GEO (081° MAG) TACAN TMM	6.40 NM TACAN TMM
MAPt	52°11'43.6"N	021°41'30.6"E	086.94° GEO (081° MAG) TACAN TMM	0.97 NM TACAN TMM
Final approach descent angle: 3.00°				