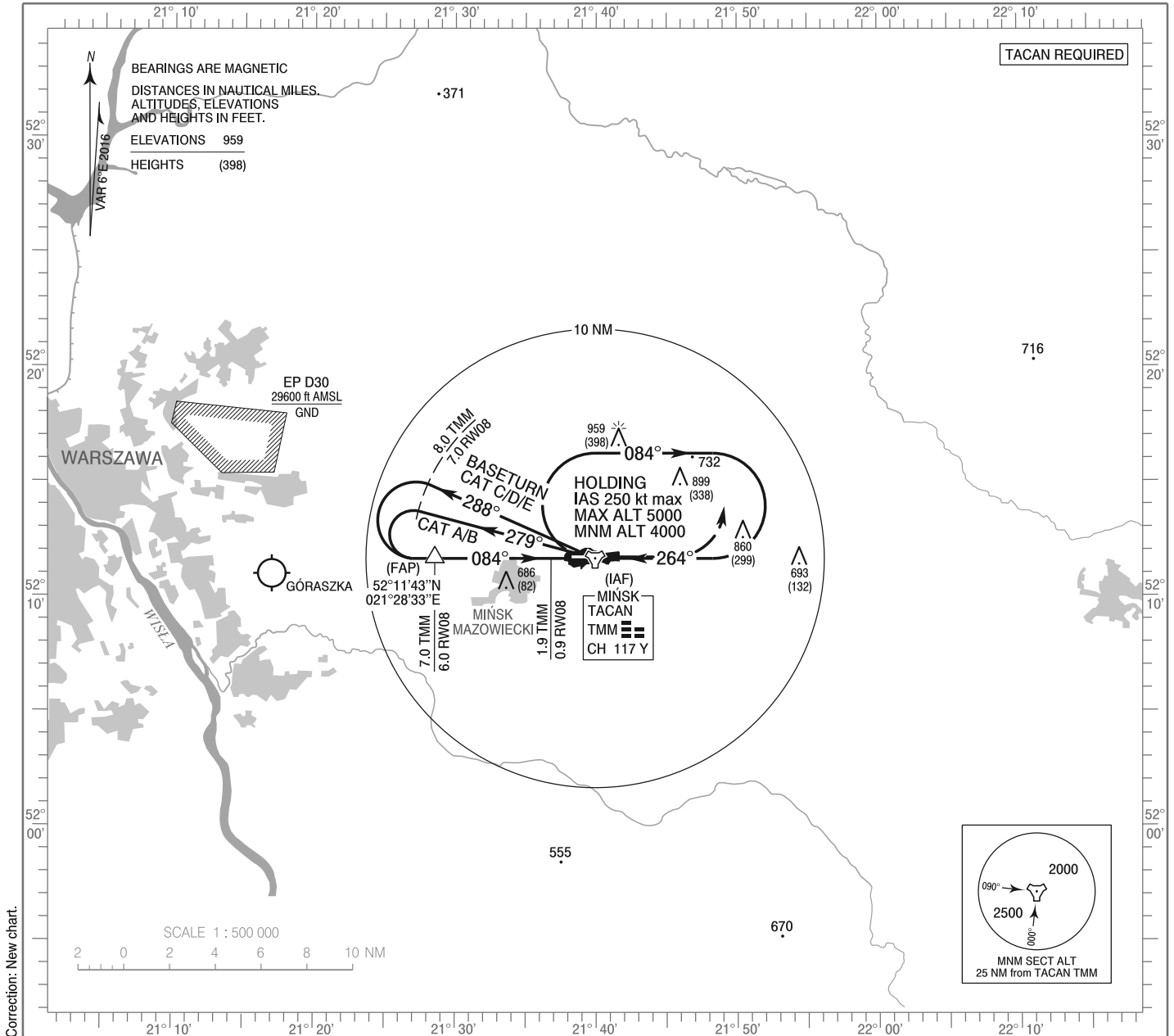


**INSTRUMENT  
APPROACH  
CHART - ICAO**

AERODROME ELEV 604 ft  
THR RWY 08 ELEV 561 ft  
HEIGHTS RELATED TO THR RWY 08

Mińsk PRECISION 126.925, 308.875  
Mińsk APPROACH 136.250, 278.575  
Mińsk TOWER 135.425, 279.075

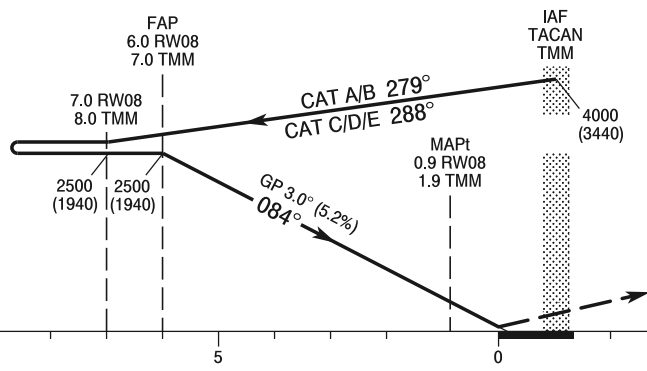
**MIŃSK MAZOWIECKI  
PAR  
RWY 08 (CAT A/B/C/D/E)**



Correction: New chart.

TRANSITION ALTITUDE 6500

**MISSED APPROACH**  
Climb straight ahead to 1500 (940), then turn left to TACAN TMM climbing to 4000 (3440) and follow ATC instructions.



ELEV 561  
(THR RWY 08)

SCALE 1 : 250 000 NM FROM THR RWY 08

OCA (OCH)						Distance FAF - MAPt 5.1 NM								
Cat. of ACFT	A	B	C	D	E	Speed	kt	70	100	135	170	200	230	
Straight - in	PAR	876 (315)	886 (325)	896 (335)	906 (345)	925 (364)	Time	min : s	4 : 17	3 : 00	2 : 13	1 : 45	1 : 29	1 : 21
							Rate of descent	ft / min	415	570	780	980	1140	1320
Circling (OCH AAL)		1115 (511)	1115 (511)	1204 (600)	1365 (761)	1467 (863)								

**INSTRUMENT  
APPROACH  
CHART - ICAO**

**MIŃSK MAZOWIECKI  
PAR  
RWY 08 (CAT A/B/C/D/E)**

FIX / POINT	LATITUDE	LONGITUDE	FIX FORMATION	
IAF TACAN TMM	52°11'40.0"N	021°39'55.4"E		
FAF	52°11'43.4"N	021°28'33.1"E	089.80° GEO (084° MAG) APCH COURSE	7.00 NM TACAN TMM 6.00 NM RW08
MAPt	52°11'44.2"N	021°36'47.8"E	089.80° GEO (084° MAG) APCH COURSE	1.92 NM TACAN TMM 0.90 NM RW08
Final approach descent angle: 3.00°				