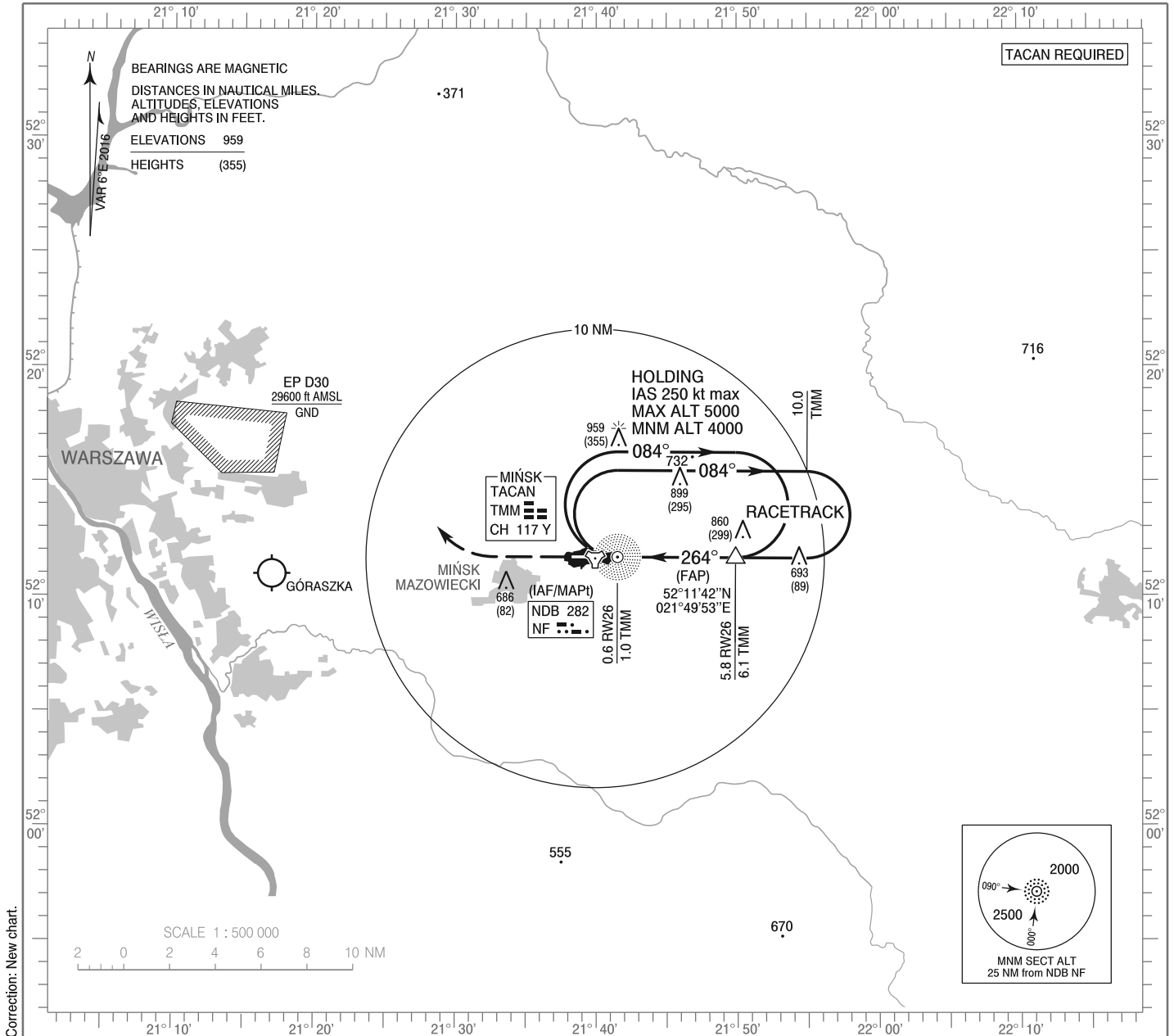


**INSTRUMENT
APPROACH
CHART - ICAO**

AERODROME ELEV 604 ft
THR RWY 26 ELEV 604 ft
HEIGHTS RELATED TO THR RWY 26

Mińsk PRECISION 126.925, 308.875
Mińsk APPROACH 136.250, 278.575
Mińsk TOWER 135.425, 279.075

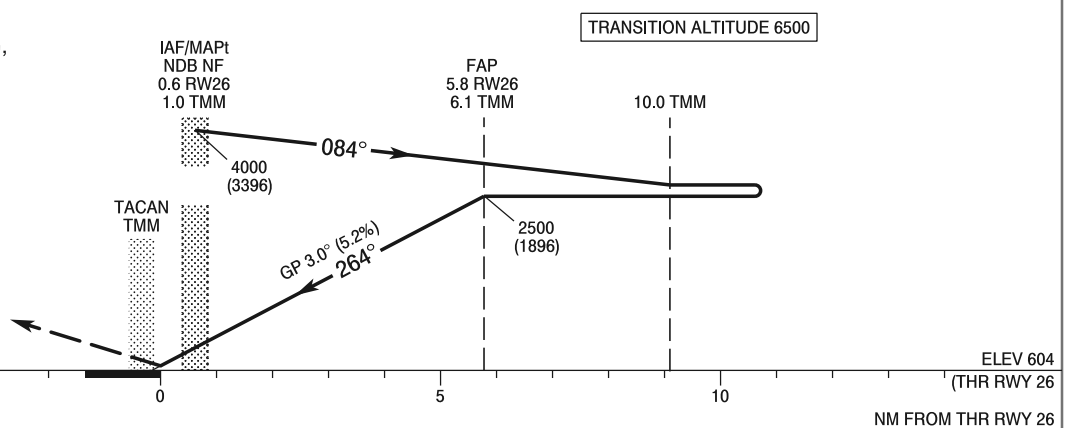
**MIŃSK MAZOWIECKI
PAR
RWY 26 (CAT A/B/C/D/E)**



Correction: New chart.

MISSED APPROACH

Climb straight ahead to 1500 (896), then turn right to NDB NF climbing to 4000 (3396) or follow ATC instructions.



OCA (OCH)						Distance FAF - MAPt 5.2 NM								
Cat. of ACFT	A	B	C	D	E	Speed	kt	70	100	135	170	200	230	
Straight - in	PAR	876 (272)	886 (282)	896 (292)	906 (302)	925 (321)	Time	min : s	4 : 20	3 : 03	2 : 16	1 : 48	1 : 32	1 : 24
							Rate of descent	ft / min	400	570	780	975	1150	1310
Circling (OCH AAL)	1151 (511)	1151 (511)	1204 (600)	1365 (761)	1467 (863)									

**INSTRUMENT
APPROACH
CHART - ICAO**

**MIŃSK MAZOWIECKI
PAR
RWY 26 (CAT A/B/C/D/E)**

FIX / POINT	LATITUDE	LONGITUDE	FIX FORMATION	
IAF NDB NF	52°11'43.6"N	021°41'30.6"E		
FAF	52°11'41.6"N	021°49'53.0"E	270.42° GEO (264° MAG) APCH COURSE	6.12 NM TACAN TMM 5.80 NM RW26
MAPt	52°11'43.6"N	021°41'30.6"E	270.31° GEO (264° MAG) APCH COURSE	0.97 NM TACAN TMM 0.64 NM RW26
Final approach descent angle: 3.00°				