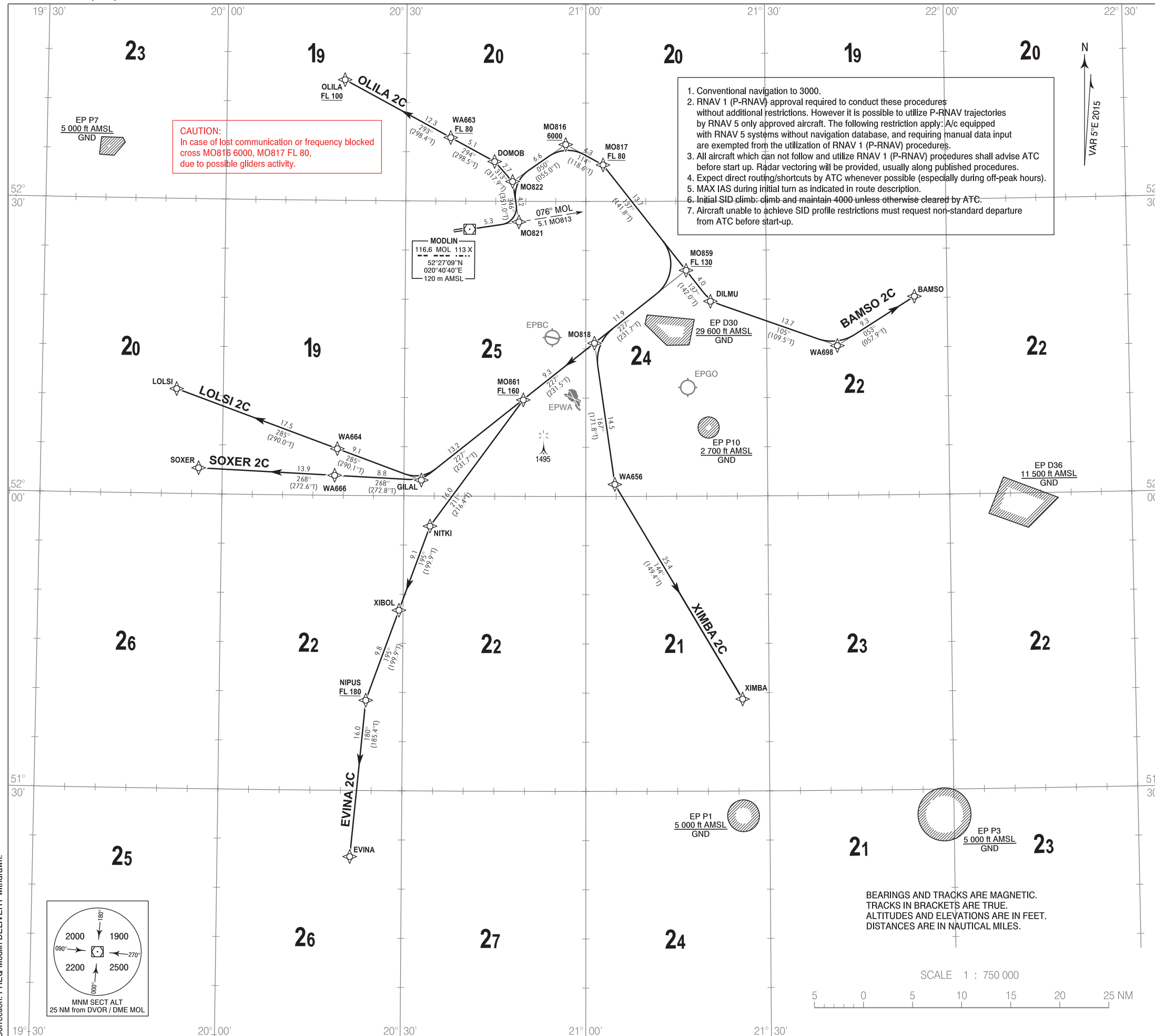


**RNAV 1
STANDARD DEPARTURE CHART
INSTRUMENT (SID) - ICAO**

TRANSITION ALTITUDE 6500

Warszawa DIRECTOR 129.375
Warszawa APPROACH 125.050, 128.800
Modlin TOWER 123.925

**Warszawa / Modlin
RWY 08
CHARLIE**



CAUTION:
In case of lost communication or frequency blocked
cross MO816 6000, MO817 FL 80,
due to possible gliders activity.

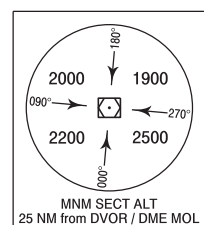
1. Conventional navigation to 3000.
2. RNAV 1 (P-RNAV) approval required to conduct these procedures without additional restrictions. However it is possible to utilize P-RNAV trajectories by RNAV 5 only approved aircraft. The following restriction apply: A/c equipped with RNAV 5 systems without navigation database, and requiring manual data input are exempted from the utilization of RNAV 1 (P-RNAV) procedures.
3. All aircraft which can not follow and utilize RNAV 1 (P-RNAV) procedures shall advise ATC before start up. Radar vectoring will be provided, usually along published procedures.
4. Expect direct routing/shortcuts by ATC whenever possible (especially during off-peak hours).
5. MAX IAS during initial turn as indicated in route description.
6. Initial SID climb: climb and maintain 4000 unless otherwise cleared by ATC.
7. Aircraft unable to achieve SID profile restrictions must request non-standard departure from ATC before start-up.

WAYPOINT LIST (WGS 84)

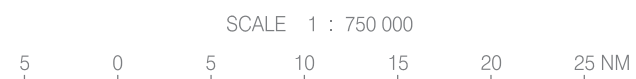
BAMS0	52°20'09.1"N	021°54'34.5"E
DILMU	52°19'49.0"N	021°20'41.8"E
DOMOB	52°34'02.2"N	020°44'47.0"E
EVINA	51°23'16.0"N	020°21'36.0"E
GILAL	52°01'36.5"N	020°32'52.4"E
LOLSI	52°10'38.9"N	019°52'17.0"E
NIPUS	51°39'10.8"N	020°23'59.8"E
NITKI	51°56'56.1"N	020°34'20.3"E
OLILA	52°42'16.0"N	020°19'42.0"E
SOXER	52°02'37.8"N	019°56'05.9"E
XIBOL	51°48'21.7"N	020°29'19.6"E
XIMBA	51°39'21.0"N	021°25'40.0"E
MO821	52°27'54.4"N	020°48'51.6"E
MO822	52°32'00.8"N	020°47'47.4"E
MO816	52°35'46.7"N	020°56'38.9"E
MO817	52°33'42.4"N	021°02'52.8"E
MO818	52°15'34.7"N	021°01'26.6"E
MO859	52°22'58.3"N	021°16'40.3"E
MO861	52°09'48.5"N	020°49'39.6"E
WA663	52°36'27.7"N	020°37'26.2"E
WA664	52°04'44.3"N	020°18'58.0"E
WA666	52°02'01.7"N	020°18'33.6"E
WA698	52°15'12.9"N	021°41'42.6"E
WA656	52°01'13.2"N	021°04'47.7"E

RADIO COMMUNICATION FAILURE PROCEDURE

- SET TRANSPONDER TO 7600
- a) Continue on assigned and acknowledged SID.
After 3 minutes from setting 7600 climb to FPL flight level.
 - b) If being vectored, continue on assigned heading for 3 minutes from setting 7600 then proceed direct to last SID WP climbing to FPL flight level.



BEARINGS AND TRACKS ARE MAGNETIC.
TRACKS IN BRACKETS ARE TRUE.
ALTITUDES AND ELEVATIONS ARE IN FEET.
DISTANCES ARE IN NAUTICAL MILES.



Correction: FREQ Modlin DELIVERY withdrawn.