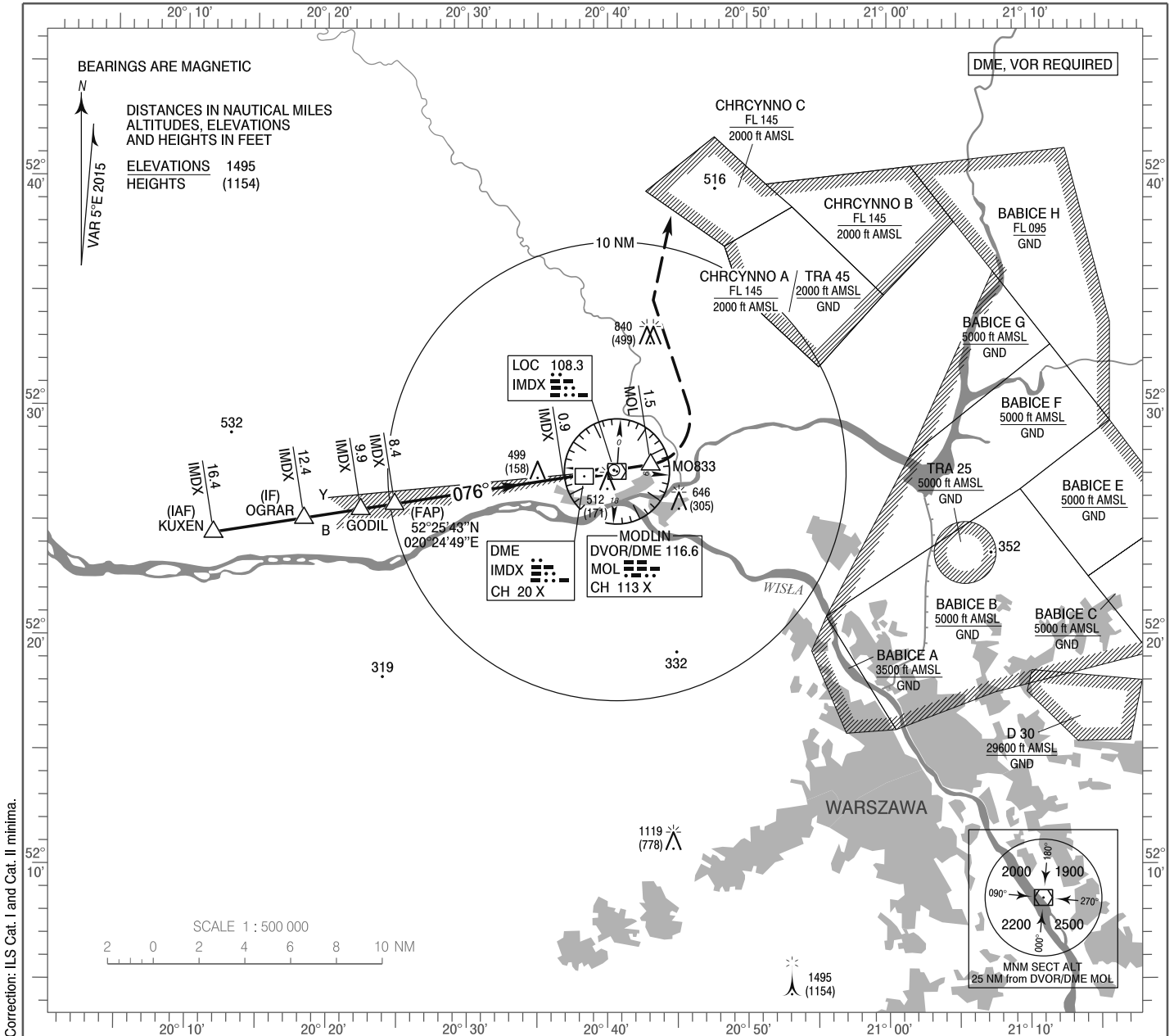


**INSTRUMENT
APPROACH
CHART - ICAO**

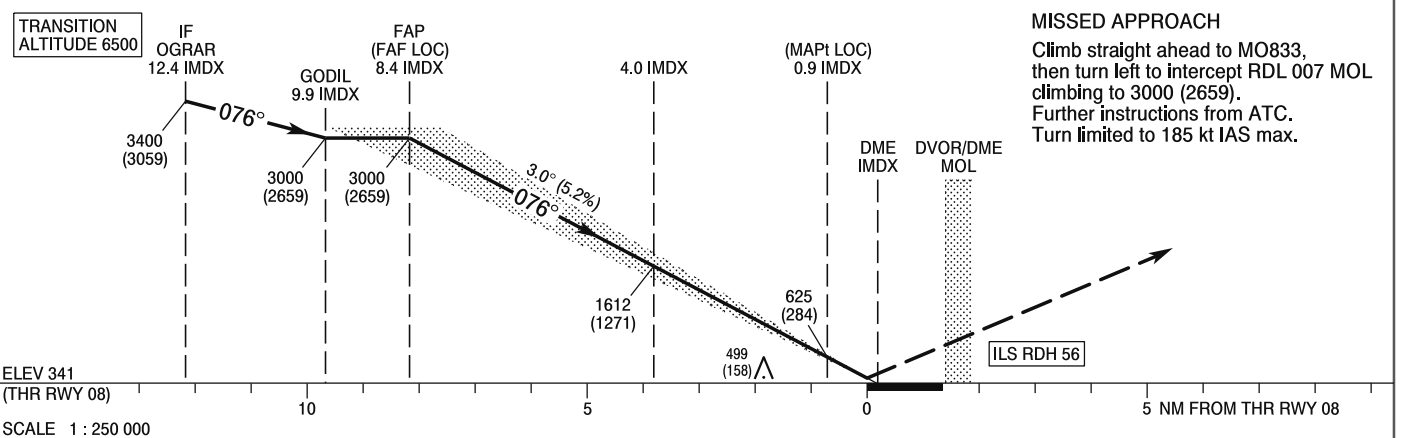
AERODROME ELEV 344 ft
THR RWY 08 ELEV 341 ft
HEIGHTS RELATED TO THR RWY 08

Warszawa DIRECTOR 129.375
Warszawa APPROACH 125.050, 128.800
Modlin TOWER 123.925
Modlin INFORMATION 120.325

**Warszawa / Modlin
ILS CAT II or LOC
RWY 08 (CAT A/B/C/D)**



Correction: ILS Cat. I and Cat. II minima.



OCA (OCH)					Distance FAF - MAPt 7.5 NM								
Cat. of ACFT	Distance				Speed	kt	80	100	120	140	160	180	
	A	B	C	D									
Straight - in	Cat. I	502 (161)	514 (173)	522 (181)	533 (192)	Time	min : s	5 : 36	4 : 28	3 : 44	3 : 12	2 : 48	2 : 29
	Cat. II	414 (73)	431 (90)	443 (102)	457 (116)	Rate of descent	ft / min	420	530	630	740	840	950
	LOC	750 (409)	750 (409)	750 (409)	750 (409)								
Final approach distance/altitude (height)													
Circling (OCH AAL)*	Distance	810 (466)	840 (496)	940 (596)	1040 (696)	7	6	5	4	3			
		Altitude (height)	2540 (2199)	2230 (1889)	1910 (1569)	1600 (1259)	1280 (939)						

*For circling restrictions see overleaf

INSTRUMENT
APPROACH
CHART - ICAO

WARSAWA / Modlin
ILS CAT II or LOC
RWY 08 (CAT A/B/C/D)

FIX / POINT	LATITUDE	LONGITUDE	FIX FORMATION	
IAF KUXEN	52°24'27.7"N	020°11'54.4"E	080.89° GEO (076° MAG) LOC IMDX	16.37 NM DME IMDX
IF OGRAR	52°25'05.4"N	020°18'21.5"E	080.98° GEO (076° MAG) LOC IMDX	12.37 NM DME IMDX
GODIL	52°25'28.9"N	020°22'23.5"E	081.04° GEO (076° MAG) LOC IMDX	9.87 NM DME IMDX
FAP (FAF LOC)	52°25'42.9"N	020°24'49.4"E	081.06° GEO (076° MAG) LOC IMDX	8.36 NM DME IMDX
MAPt (LOC)	52°26'51.7"N	020°36'51.8"E	081.06° GEO (076° MAG) LOC IMDX	0.90 NM DME IMDX
MO833	52°27'26.6"N	020°43'04.1"E	078.37° GEO (073° MAG) DVOR MOL	1.50 NM DME MOL
Final approach descent angle: 3.00°				

