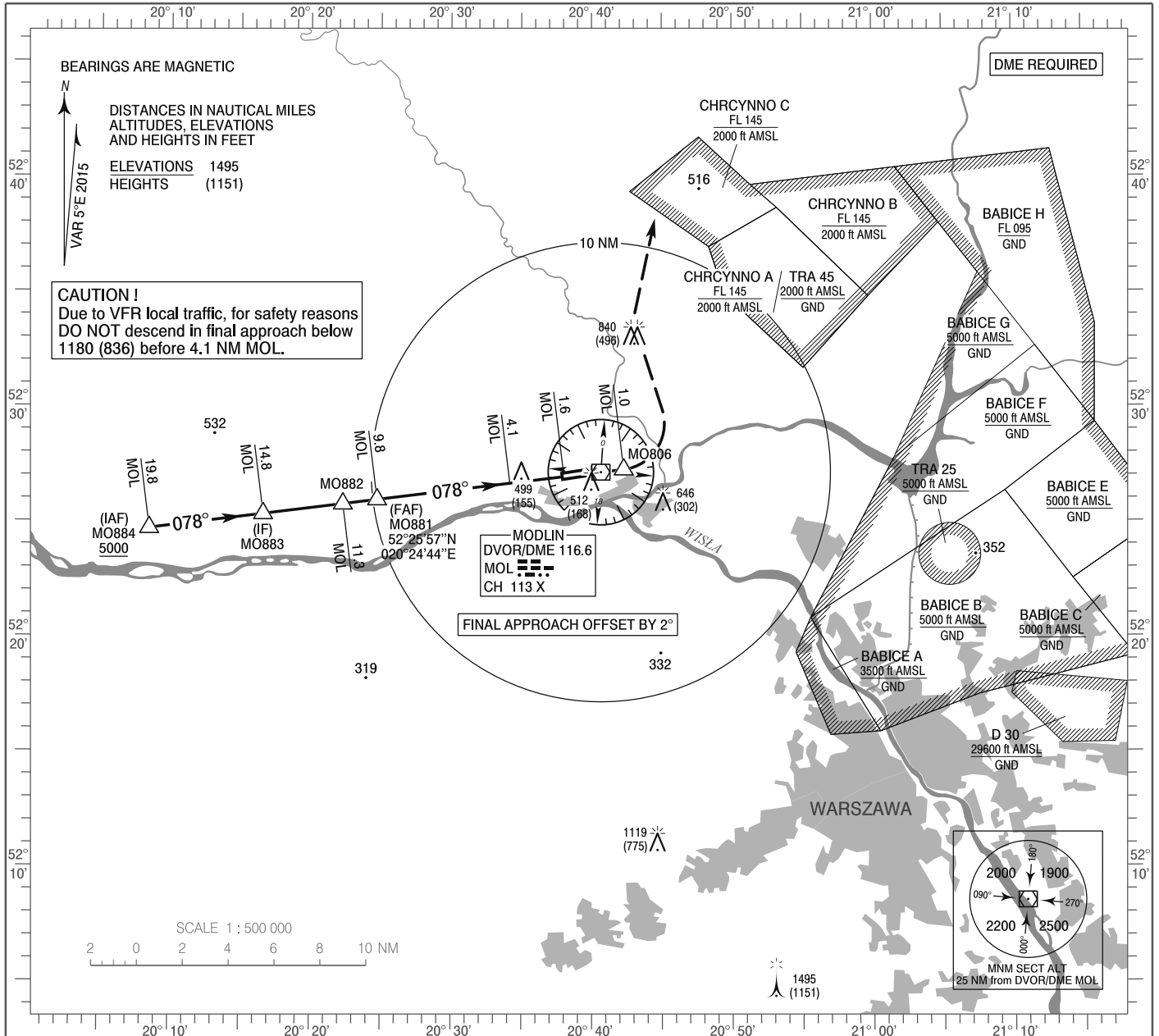


**INSTRUMENT  
APPROACH  
CHART - ICAO**

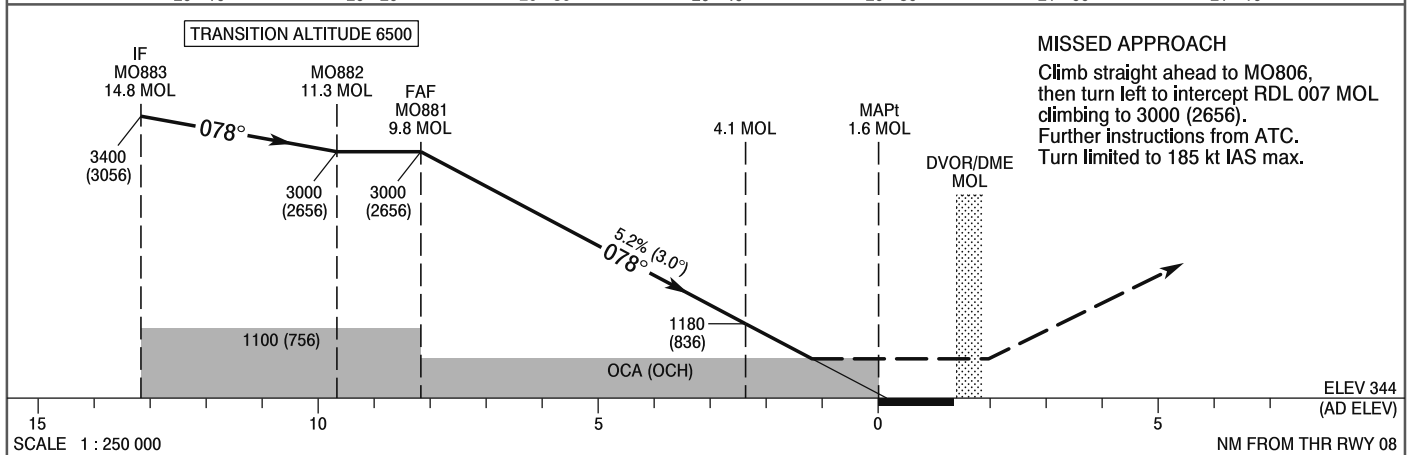
AERODROME ELEV 344 ft  
THR RWY 08 ELEV 341 ft  
HEIGHTS RELATED TO AD ELEV

Warszawa DIRECTOR 129.375  
Warszawa APPROACH 125.050, 128.800  
Modlin TOWER 123.925  
Modlin INFORMATION 120.325

**Warszawa / Modlin  
VOR  
RWY 08 (CAT A/B/C/D)**



Correction: Note on chart: Profile.



OCA (OCH)					Distance FAF - MAPt 8.2 NM							
Cat. of ACFT	A	B	C	D	Speed	kt	80	100	120	140	160	180
Straight-in	750 (406)	750 (406)	750 (406)	750 (406)	Time	min : s	6 : 09	4 : 55	4 : 06	3 : 31	3 : 04	2 : 44
					Rate of descent	ft / min	430	530	640	750	850	960
					Final approach distance/altitude (height)							
Circling*	810 (466)	840 (496)	940 (596)	1040 (696)	Distance	7	6	5	4	3		
					Altitude (height)	2110 (1766)	1790 (1446)	1470 (1126)	1150 (806)	830 (486)		

**INSTRUMENT  
APPROACH  
CHART - ICAO**

**Warszawa / Modlin  
VOR  
RWY 08 (CAT A/B/C/D)**

FIX / POINT	LATITUDE	LONGITUDE	FIX FORMATION	
IAF MO884	52°24'41.5"N	020°08'31.9"E	263.09° GEO (258° MAG) DVOR MOL	19.82 NM DME MOL
IF MO883	52°25'19.4"N	020°16'37.9"E	263.09° GEO (258° MAG) DVOR MOL	14.82 NM DME MOL
MO882	52°25'45.6"N	020°22'18.3"E	263.09° GEO (258° MAG) DVOR MOL	11.32 NM DME MOL
FAF MO881	52°25'56.8"N	020°24'44.2"E	263.09° GEO (258° MAG) DVOR MOL	9.82 NM DME MOL
MAPt	52°26'56.8"N	020°38'01.6"E	263.09° GEO (258° MAG) DVOR MOL	1.63 NM DME MOL
MO806	52°27'15.7"N	020°42'17.3"E	083.09° GEO (078° MAG) DVOR MOL	1.00 NM DME MOL
Final approach descent angle: 3.00°				

