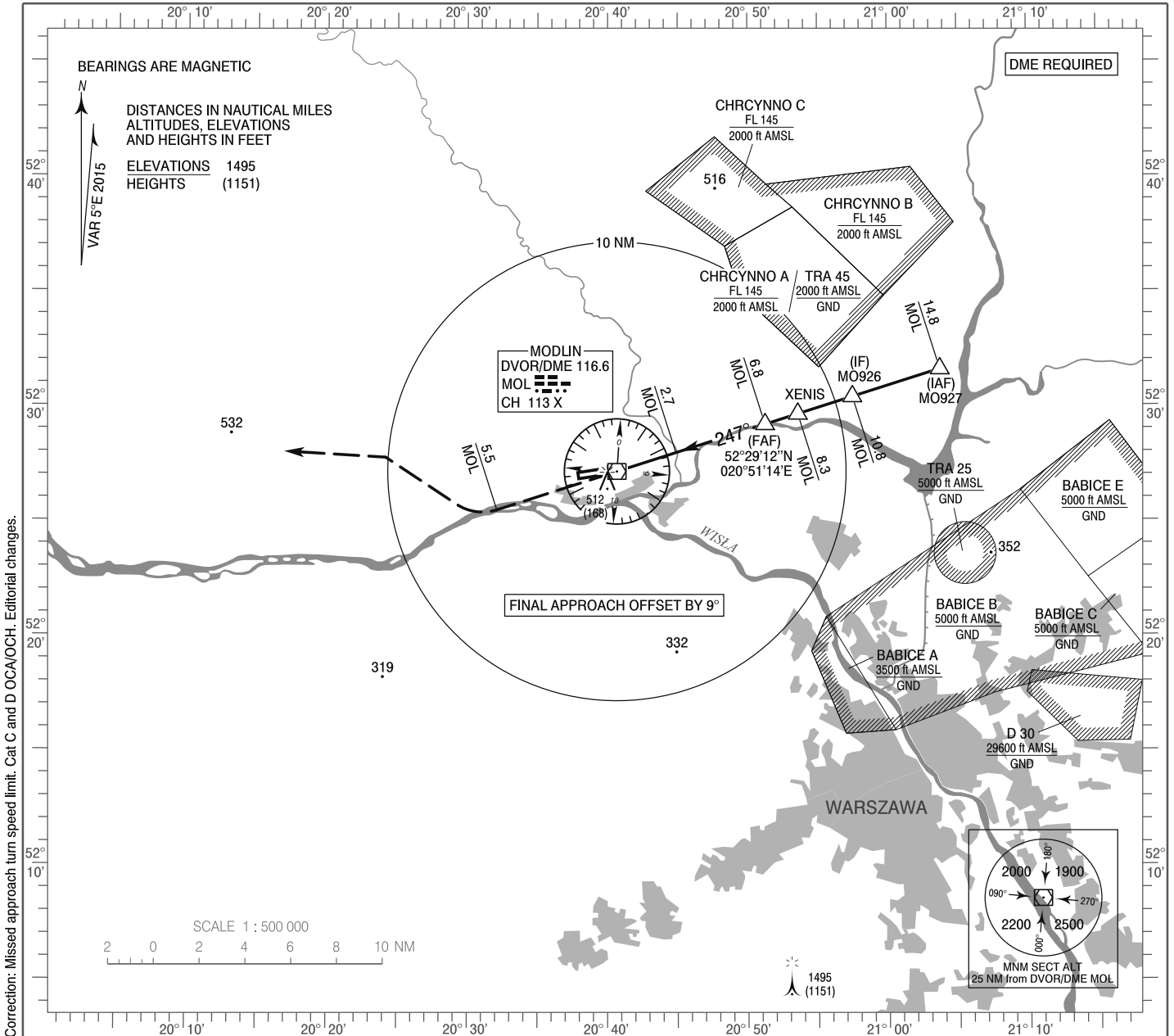


**INSTRUMENT
APPROACH
CHART - ICAO**

AERODROME ELEV 344 ft
THR RWY 26 ELEV 340 ft
HEIGHTS RELATED TO AD ELEV

Warszawa DIRECTOR 129.375
Warszawa APPROACH 125.050, 128.800
Modlin TOWER 123.925
Modlin INFORMATION 120.325

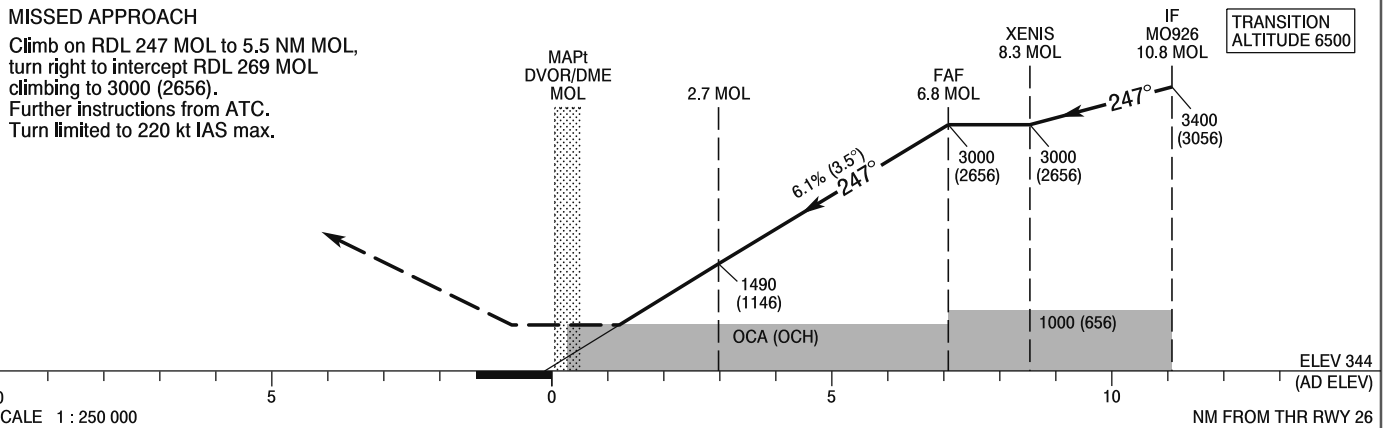
**WARSZAWA / Modlin
VOR
RWY 26 (CAT A/B/C/D)**



Correction: Missed approach turn speed limit. Cat C and D OCA/OCH. Editorial changes.

MISSED APPROACH

Climb on RDL 247 MOL to 5.5 NM MOL, turn right to intercept RDL 269 MOL climbing to 3000 (2656). Further instructions from ATC. Turn limited to 220 kt IAS max.



OCA (OCH)					Distance FAF - MAPt 6.8 NM							
Cat. of ACFT	A	B	C	D	Speed	kt	80	100	120	140	160	180
	Straight-in	740 (396)	790 (446)	830 (486)	850 (506)	Time	min : s	5 : 05	4 : 04	3 : 23	2 : 54	2 : 33
					Rate of descent	ft / min	500	620	750	870	990	1120
Circling*	810 (466)	840 (496)	940 (596)	1040 (696)	Final approach distance/altitude (height)							
					Distance	5	4	3	2	1		
*For circling restrictions see overleaf					Altitude (height)	2340 (1996)	1970 (1626)	1600 (1256)	1250 (886)	860 (516)		

**INSTRUMENT
APPROACH
CHART - ICAO**

**WARSZAWA / Modlin
VOR
RWY 26 (CAT A/B/C/D)**

FIX / POINT	LATITUDE	LONGITUDE	FIX FORMATION	
IAF MO927	52°31'35.7"N	021°03'43.4"E	072.29° GEO (067° MAG) DVOR MOL	14.78 NM DME MOL
IF MO926	52°30'23.8"N	020°57'28.6"E	072.29° GEO (067° MAG) DVOR MOL	10.78 NM DME MOL
XENIS	52°29'38.8"N	020°53'34.5"E	072.29° GEO (067° MAG) DVOR MOL	8.28 NM DME MOL
FAF	52°29'11.7"N	020°51'14.1"E	072.29° GEO (067° MAG) DVOR MOL	6.78 NM DME MOL
MAPt DVOR/DME MOL	52°27'08.6"N	020°40'40.0"E		
Final approach descent angle: 3.50°				

