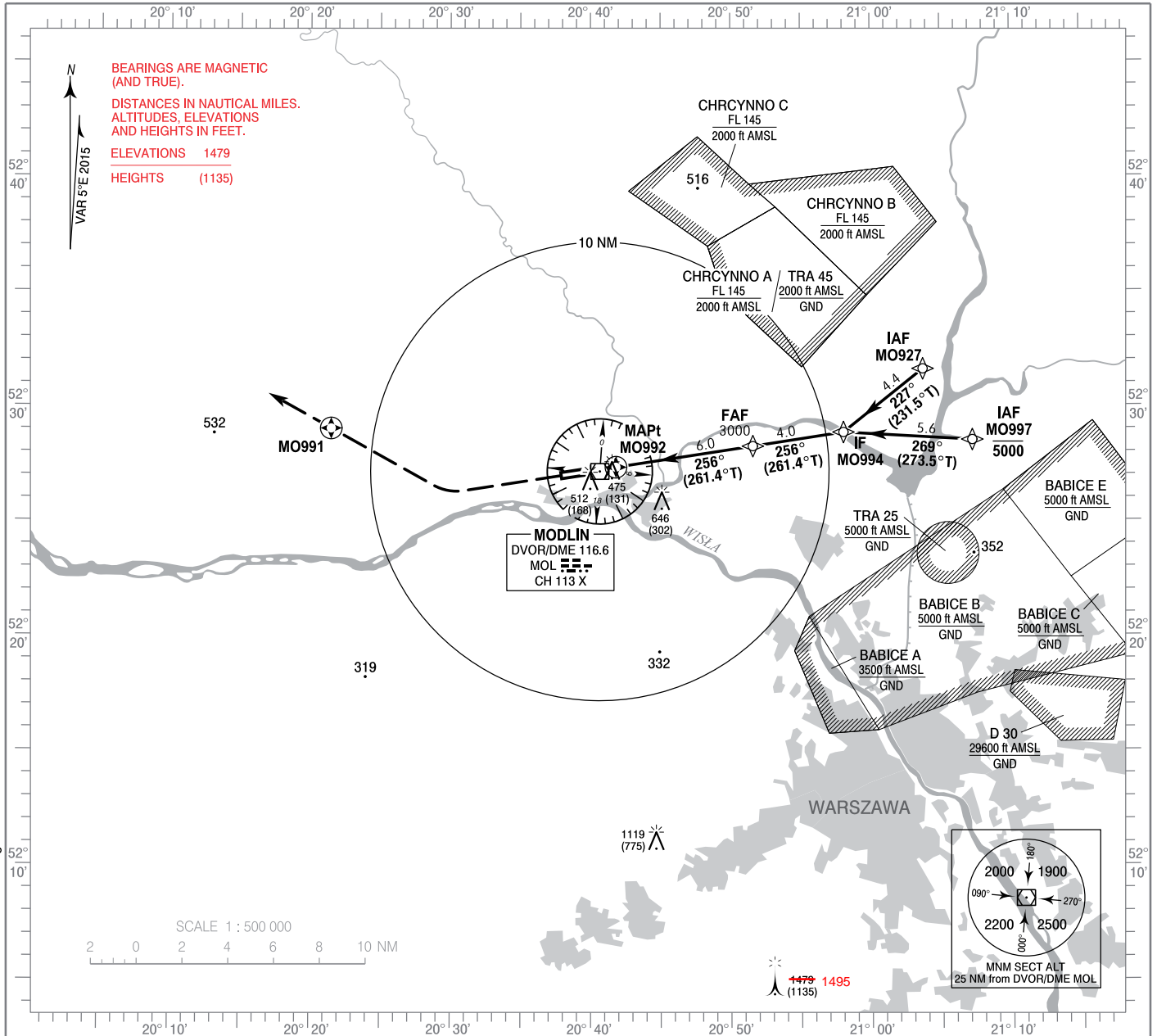


**INSTRUMENT
APPROACH
CHART - ICAO**

AERODROME ELEV 344 ft
THR RWY 26 ELEV 340 ft
HEIGHTS RELATED TO AD ELEV

Warszawa DIRECTOR 129.375
Warszawa APPROACH 125.050, 128.800
Modlin TOWER 123.925
Modlin INFORMATION 120.325

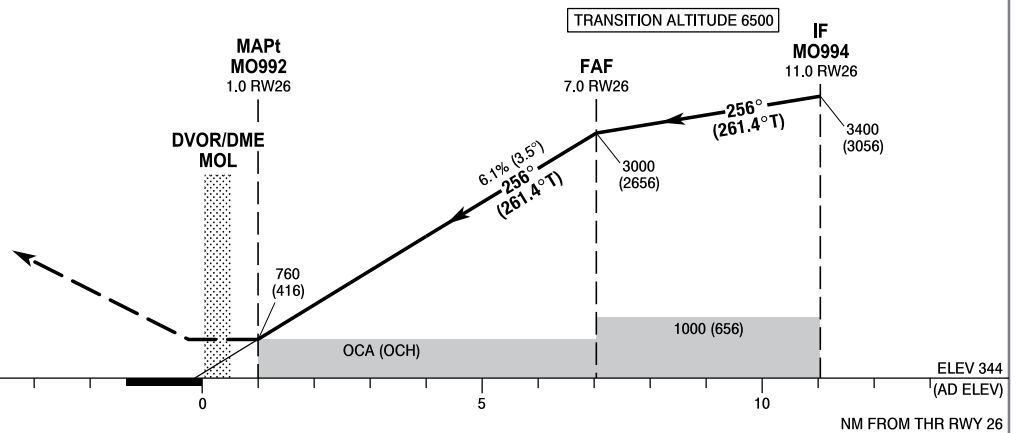
**WARSZAWA / Modlin
RNAV (GNSS)
RWY 26 (CAT A/B/C/D)**



Correction: VAR. Editorial changes.

MISSED APPROACH

Climb straight ahead to 1600 (1256), then turn right DCT MO991 climbing to 3000 (2656). Further instructions from ATC. Turn limited to 185 kt IAS max.



OCA (OCH)					Distance FAF - MAPt 6.0 NM									
Cat. of ACFT	LNAV	A	B	C	D	Speed	kt	80	100	120	140	160	180	
		Straight-in		760 (416)	760 (416)	760 (416)	760 (416)	Time	min : s	4 : 32	3 : 38	3 : 01	2 : 35	2 : 16
						Rate of descent	ft / min	500	620	750	870	990	1120	
Circling*					810 (466)	840 (496)	940 (596)	1040 (696)	Final approach distance/altitude (height)					
					Distance			6	4	2				
					Altitude (height)			2620 (2276)	1880 (1536)	1140 (796)				

