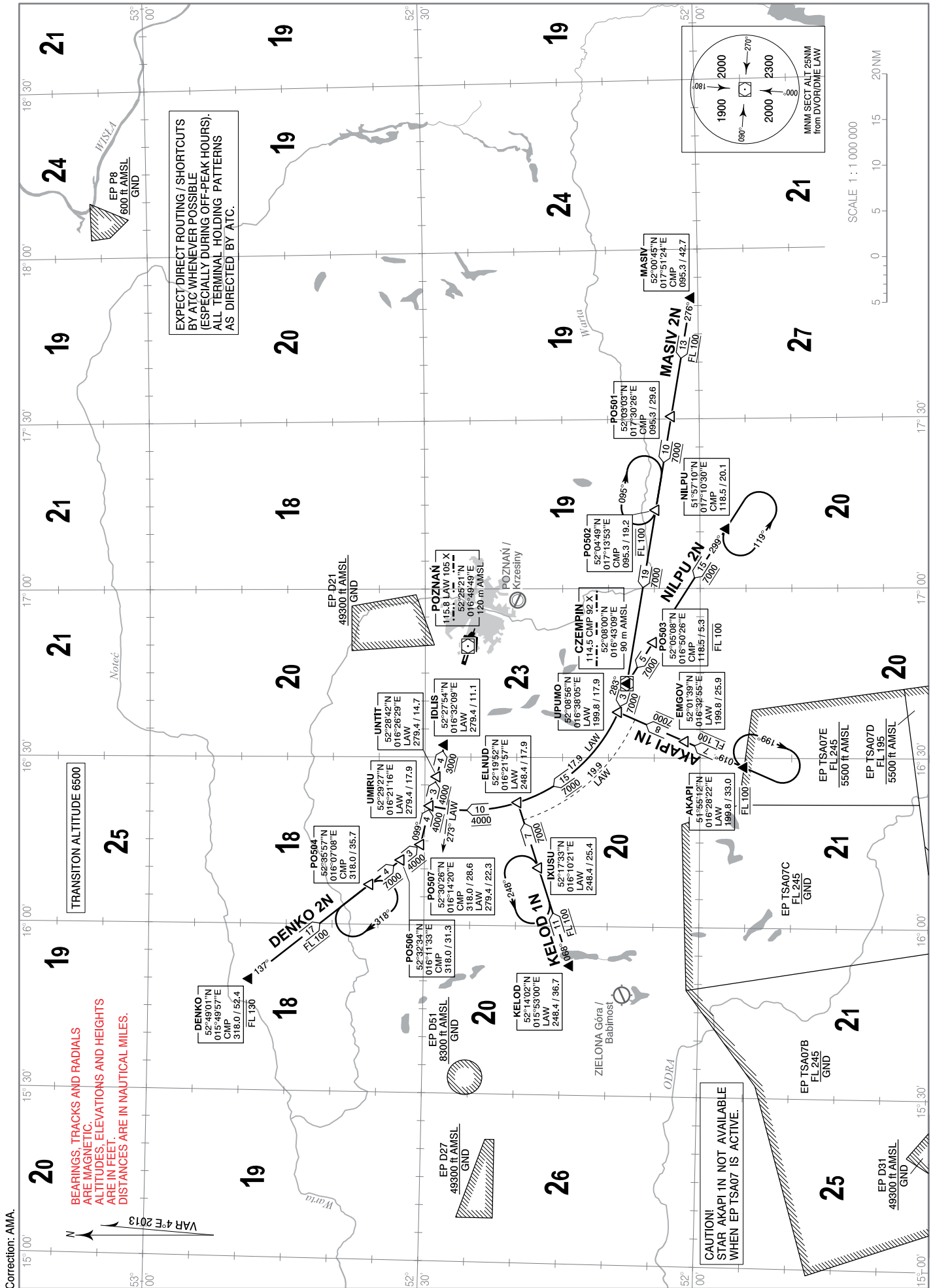


STANDARD ARRIVAL CHART  
INSTRUMENT  
(STAR) - ICAO

Poznań APPROACH 129.025  
Poznań TOWER 119.975

Poznań - Ławica  
RWY 10



STANDARD ARRIVAL CHART  
INSTRUMENT (STAR) - ICAOPOZNAŃ / Ławica  
RWY 10

DESIGNATOR	IDENTIFICATION SIGNIFICANT POINTS	MAG TRACK (°)	DISTANCE NM	ALTITUDE RESTRICTIONS	REMARKS
AKAPI 1N AKAPI ONE NOVEMBER	▲ REP AKAPI	019	7	<u>FL 100</u>	Cross AKAPI at FL 100
	△ REP EMGOV	019	8	<u>7000 ft</u>	
	△ REP UPUMO	DME arc 17.9 NM LAW	15	<u>7000 ft</u>	
	△ REP ELNUD	DME arc 17.9 NM LAW	10	<u>4000 ft</u>	
	△ REP UMIRU	099	3	<u>4000 ft</u>	
	△ REP UNTIT	099	4	<u>3000 ft</u>	
	▲ REP IDLIS				
DENKO 2N DENKO TWO NOVEMBER	▲ REP DENKO	137	17	<u>FL 100</u>	Cross DENKO at/or below FL 130
	△ REP PO504	137	4	<u>7000 ft</u>	
	△ REP PO506	137	3	<u>4000 ft</u>	
	△ REP PO507	099	4	<u>4000 ft</u>	
	△ REP UMIRU	099	3	<u>4000 ft</u>	
	△ REP UNTIT	099	4	<u>3000 ft</u>	
	▲ REP IDLIS				
KELOD 1N KELOD ONE NOVEMBER	▲ REP KELOD	068	11	<u>FL 100</u>	
	△ REP IXUSU	068	7	<u>7000 ft</u>	
	△ REP ELNUD	DME arc 17.9 NM LAW	10	<u>4000 ft</u>	
	△ REP UMIRU	099	3	<u>4000 ft</u>	
	△ REP UNTIT	099	4	<u>3000 ft</u>	
	▲ REP IDLIS				
MASIV 2N MASIV TWO NOVEMBER	▲ REP MASIV	276	13	<u>FL 100</u>	Cross PO502 at/or below FL 100
	△ REP PO501	276	10	<u>7000 ft</u>	
	△ REP PO502	276	19	<u>7000 ft</u>	
	▲ DVOR/DME CMP	283	3	<u>7000 ft</u>	
	△ REP UPUMO	DME arc 17.9 NM LAW	15	<u>7000 ft</u>	
	△ REP ELNUD	DME arc 17.9 NM LAW	10	<u>4000 ft</u>	
	△ REP UMIRU	099	3	<u>4000 ft</u>	
	△ REP UNTIT	099	4	<u>3000 ft</u>	
	▲ REP IDLIS				
NILPU 2N NILPU TWO NOVEMBER	▲ REP NILPU	299	15	<u>7000 ft</u>	Cross PO503 at/or below FL 100
	△ REP PO503	299	5	<u>7000 ft</u>	
	▲ DVOR/DME CMP	283	3	<u>7000 ft</u>	
	△ REP UPUMO	DME arc 17.9 NM LAW	15	<u>7000 ft</u>	
	△ REP ELNUD	DME arc 17.9 NM LAW	10	<u>4000 ft</u>	
	△ REP UMIRU	099	3	<u>4000 ft</u>	
	△ REP UNTIT	099	4	<u>3000 ft</u>	
	▲ REP IDLIS				