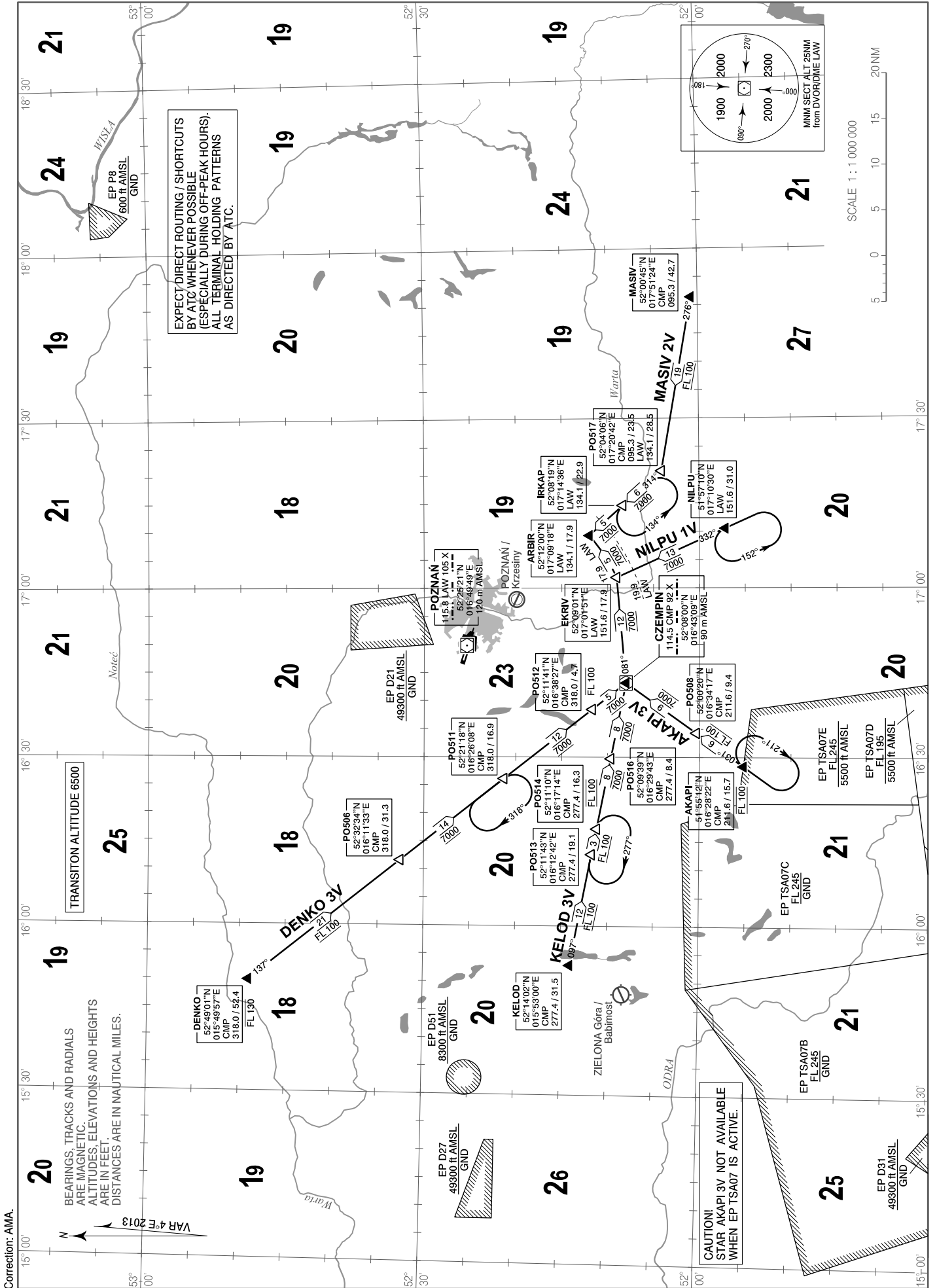


STANDARD ARRIVAL CHART
INSTRUMENT
(STAR) - ICAO

Poznań APPROACH 129.025
Poznań TOWER 119.975

Poznań - Ławica
RWY 28

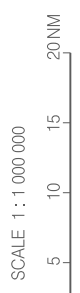
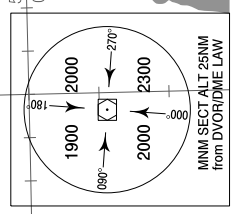


Correction: AMA.

BEARINGS, TRACKS AND RADIALS
ARE MAGNETIC.
ALTITUDES, ELEVATIONS AND HEIGHTS
ARE IN FEET.
DISTANCES ARE IN NAUTICAL MILES.

EXPECT DIRECT ROUTING / SHORTCUTS
BY ATC WHENEVER POSSIBLE
(ESPECIALLY DURING OFF-PEAK HOURS).
ALL TERMINAL HOLDING PATTERNS
AS DIRECTED BY ATC.

CAUTION!
STAR AKAPI3V NOT AVAILABLE
WHEN EP-TSA07 IS ACTIVE.



**STANDARD ARRIVAL CHART
INSTRUMENT (STAR) - ICAO**
**POZNAŃ / Ławica
RWY 28**

DESIGNATOR	IDENTIFICATION SIGNIFICANT POINTS	MAG TRACK (°)	DISTANCE NM	ALTITUDE RESTRICTIONS	REMARKS
AKAPI 3V AKAPI THREE VICTOR	▲ REP AKAPI	031	6	FL 100	Cross AKAPI at FL 100
	△ REP PO508	031	9	7000 ft	
	▲ DVOR/DME CMP	081	12	7000 ft	
	△ REP EKRIV	DME arc 17.9 NM LAW	5	7000 ft	
	▲ REP ARBIR				
DENKO 3V DENKO THREE VICTOR	▲ REP DENKO	137	21	FL 100	Cross DENKO at/or below FL 130 Cross PO512 at/or below FL 100
	△ REP VPO506	138	14	7000 ft	
	△ REP PO511	138	12	7000 ft	
	△ REP PO512	138	5	7000 ft	
	▲ DVOR/DME CMP	081	12	7000 ft	
	△ REP EKRIV	DME arc 17.9 NM LAW	5	7000 ft	
	▲ REP ARBIR				
KELOD 3V KELOD THREE VICTOR	▲ REP KELOD	097	12	FL 100	Cross PO514 at FL 100
	△ REP PO513	097	3	FL 100	
	△ REP PO514	097	8	7000 ft	
	△ REP PO516	097	8	7000 ft	
	▲ DVOR/DME CMP	081	12	7000 ft	
	△ REP EKRIV	DME arc 17.9 NM LAW	5	7000 ft	
	▲ REP ARBIR				
MASIV 2V MASIV TWO VICTOR	▲ REP MASIV	276	19	FL 100	
	△ REP PO517	314	6	7000 ft	
	△ REP IRKAP	314	5	7000 ft	
	▲ REP ARBIR				
NILPU 1V NILPU ONE VICTOR	▲ REP NILPU	332	13	7000 ft	
	△ REP EKRIV	DME arc 17.9 NM LAW	5	7000 ft	
	▲ REP ARBIR				