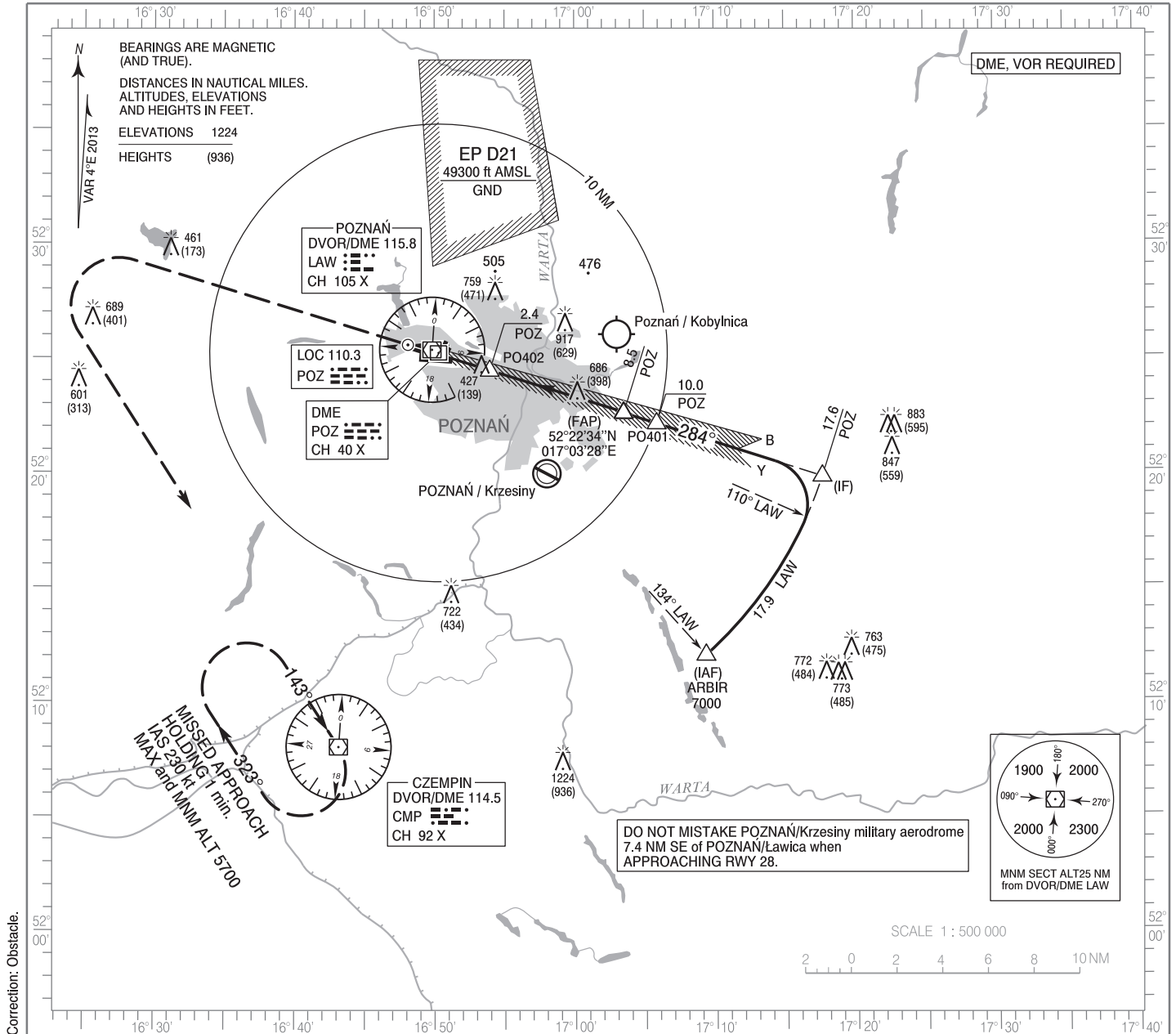


**INSTRUMENT  
APPROACH  
CHART - ICAO**

AERODROME ELEV 308 ft  
THR RWY 28 ELEV 288 ft  
HEIGHTS RELATED TO THR RWY 28

Poznań APPROACH 129.025  
Poznań TOWER 119.975  
ATIS 124.700

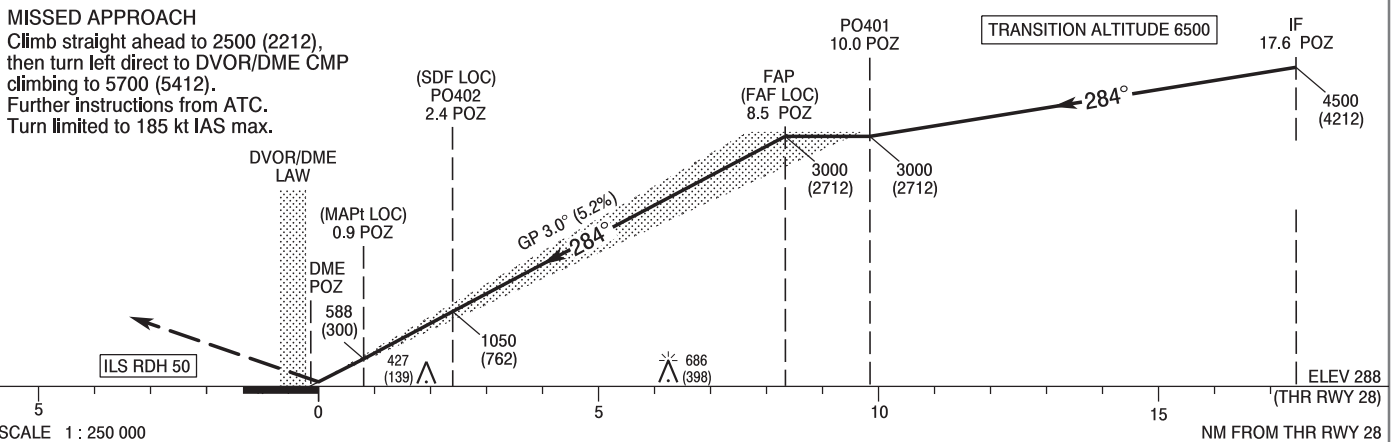
**Poznań - Ławica  
ILS or LOC  
RWY 28 (CAT A/B/C/D)**



Correction: Obstacle.

**MISSED APPROACH**

Climb straight ahead to 2500 (2212), then turn left direct to DVOR/DME CMP climbing to 5700 (5412). Further instructions from ATC. Turn limited to 185 kt IAS max.



OCA (OCH)					Distance FAF - MAPt 7.6 NM								
Cat. of ACFT	A	B	C	D	Speed	kt	80	100	120	140	160	180	
Straight - in	Cat. I	491 (203)	501 (213)	511 (223)	521 (233)	Time	min : s	5 : 41	4 : 33	3 : 47	3 : 15	2 : 51	2 : 32
	LOC	680 (392)	680 (392)	680 (392)	680 (392)	Rate of descent	ft/min	425	531	637	743	849	955
	SDF not available					Final approach distance / altitude (height)							
Circling (OCH AAL)	940 (652)	940 (652)	940 (652)	940 (652)	Distance	7	6	5					
	940 (632)	940 (632)	1160 (852)	1160 (852)	Altitude (height)	2530 (2242)	2210 (1922)	1890 (1602)	1570 (1282)				

INSTRUMENT  
APPROACH  
CHART - ICAOPoznań - Ławica  
ILS or LOC  
RWY 28 (CAT A/B/C/D)

FIX / POINT	LATITUDE	LONGITUDE	FIX FORMATION	
IAF ARBIR	52°11'59.6"N	017°09'17.7"E	138.05° GEO (134° MAG) DVOR LAW	17.97 NM DME LAW
IF	52°19'46.7"N	017°17'37.8"E	287.90° GEO (284° MAG) LOC POZ	17.63 NM DME POZ
PO401	52°22'06.1"N	017°05'49.8"E	287.90° GEO (284° MAG) LOC POZ	10.02 NM DME POZ
FAP (FAF LOC)	52°22'33.6"N	017°03'28.0"E	287.88° GEO (284° MAG) LOC POZ	8.51 NM DME POZ
PO402 (SDF LOC)	52°24'25.1"N	016°53'56.3"E	287.88° GEO (284° MAG) LOC POZ	2.37 NM DME POZ
MAPt (LOC)	52°24'51.4"N	016°51'40.6"E	287.88° GEO (284° MAG) LOC POZ	0.92 NM DME POZ
Final approach descent angle: 3.00°				