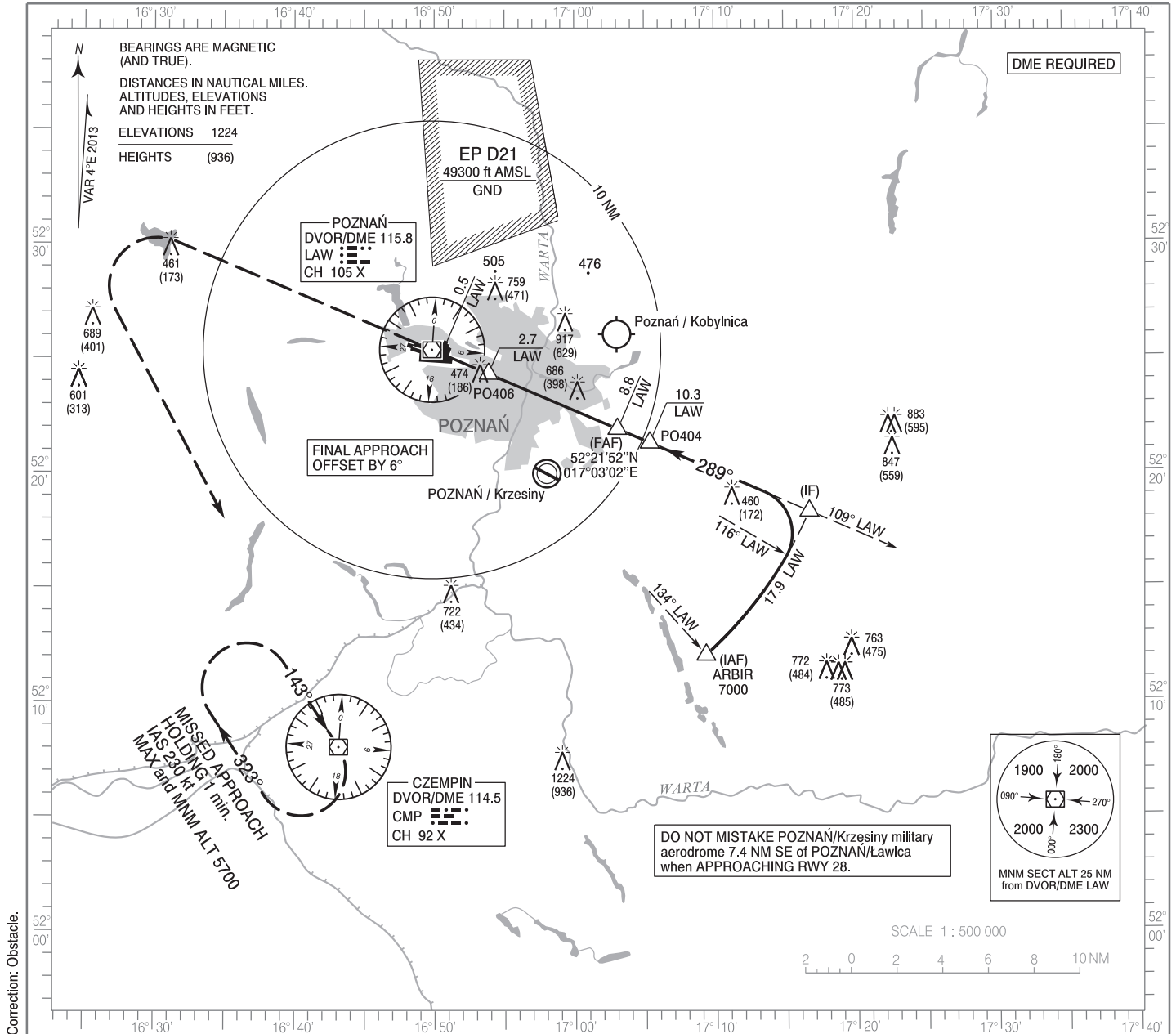


**INSTRUMENT
APPROACH
CHART - ICAO**

AERODROME ELEV 308 ft
THR RWY 28 ELEV 288 ft
HEIGHTS RELATED TO THR RWY 28

Poznań APPROACH 129.025
Poznań TOWER 119.975
ATIS 124.700

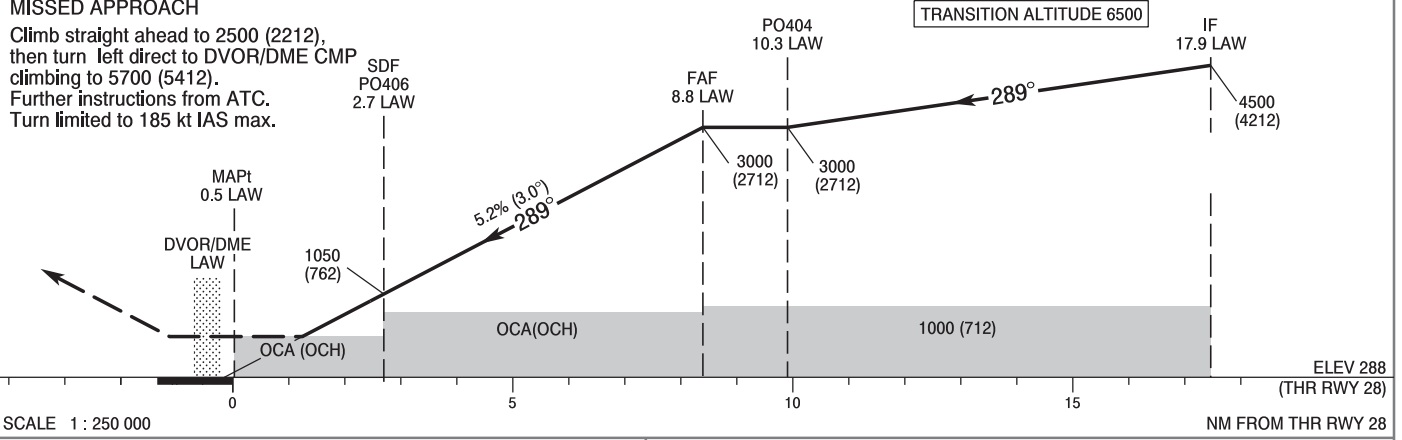
**Poznań - Ławica
VOR
RWY 28 (CAT A/B/C/D)**



Correction: Obstacle.

MISSED APPROACH

Climb straight ahead to 2500 (2212), then turn left direct to DVOR/DME CMP climbing to 5700 (5412). Further instructions from ATC. Turn limited to 185 kt IAS max.



SCALE 1 : 250 000

| OCA (OCH) | | | | | Distance FAF - MAPt 8.4 NM | | | | | | | |
|--------------------|-------------------|-----------|------------|------------|---|-------------|-------------|-------------|-----------|--------|--------|--------|
| Cat. of ACFT | A | B | C | D | Speed | kt | 80 | 100 | 120 | 140 | 160 | 180 |
| Straight - in | 730 (442) | 730 (442) | 730 (442) | 730 (442) | Time | min : s | 6 : 16 | 5 : 01 | 4 : 11 | 3 : 35 | 3 : 08 | 2 : 47 |
| | SDF not available | | | | Rate of descent | ft/min | 425 | 531 | 637 | 743 | 849 | 955 |
| Circling (OCH AAL) | 940 (652) | 940 (652) | 940 (652) | 940 (652) | Final approach distance / altitude (height) | | | | | | | |
| | 940 (632) | 940 (632) | 1160 (852) | 1160 (852) | Distance | 8 | 6 | 4 | 2 | | | |
| | | | | | Altitude (height) | 2740 (2452) | 2110 (1822) | 1470 (1182) | 830 (542) | | | |

**INSTRUMENT
APPROACH
CHART - ICAO**

**Poznań - Ławica
VOR
RWY 28 (CAT A/B/C/D)**

| FIX / POINT | LATITUDE | LONGITUDE | FIX FORMATION | |
|-------------------------------------|--------------|---------------|---------------------------------------|---------------------|
| IAF ARBIR | 52°11'59.6"N | 017°09'17.7"E | 138.05° GEO (134° MAG) DVOR LAW | 17.97 NM DME LAW |
| IF | 52°18'15.1"N | 017°16'40.6"E | 113.14° GEO (109° MAG) DVOR LAW | 17.95 NM DME LAW |
| PO404 | 52°21'16.6"N | 017°05'16.8"E | 113.14° GEO (109° MAG) DVOR LAW | 10.32 NM DME LAW |
| FAF | 52°21'52.2"N | 017°03'02.0"E | 113.14° GEO (109° MAG) DVOR LAW | 8.83 NM DME LAW |
| SDF PO406 | 52°24'17.0"N | 016°53'51.1"E | 113.14° GEO (109° MAG) DVOR LAW | 2.69 NM DME LAW |
| MAPt | 52°25'09.5"N | 016°50'30.8"E | 113.14° GEO (109° MAG) DVOR LAW | 0.77 NM DME LAW |
| Final approach descent angle: 3.00° | | | | |