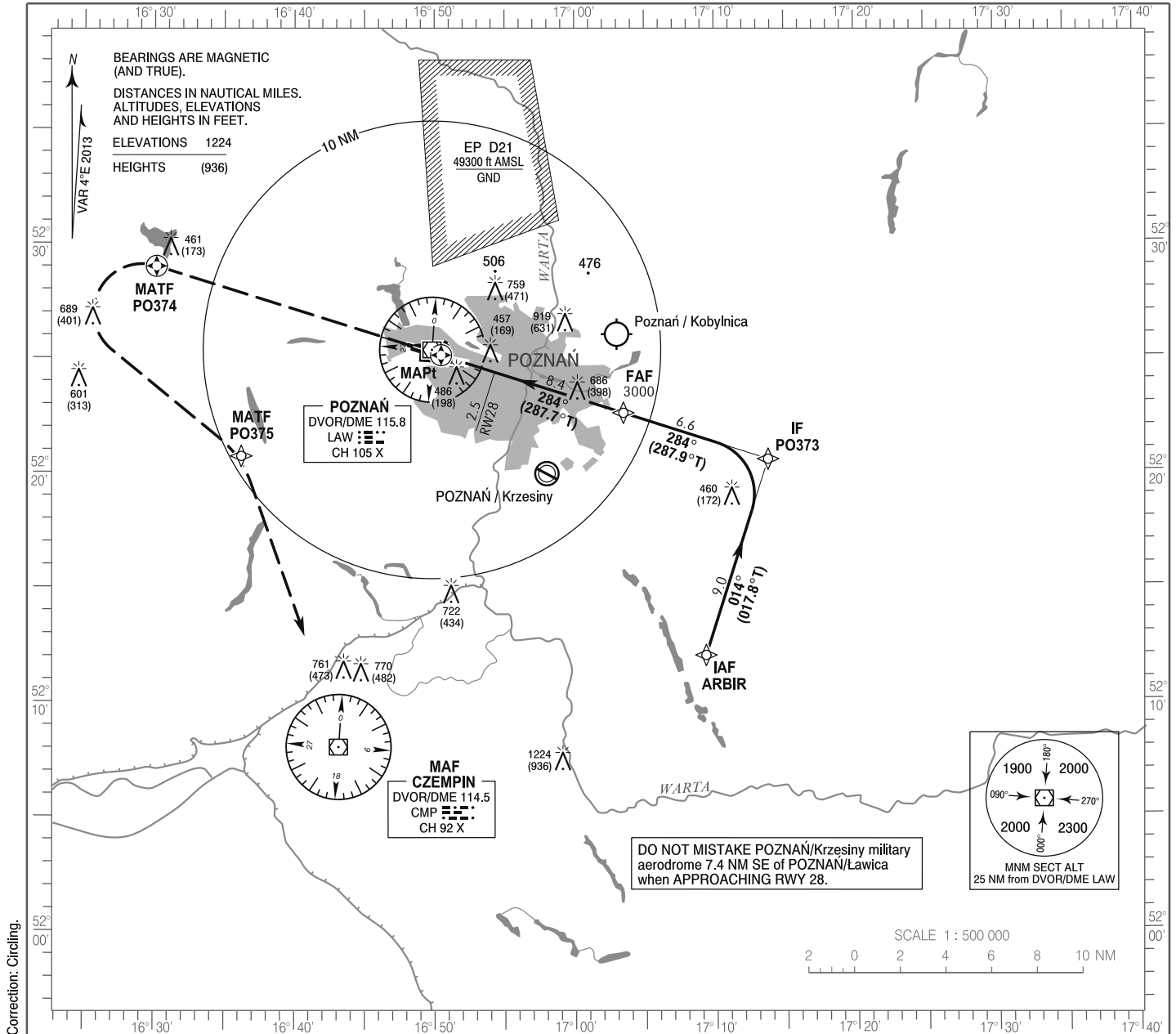


**INSTRUMENT
APPROACH
CHART - ICAO**

AERODROME ELEV 308 ft
THR RWY 28 ELEV 288 ft
HEIGHTS RELATED TO THR RWY 28

Poznań APPROACH 129.025
Poznań TOWER 119.975
ATIS 124.700

**Poznań - Ławica
RNAV (GNSS)
RWY 28 (CAT A/B/C/D)**

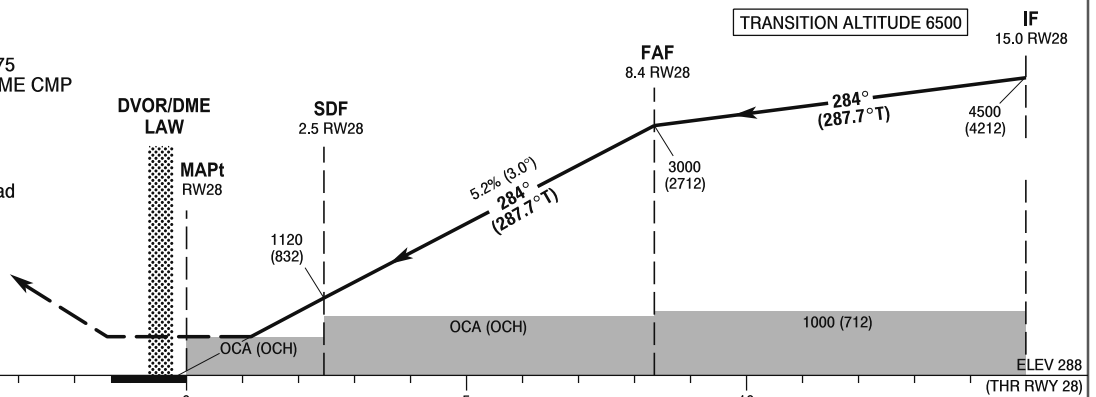


Correction: Circling.

MISSED APPROACH

RNAV: Climb straight ahead to PO374, then turn left to PO375 then turn right direct to DVOR/DME CMP climbing to 5700 (5412). Further instructions from ATC. Turn limited to 185 kt IAS max.

NON-RNAV: Climb straight ahead to PO374 (12.6 NM DME LAW), then turn left direct to DVOR/DME CMP climbing to 5700 (5412). Further instructions from ATC. Turn limited to 185 kt IAS max.



SCALE 1 : 250 000

NM FROM THR RWY 28

OCA (OCH)					Distance FAF - MAPt 8.4								
Cat. of ACFT	A	B	C	D	Speed	kt	80	100	120	140	160	180	
Straight-in	LNAV	760 (472)	760 (472)	760 (472)	760 (472)	Time	min : s	6 : 16	5 : 01	4 : 11	3 : 35	3 : 08	2 : 47
	SDF not available				Rate of descent	ft / min	425	531	637	743	849	955	
Final approach distance/altitude (height)													
Circling (OCH AAL)	940 (632)	940 (632)	1160 (852)	1160 (852)	Distance	8	6	4	2				
					Altitude (height)	2890 (2602)	2250 (1962)	1620 (1332)	980 (692)				