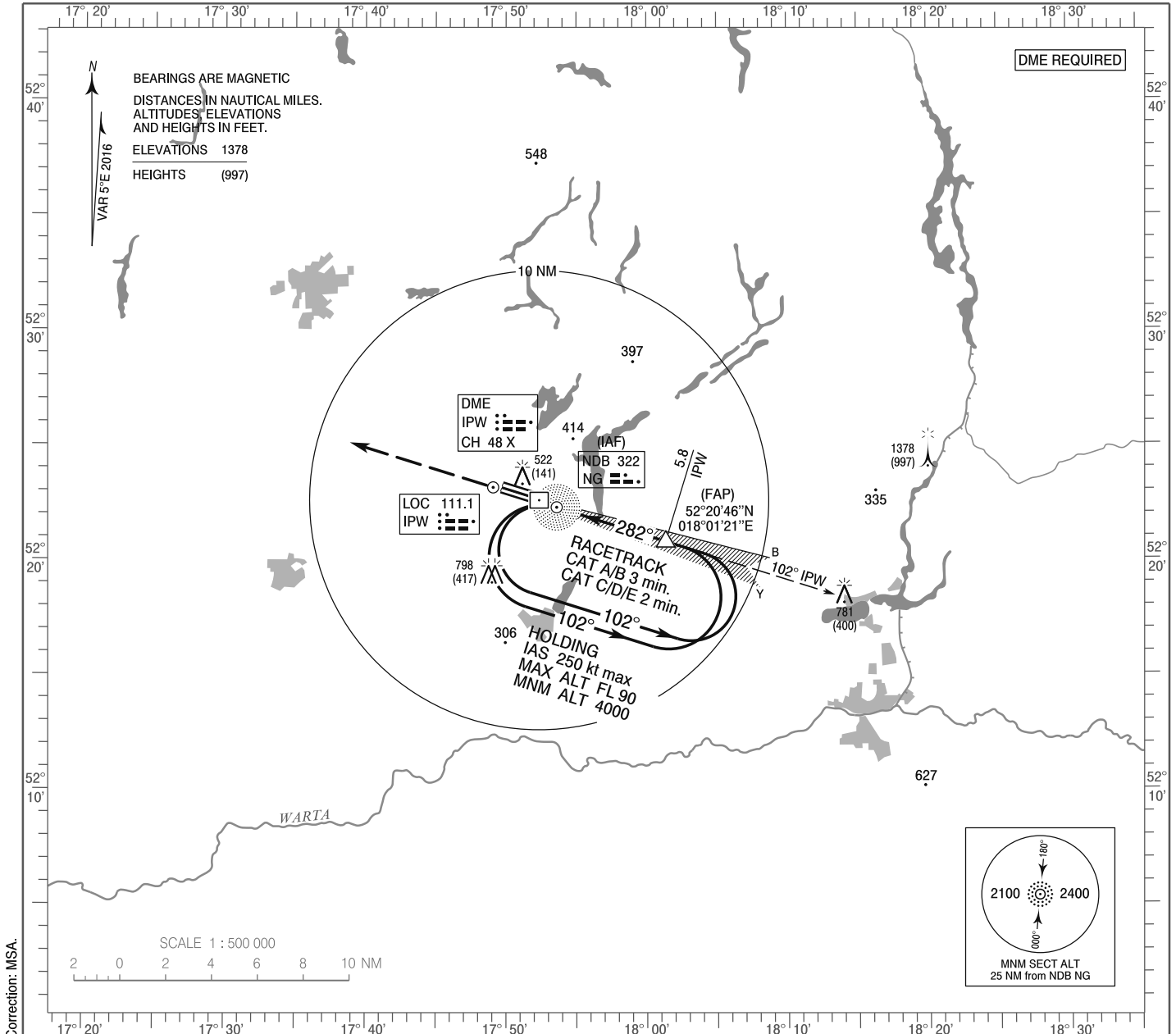


**INSTRUMENT  
APPROACH  
CHART - ICAO**

AERODROME ELEV 384 ft  
THR RWY 28L ELEV 381 ft  
HEIGHTS RELATED TO THR RWY 28L

Powidz APPROACH 129.675  
Powidz TOWER 119.000  
ATIS 279.850

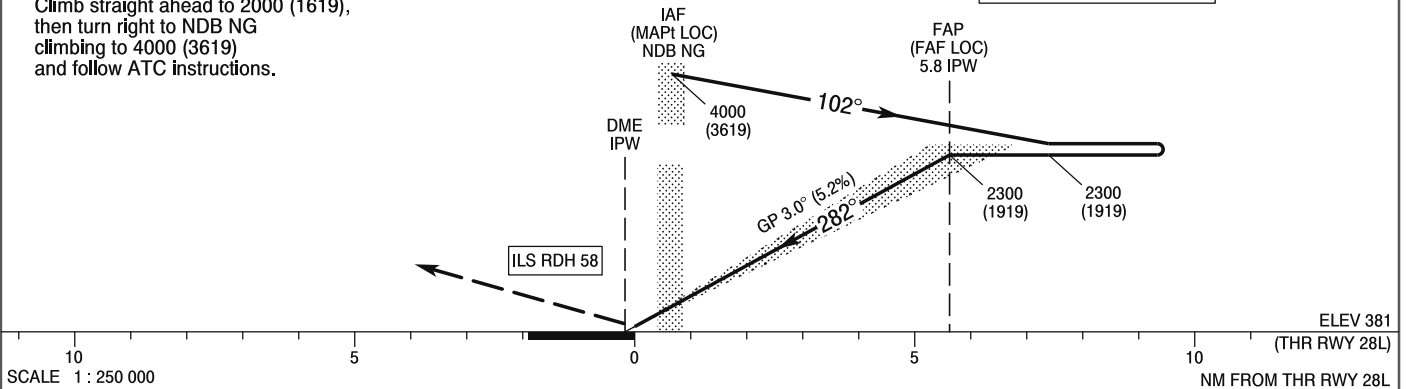
**POWIDZ  
ILS z or LOC z  
RWY 28L (CAT A/B/C/D/E)**



**MISSED APPROACH**

Climb straight ahead to 2000 (1619),  
then turn right to NDB NG  
climbing to 4000 (3619)  
and follow ATC instructions.

TRANSITION ALTITUDE 6500



Cat. of ACFT	OCA (OCH)					Distance FAF - MAPt 5.0 NM								
	A	B	C	D	E	Speed	kt	70	100	135	170	200	230	
Straight-in	Cat. I	631 (250)	641 (260)	651 (270)	661 (280)	671 (290)	Time	min : s	4 : 29	3 : 22	2 : 29	1 : 59	1 : 41	1 : 28
	LOC	761 (380)	761 (380)	761 (380)	761 (380)	761 (380)	Rate of descent	ft / min	410	550	750	930	1100	1300
Circling (OCH AAL)		834 (450)	884 (500)	1214 (830)	1214 (830)	1324 (940)								

**INSTRUMENT  
APPROACH  
CHART - ICAO**

**POWIDZ**  
ILS z or LOC z  
RWY 28L (CAT A/B/C/D/E)

FIX / POINT	LATITUDE	LONGITUDE	FIX FORMATION	
IAF NDB NG	52°22'16.1"N	017°53'36.2"E		
FAP (FAF LOC)	52°20'46.2"N	018°01'20.6"E	287.49° GEO (282° MAG) LOC IPW	5.80 NM DME IPW
MAPt (LOC) NDB NG	52°22'16.1"N	017°53'36.2"E		
Final approach descent angle: 3.00°				