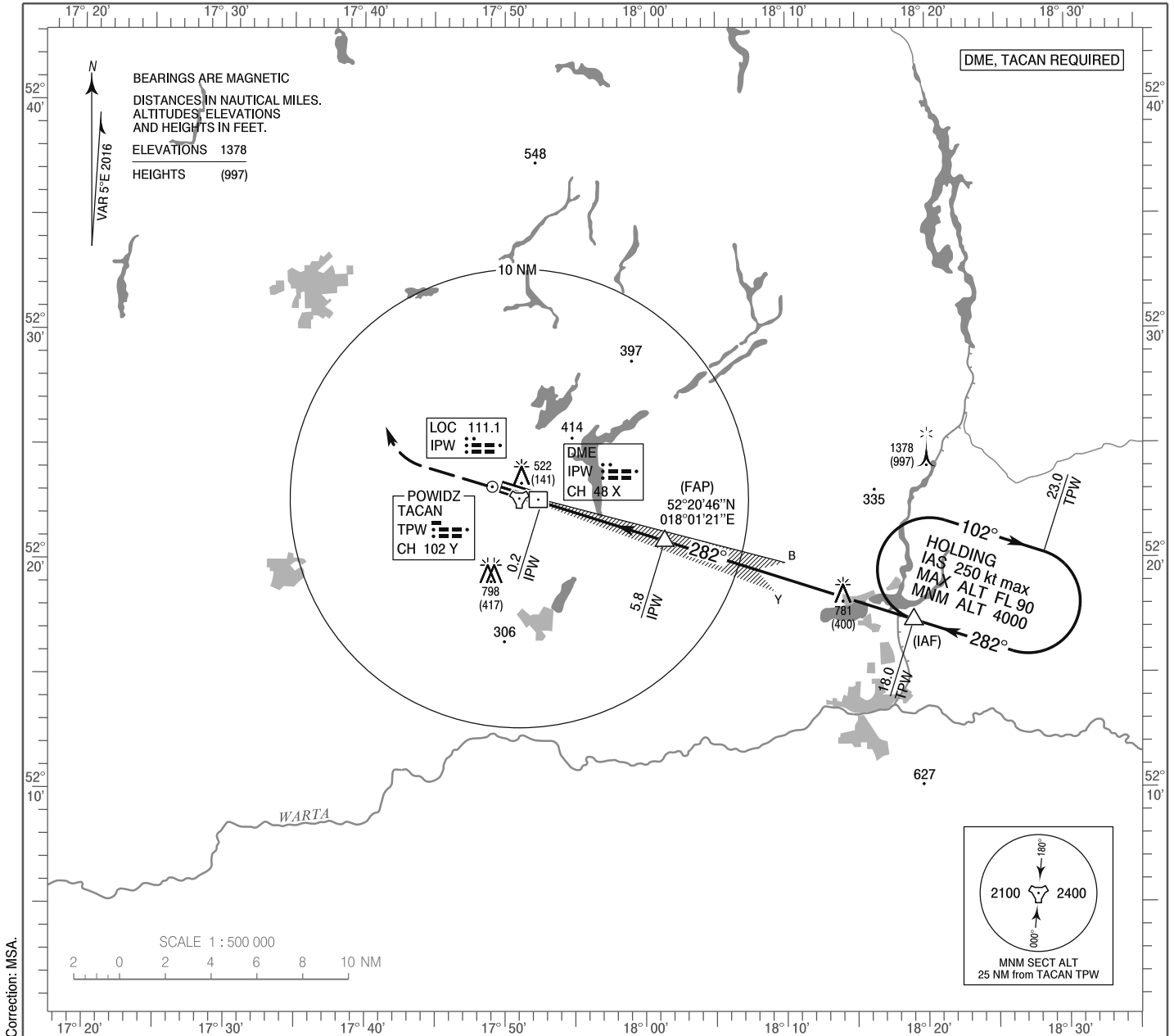


**INSTRUMENT
APPROACH
CHART - ICAO**

AERODROME ELEV 384 ft
THR RWY 28L ELEV 381 ft
HEIGHTS RELATED TO THR RWY 28L

Powidz APPROACH 129.675
Powidz TOWER 119.000
ATIS 279.850

**POWIDZ
ILS y or LOC y
RWY 28L (CAT A/B/C/D/E)**

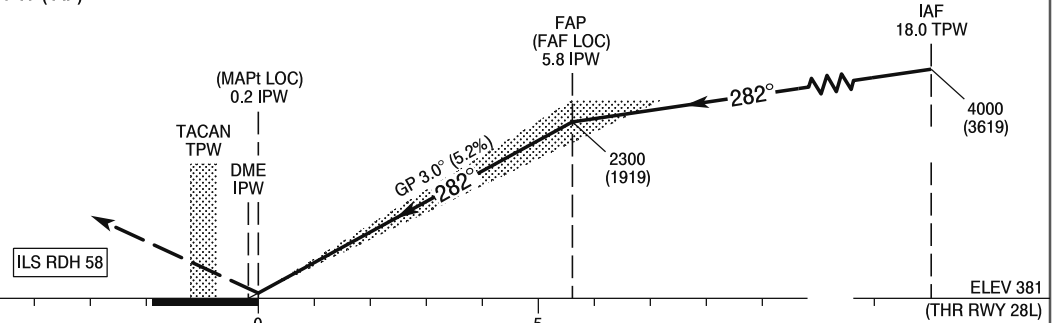


Correction: MSA.

MISSED APPROACH

Climb straight ahead to 2000 (1619),
then turn right to 18.0 NM TACAN TPW (IAF)
climbing to 4000 (3619)
and follow ATC instructions.

TRANSITION ALTITUDE 6500



SCALE 1 : 250 000

NM FROM THR RWY 28L

OCA (OCH)						Distance FAF - MAPt 5.6 NM								
Cat. of ACFT	A	B	C	D	E	Speed	kt	70	100	135	170	200	230	
Straight - in	Cat. I	631 (250)	641 (260)	651 (270)	661 (280)	671 (290)	Time	min : s	4 : 48	3 : 32	2 : 30	2 : 00	1 : 41	1 : 28
	LOC	761 (380)	761 (380)	761 (380)	761 (380)	761 (380)	Rate of descent	ft / min	410	550	750	930	1100	1300
Circling (OCH AAL)		834 (450)	884 (500)	1214 (830)	1214 (830)	1324 (940)								

**INSTRUMENT
APPROACH
CHART - ICAO**

POWIDZ
ILS y or LOC y
RWY 28L (CAT A/B/C/D/E)

FIX / POINT	LATITUDE	LONGITUDE	FIX FORMATION	
IAF	52°17'18.8"N	018°19'02.6"E	106.98° GEO (102° MAG) TACAN TPW	18.00 NM TACAN TPW
FAP (FAF LOC)	52°20'46.2"N	018°01'20.6"E	287.49° GEO (282° MAG) LOC IPW	5.80 NM DME IPW
MAPt (LOC)	52°22'27.8"N	017°52'35.2"E	287.49° GEO (282° MAG) LOC IPW	0.18 NM DME IPW
Final approach descent angle: 3.00°				