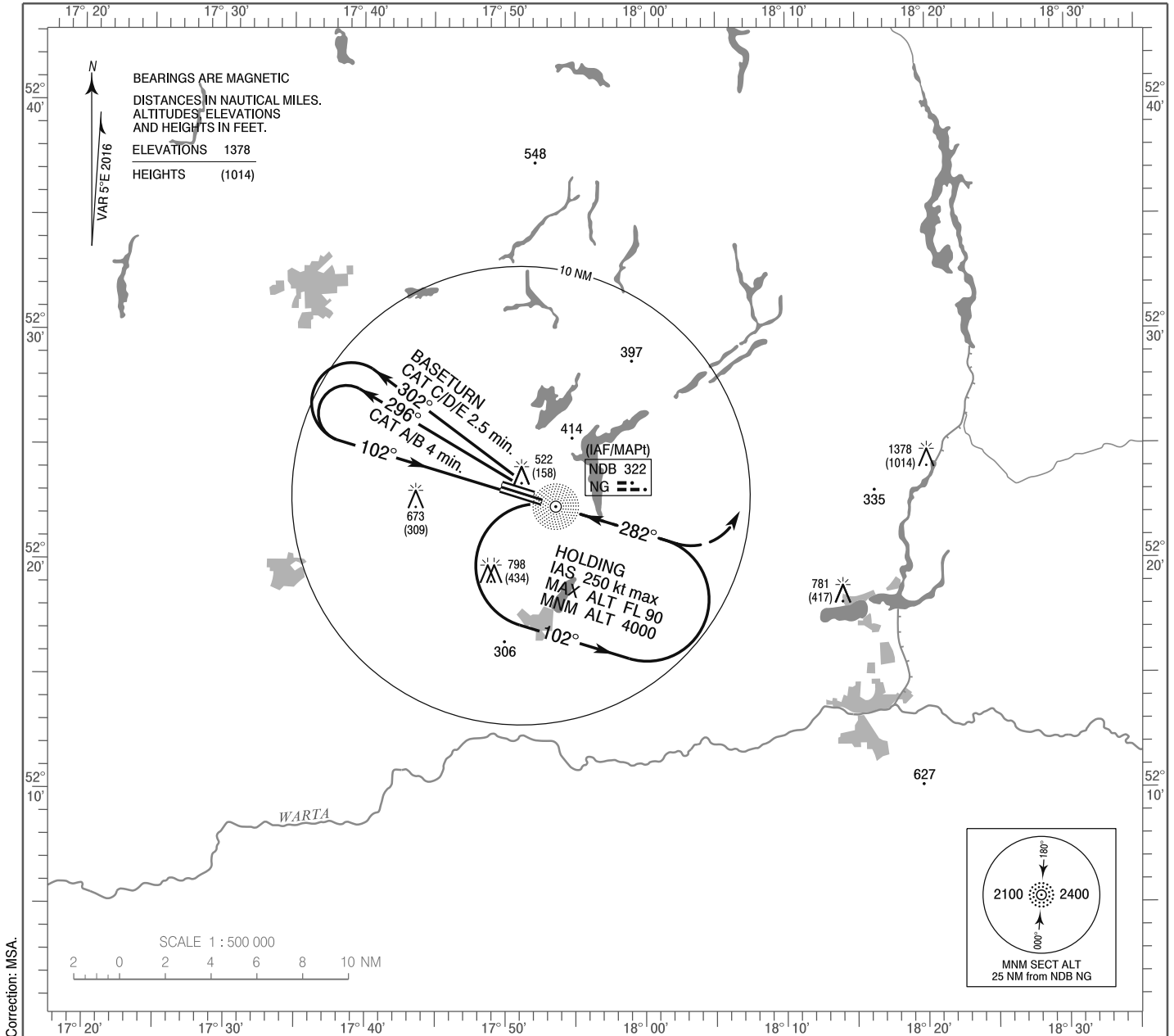


**INSTRUMENT
APPROACH
CHART - ICAO**

AERODROME ELEV 384 ft
THR RWY 10R ELEV 364 ft
HEIGHTS RELATED TO THR RWY 10R

Powidz APPROACH 129.675
Powidz TOWER 119.000
ATIS 279.850

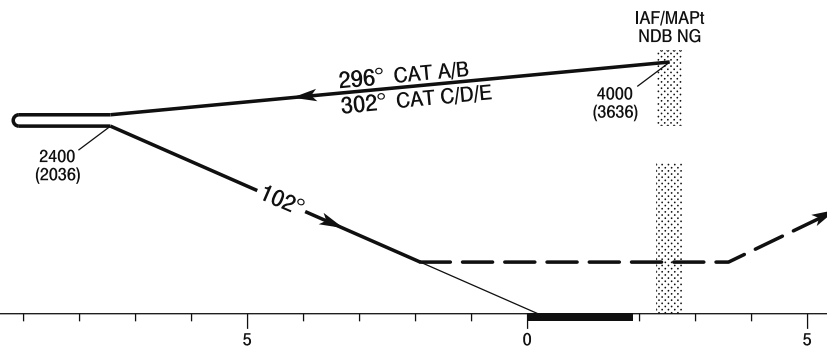
**POWIDZ
NDB
RWY 10R (CAT A/B/C/D/E)**



Correction: MSA.

TRANSITION ALTITUDE 6500

MISSED APPROACH
Climb straight ahead to 2000 (1636)
then turn left to NDB NG
climbing to 4000 (3636)
and follow ATC instructions.



ELEV 364
(THR RWY 10R)

SCALE 1 : 250 000

NM FROM THR RWY 10R

		OCA (OCH)										
Cat. of ACFT		A	B	C	D	E						
Straight - in		924 (560)	924 (560)	924 (560)	924 (560)	924 (560)						
Circling (OCH AAL)		944 (560)	944 (560)	1214 (830)	1214 (830)	1324 (940)						

**INSTRUMENT
APPROACH
CHART - ICAO**

**POWIDZ
NDB
RWY 10R (CAT A/B/C/D/E)**

FIX / POINT	LATITUDE	LONGITUDE	FIX FORMATION	
IAF NDB NG	52°22'16.1"N	017°53'36.2"E		
MAPt NDB NG	52°22'16.1"N	017°53'36.2"E		