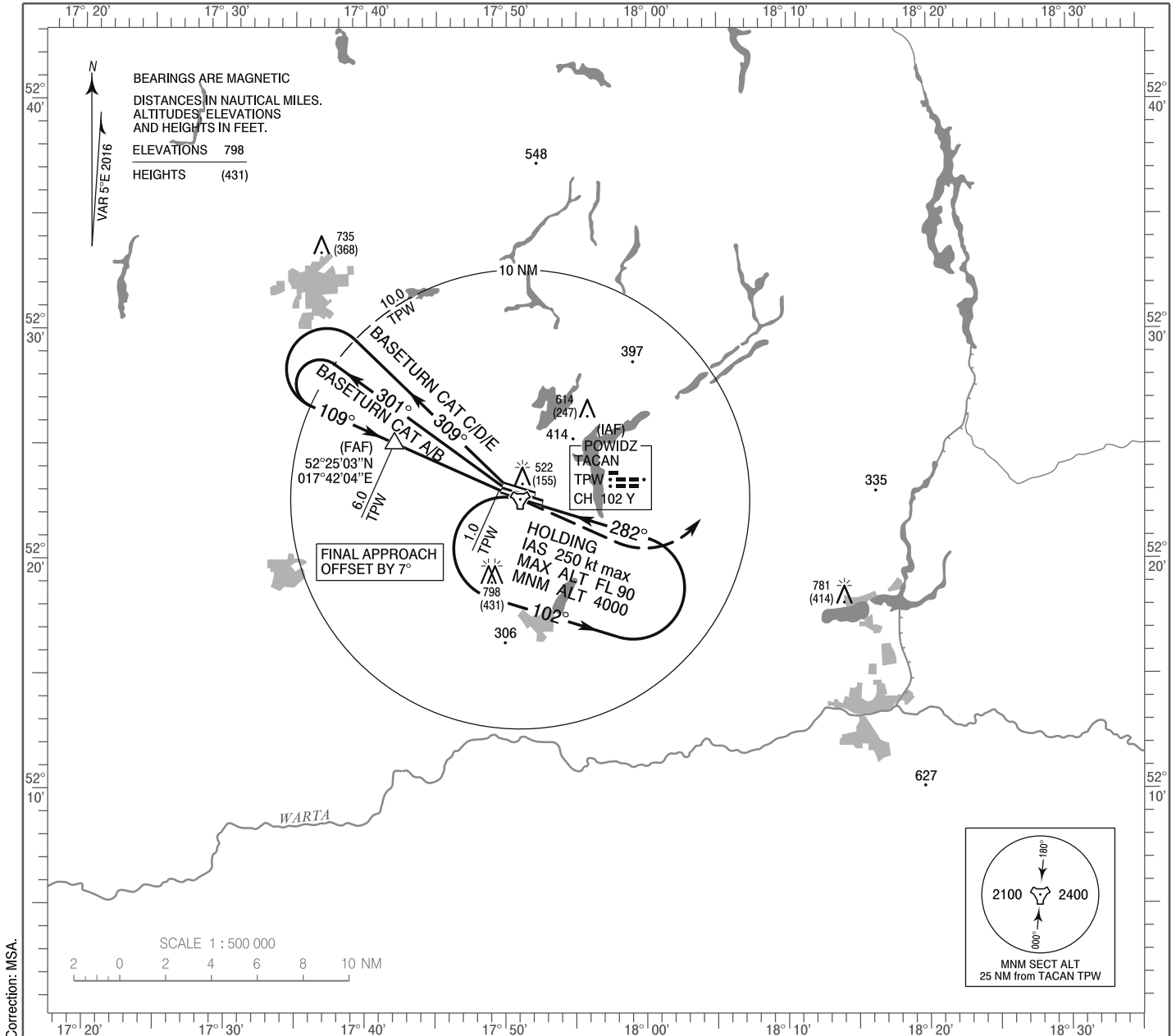


**INSTRUMENT
APPROACH
CHART - ICAO**

AERODROME ELEV 384 ft
THR RWY 10L ELEV 367 ft
HEIGHTS RELATED TO THR RWY 10L

Powidz APPROACH 129.675
Powidz TOWER 119.000
ATIS 279.850

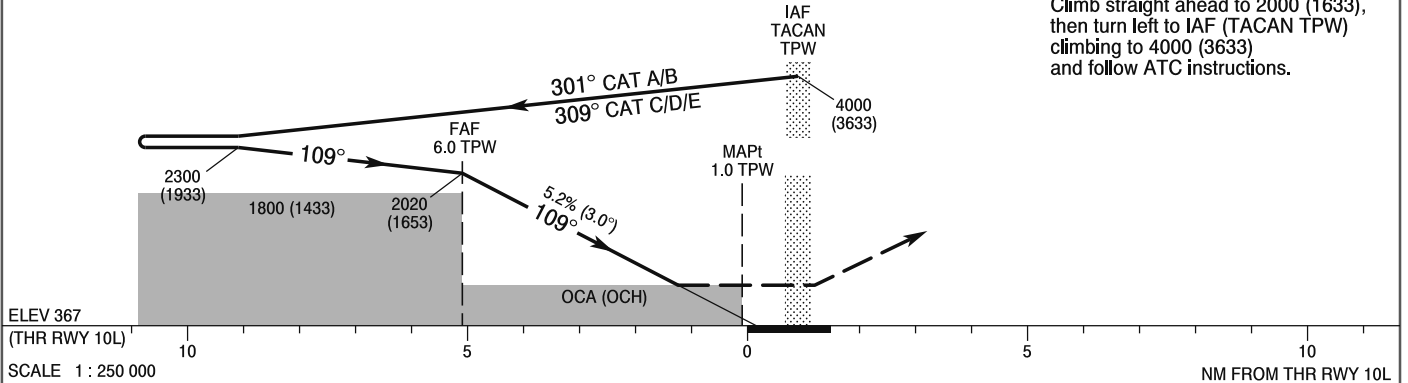
**POWIDZ
TACAN
RWY 10L (CAT A/B/C/D/E)**



Correction: MSA.

TRANSITION ALTITUDE 6500

MISSED APPROACH
Climb straight ahead to 2000 (1633), then turn left to IAF (TACAN TPW) climbing to 4000 (3633) and follow ATC instructions.



OCA (OCH)						Distance FAF - MAPt 5.0 NM							
Cat. of ACFT	A	B	C	D	E	Speed	kt	70	100	135	170	200	230
Straight-in	807 (440)	807 (440)	807 (440)	807 (440)	847 (480)	Time	min : s	3 : 59	2 : 59	2 : 13	1 : 45	1 : 29	1 : 18
						Rate of descent	ft / min	395	530	715	900	1060	1220
Circling (OCH AAL)	834 (450)	884 (500)	1214 (830)	1214 (830)	1324 (940)								

**INSTRUMENT
APPROACH
CHART - ICAO**

**POWIDZ
TACAN
RWY 10L (CAT A/B/C/D/E)**

FIX / POINT	LATITUDE	LONGITUDE	FIX FORMATION	
IAF TACAN TPW	55°22'37.3"N	017°51'00.6"E		
FAF	52°25'03.0"N	017°42'04.0"E	293.99° GEO (289° MAG) TACAN TPW	6.00 NM TACAN TPW
MAPt	52°23'01.6"N	017°49'31.1"E	294.00° GEO (289° MAG) TACAN TPW	1.00 NM TACAN TPW
Final approach descent angle: 3.00°				