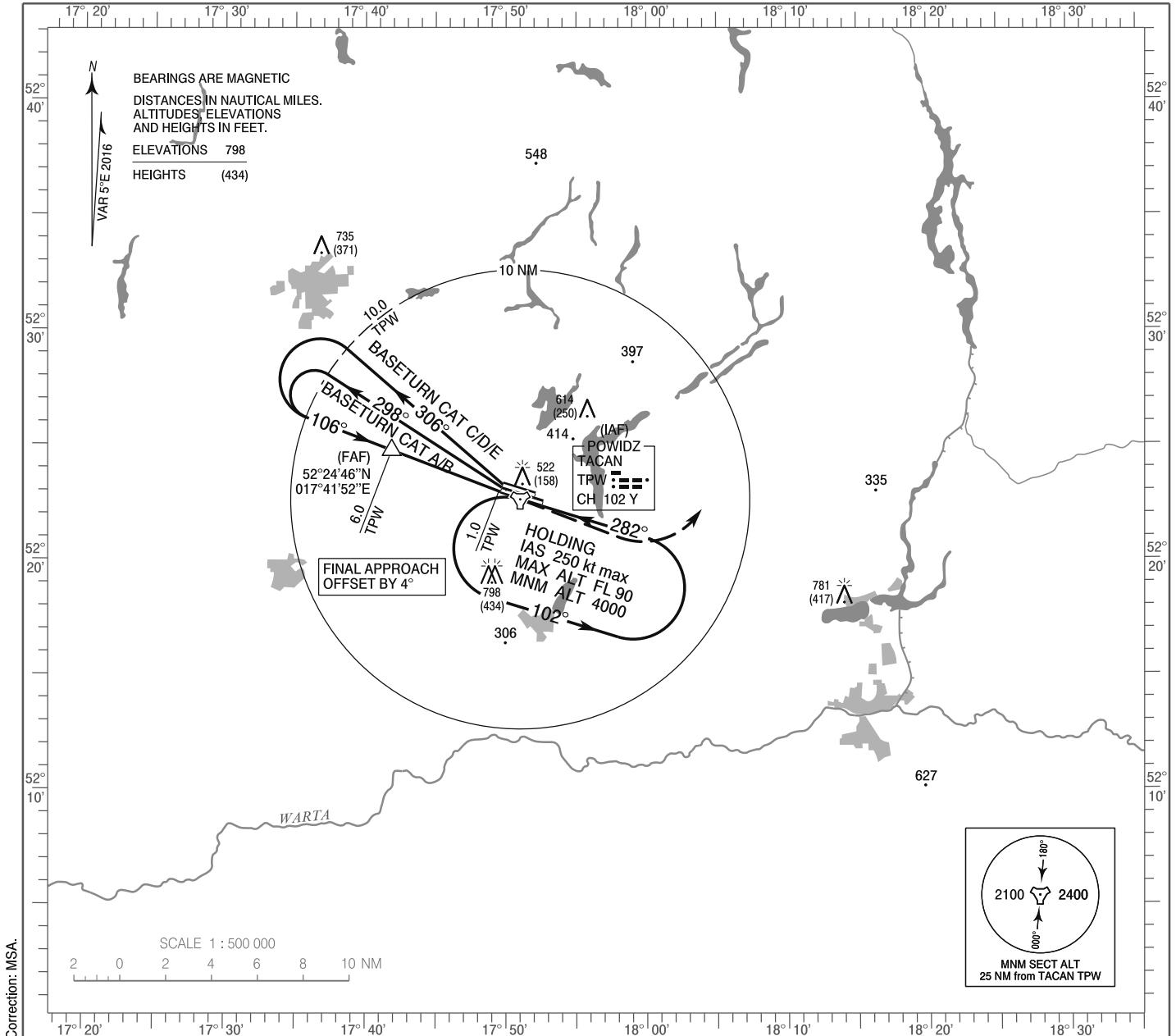


**INSTRUMENT
APPROACH
CHART - ICAO**

AERODROME ELEV 384 ft
THR RWY 10R ELEV 364 ft
HEIGHTS RELATED TO THR RWY 10R

Powidz APPROACH 129.675
Powidz TOWER 119.000
ATIS 279.850

**POWIDZ
TACAN
RWY 10R (CAT A/B/C/D/E)**

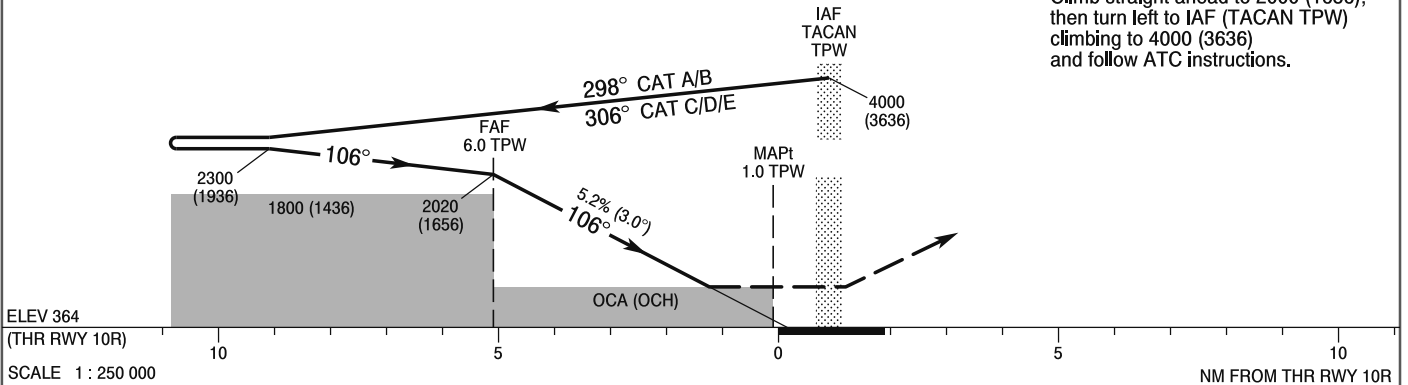


Correction: MSA.

TRANSITION ALTITUDE 6500

MISSED APPROACH

Climb straight ahead to 2000 (1636), then turn left to IAF (TACAN TPW) climbing to 4000 (3636) and follow ATC instructions.



ELEV 364
(THR RWY 10R)

SCALE 1 : 250 000

NM FROM THR RWY 10R

Cat. of ACFT	OCA (OCH)					Distance FAF - MAPt 5.0 NM							
	A	B	C	D	E	Speed	kt	70	100	135	170	200	230
Straight - in	804 (440)	804 (440)	804 (440)	804 (440)	804 (440)	Time	min : s	3 : 59	2 : 59	2 : 13	1 : 45	1 : 29	1 : 18
						Rate of descent	ft / min	395	530	715	900	1060	1220
Circling (OCH AAL)	834 (450)	884 (500)	1214 (830)	1214 (830)	1324 (940)								

**INSTRUMENT
APPROACH
CHART - ICAO**

**POWIDZ
TACAN
RWY 10R (CAT A/B/C/D/E)**

FIX / POINT	LATITUDE	LONGITUDE	FIX FORMATION	
IAF TACAN TPW	55°22'37.3"N	017°51'00.6"E		
FAF	52°24'46.0"N	017°41'52.0"E	291.04° GEO (286° MAG) TACAN TPW	6.00 NM TACAN TPW
MAPt	52°22'58.7"N	017°49'29.2"E	290.99° GEO (286° MAG) TACAN TPW	1.00 NM TACAN TPW
Final approach descent angle: 3.00°				