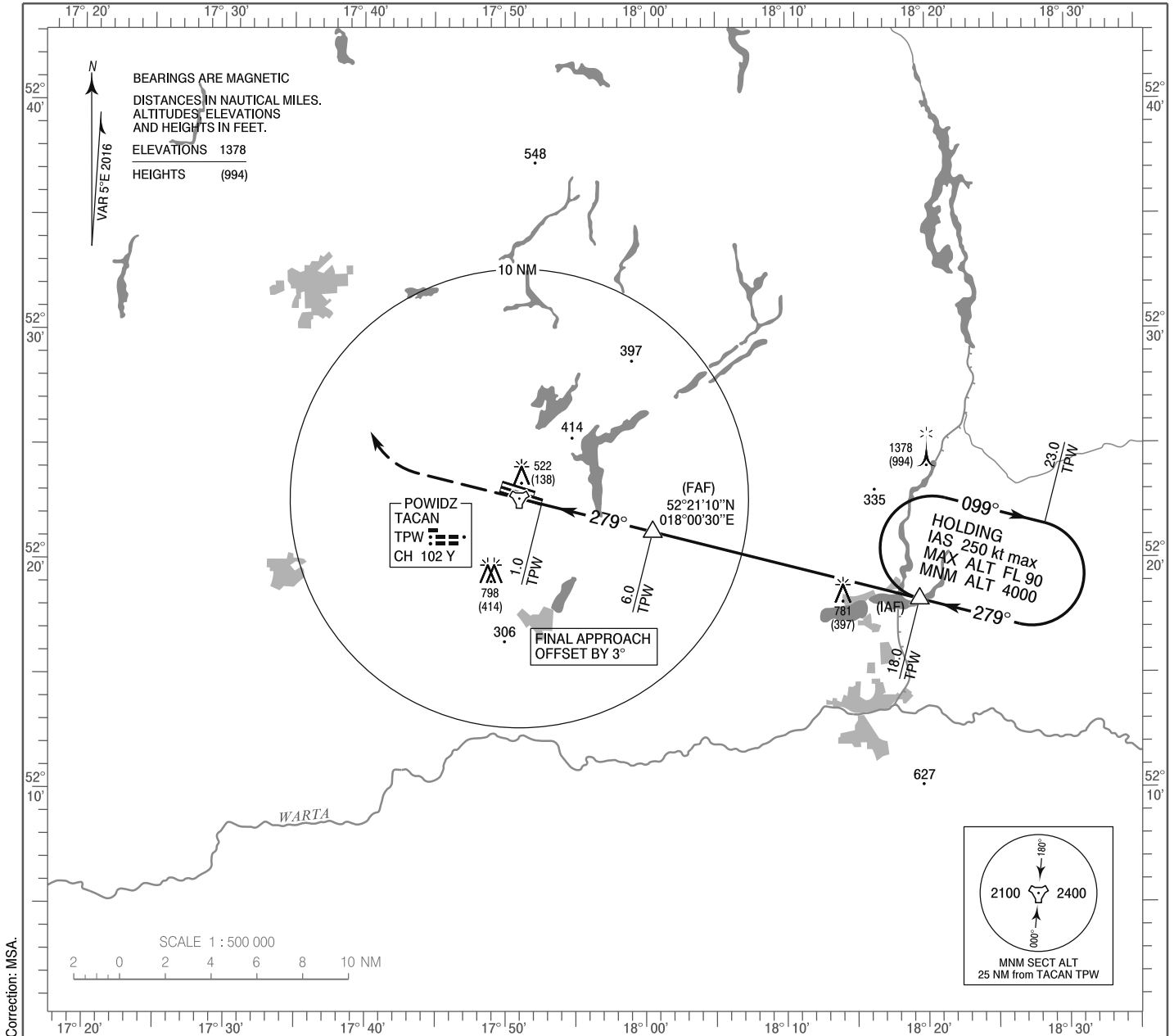


**INSTRUMENT
APPROACH
CHART - ICAO**

AERODROME ELEV 384 ft
THR RWY 28L ELEV 381 ft
HEIGHTS RELATED TO AD ELEV

Powidz APPROACH 129.675
Powidz TOWER 119.000
ATIS 279.850

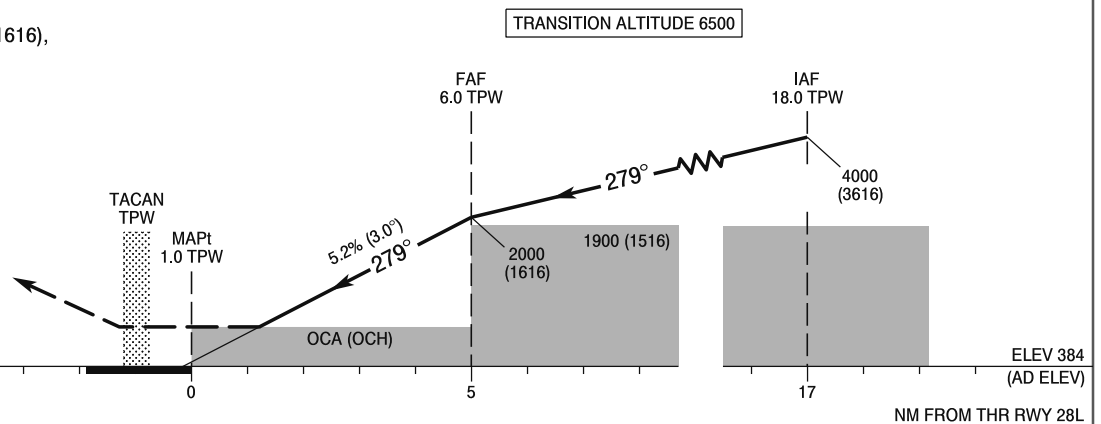
**POWIDZ
TACAN
RWY 28L (CAT A/B/C/D/E)**



Correction: MSA.

MISSED APPROACH

Climb straight ahead to 2000 (1616),
then turn right to IAF
climbing to 4000 (3616)
and follow ATC instructions.
No turn before MAPt.



SCALE 1 : 250 000

NM FROM THR RWY 28L

Cat. of ACFT	OCA (OCH)					Distance FAF - MAPt 5.0 NM							
	A	B	C	D	E	Speed	kt	70	100	135	170	200	230
Straight - in	814 (430)	814 (430)	814 (430)	814 (430)	814 (430)	Time	min : s	3 : 59	2 : 59	2 : 13	1 : 45	1 : 29	1 : 18
						Rate of descent	ft / min	395	530	715	900	1060	1220
Circling	834 (450)	884 (500)	1214 (830)	1214 (830)	1324 (940)								

**INSTRUMENT
APPROACH
CHART - ICAO**

POWIDZ
TACAN
RWY 28L (CAT A/B/C/D/E)

FIX / POINT	LATITUDE	LONGITUDE	FIX FORMATION	
IAF	52°18'12.9"N	018°19'27.7"E	104.00° GEO (099° MAG) TACAN TPW	18.00 NM TACAN TPW
FAF	52°21'09.9"N	018°00'30.2"E	104.00° GEO (099° MAG) TACAN TPW	6.00 NM TACAN TPW
MAPt	52°22'22.7"N	017°52'35.5"E	104.00° GEO (099° MAG) TACAN TPW	1.00 NM TACAN TPW
Final approach descent angle: 3.00°				