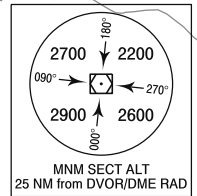
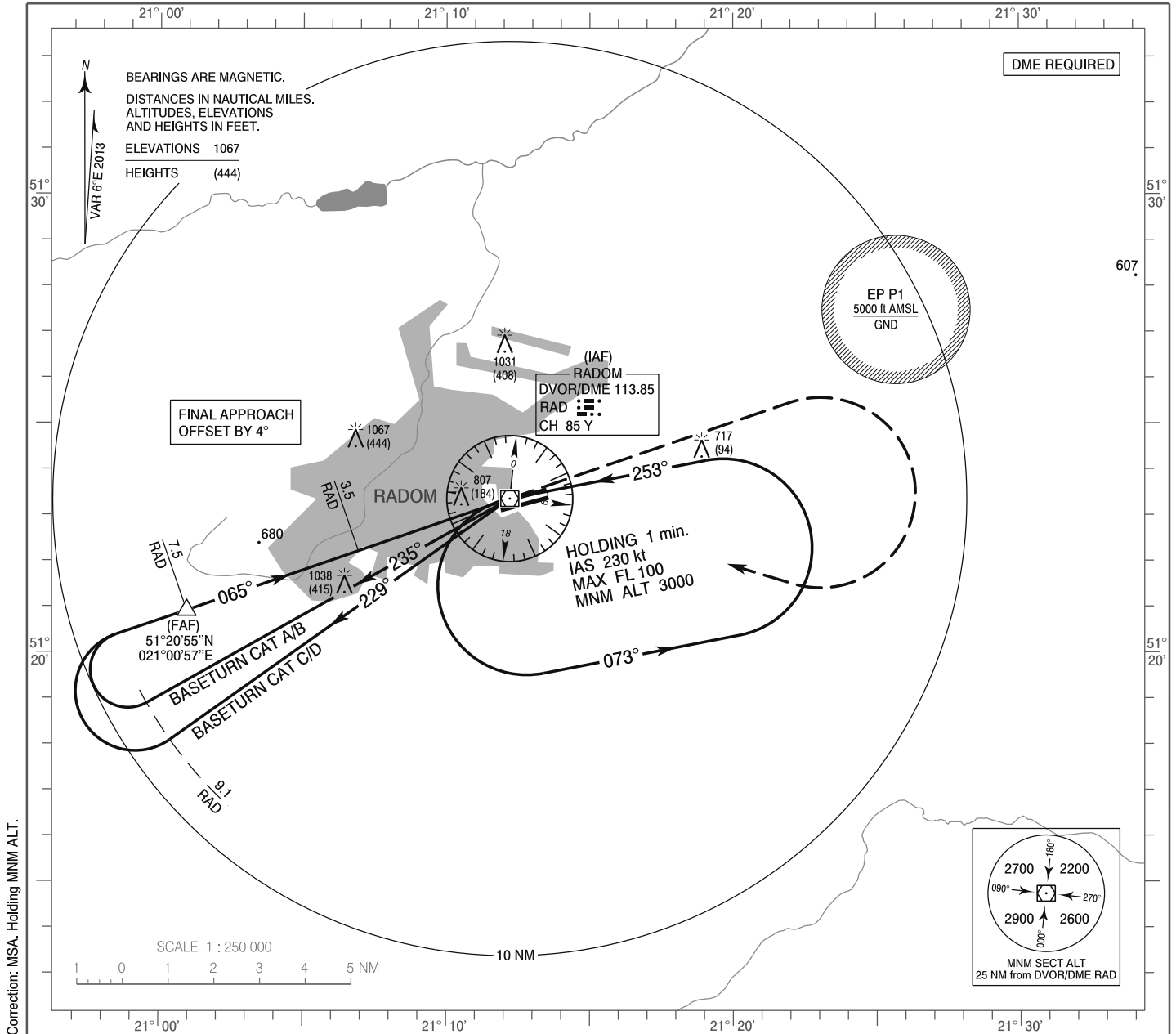


**INSTRUMENT
APPROACH
CHART - ICAO**

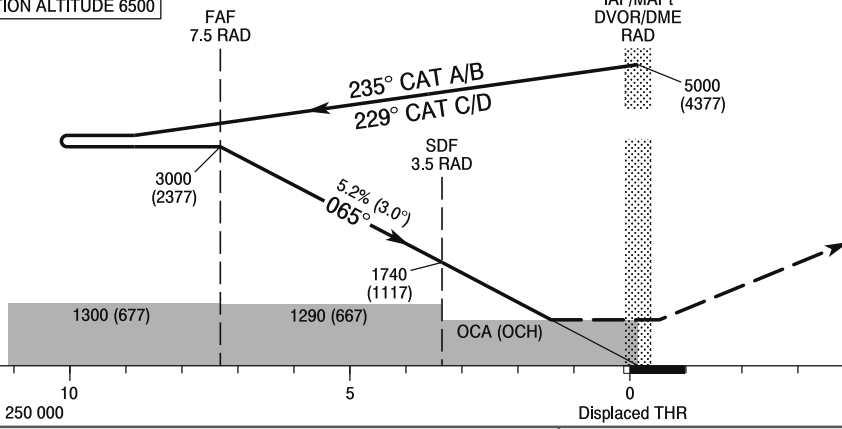
AERODROME ELEV 623 ft
THR RWY 07 ELEV 618 ft
HEIGHTS RELATED TO AD ELEV

Radom TOWER 122.050
Radom INFORMATION 122.050

**Radom - Sadków
VOR
RWY 07 (CAT A/B/C/D)**



TRANSITION ALTITUDE 6500



Cat. of ACFT	OCA (OCH)				Distance FAF - MAPt 7.5 NM							
	A	B	C	D	Speed	kt	80	100	120	140	160	180
Straight - in	1060 (437)	1060 (437)	1060 (437)	1060 (437)	Time	min : s	5 : 36	4 : 29	3 : 44	3 : 12	2 : 48	2 : 29
	When stepdown fix not received				Rate of descent	ft / min	430	540	640	750	850	960
	1290 (667)	1290 (667)	1290 (667)	1290 (667)	Final approach distance/altitude (height)							
Circling*	1110 (487)	1120 (497)	1470 (847)	1470 (847)	Distance		7	5	3			
*Circling south of aerodrome only.					Altitude (height)		2850 (2227)	2220 (1597)	1580 (957)			

**INSTRUMENT
APPROACH
CHART - ICAO**

**Radom - Sadków
VOR
RWY 07 (CAT A/B/C/D)**

FIX / POINT	LATITUDE	LONGITUDE	FIX FORMATION	
IAF DVOR/DME RAD	51°23'21.8"N	021°12'13.5"E		
FAF	51°20'55.3"N	021°00'56.8"E	251.00° GEO (245° MAG) DVOR RAD	7.48 NM DME RAD
SDF	51°22'13.2"N	021°06'55.9"E	251.00° GEO (245° MAG) DVOR RAD	3.50 NM DME RAD
MAPt DVOR/DME RAD	51°23'21.8"N	021°12'13.5"E		
Final approach descent angle: 3.00°				