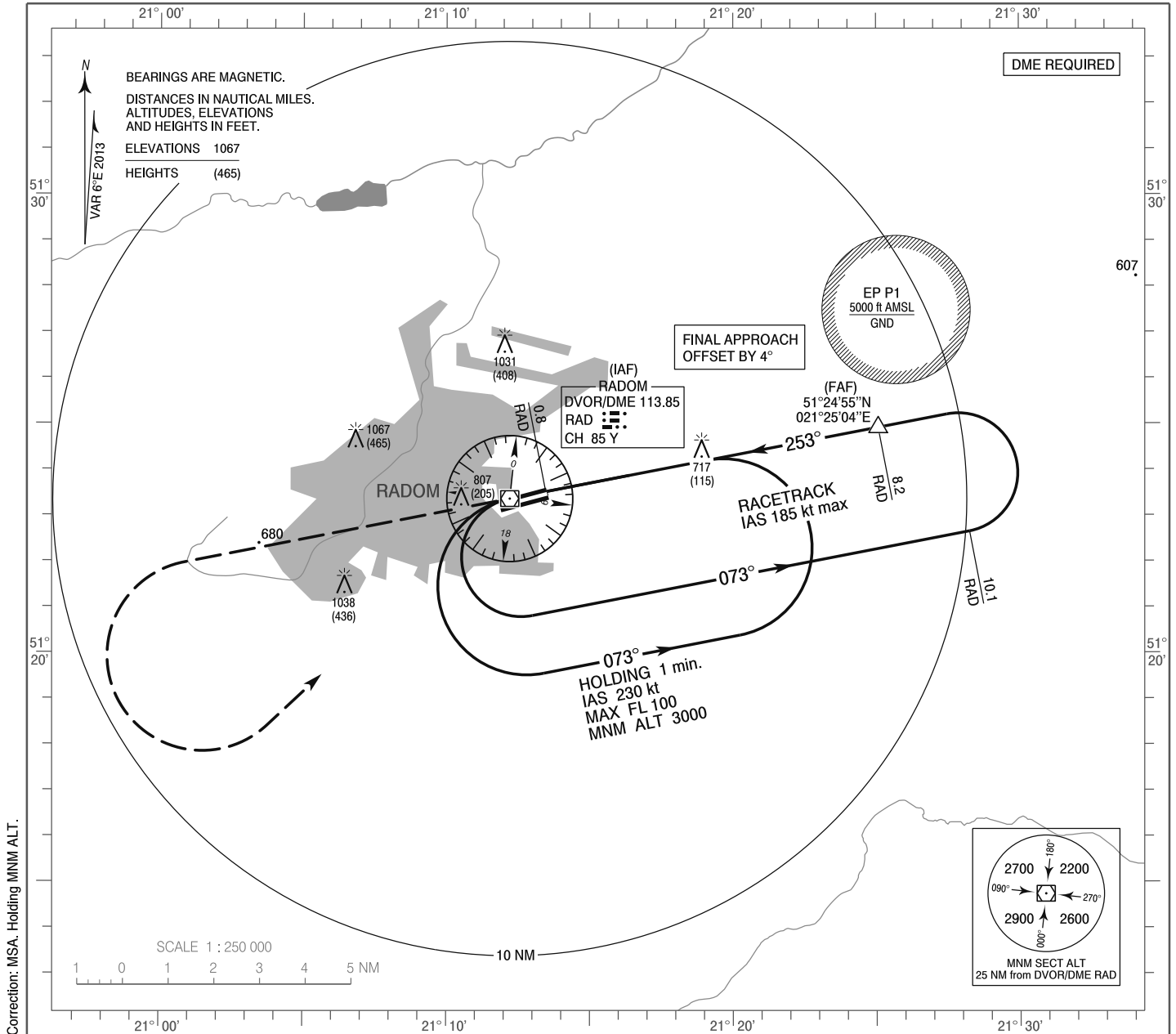


**INSTRUMENT
APPROACH
CHART - ICAO**

AERODROME ELEV 623 ft
THR RWY 25 ELEV 602 ft
HEIGHTS RELATED TO THR RWY 25

Radom TOWER 122.050
Radom INFORMATION 122.050

**Radom - Sadków
VOR
RWY 25 (CAT A/B/C/D)**

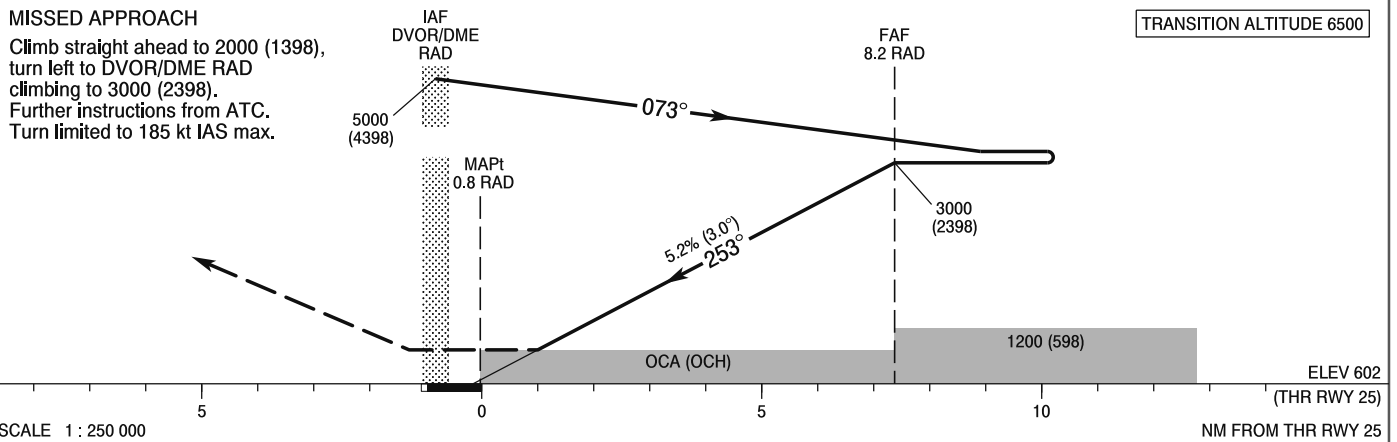


Correction: MSA. Holding MNM ALT.

MISSED APPROACH

Climb straight ahead to 2000 (1398),
turn left to DVOR/DME RAD
climbing to 3000 (2398).
Further instructions from ATC.
Turn limited to 185 kt IAS max.

TRANSITION ALTITUDE 6500



SCALE 1 : 250 000

NM FROM THR RWY 25

OCA (OCH)					Distance FAF - MAPt 7.4 NM							
Cat. of ACFT	A	B	C	D	Speed	kt	80	100	120	140	160	180
	Straight - in	970 (368)	970 (368)	970 (368)	970 (368)	Time	min : s	5 : 32	4 : 25	3 : 41	3 : 09	2 : 46
					Rate of descent	ft / min	430	540	640	750	850	960
Circling (OCH AAL)*					Final approach distance/altitude (height)							
					Distance		7	5	3			
					Altitude (height)		2620 (2018)	1980 (1378)	1350 (748)			

*Circling south of aerodrome only.

**INSTRUMENT
APPROACH
CHART - ICAO**

**Radom - Sadków
VOR
RWY 25 (CAT A/B/C/D)**

FIX / POINT	LATITUDE	LONGITUDE	FIX FORMATION	
IAF DVOR/DME RAD	51°23'21.8"N	021°12'13.5"E		
FAF	51°24'55.0"N	021°25'03.9"E	078.98° GEO (073° MAG) DVOR RAD	8.20 NM DME RAD
MAPt	51°23'31.2"N	021°13'30.8"E	078.98° GEO (073° MAG) DVOR RAD	0.82 NM DME RAD
Final approach descent angle: 3.00°				