

**INSTRUMENT
APPROACH
CHART - ICAO**

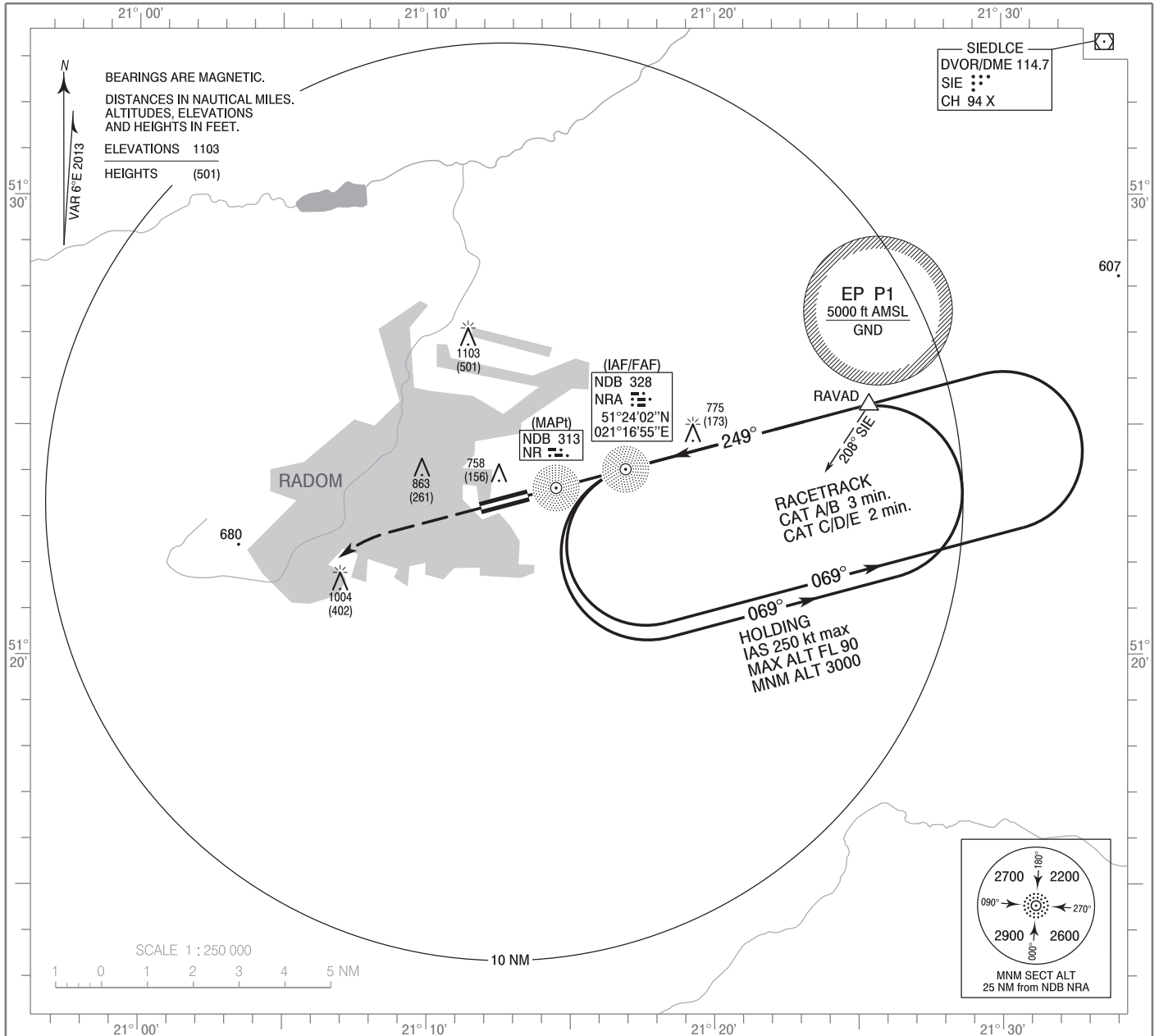
AERODROME ELEV 623 ft
THR RWY 25 ELEV 602 ft
HEIGHTS RELATED TO THR RWY 25

Radom PRECISION	129.000
Radom APPROACH	128.675
Radom TOWER	119.150
CIV Radom TOWER	122.050

**Radom - Sadków
NDB**

MILITARY USE ONLY

RWY 25 (CAT A/B/C/D/E)

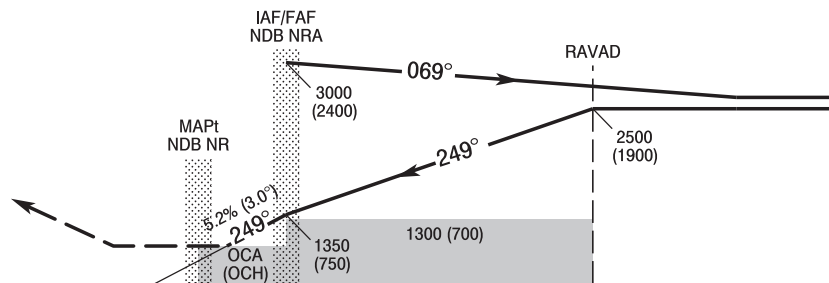


Correction: MSA. Frequency.

MISSED APPROACH

Climb straight ahead to 1700 (1100),
then turn left to NDB NRA
climbing to 3000 (2400)
and follow ATC instructions.

TRANSITION ALTITUDE 6500



ELEV 602
(THR RWY 25)

SCALE 1 : 250 000

NM FROM THR RWY 25

Cat. of ACFT	OCA (OCH)					Speed	kt	Distance FAF - MAPt 1.6 NM						
	A	B	C	D	E			70	100	135	170	200	230	
Straight - in		1012 (410)	1012 (410)	1012 (410)	1012 (410)	1012 (410)	Time	min : s	1 : 21	0 : 56	0 : 42	0 : 33	0 : 28	0 : 25
							Rate of descent	ft / min	370	530	720	900	1060	1220
Circling* (OCH AAL)	1173 (550)	1173 (550)	1503 (880)	1503 (880)	1603 (980)									

*Circling south of aerodrome only.