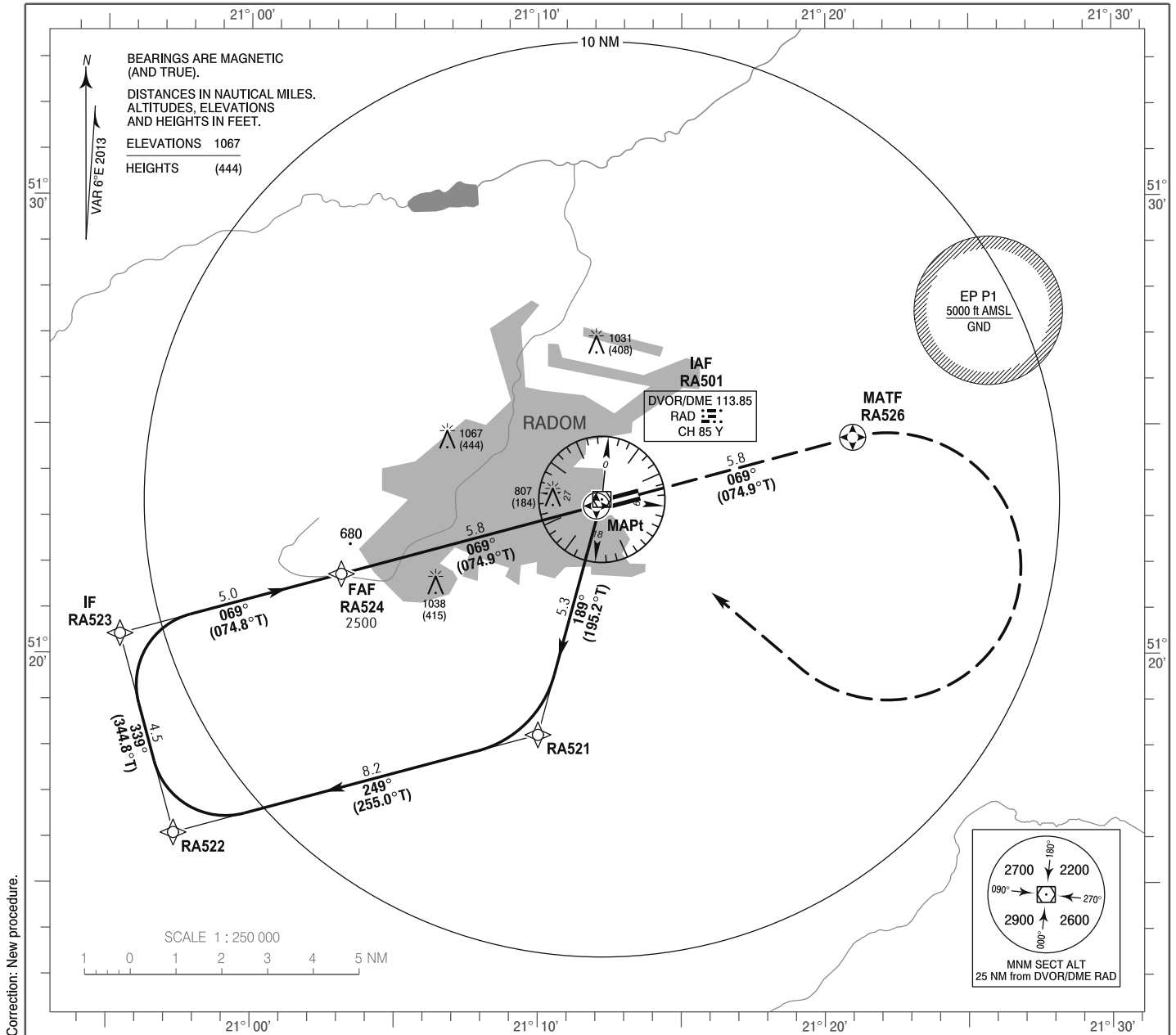


**INSTRUMENT  
APPROACH  
CHART - ICAO**

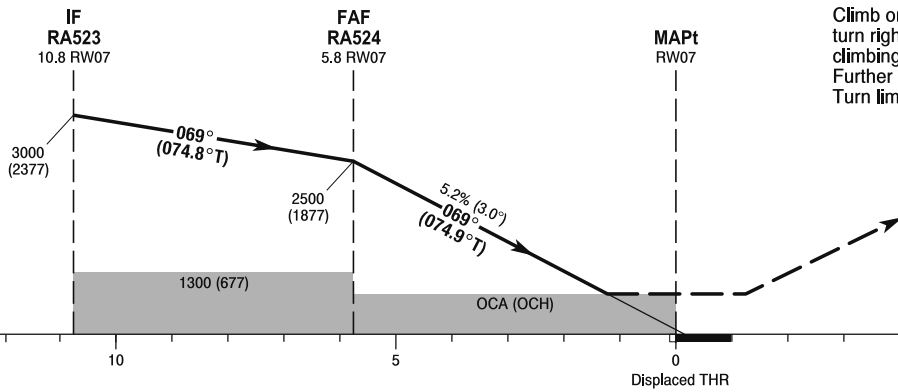
AERODROME ELEV 623 ft  
THR RWY 07 ELEV 618 ft  
HEIGHTS RELATED TO AD ELEV

Radom TOWER 122.050  
Radom INFORMATION 122.050

**Radom - Sadków  
RNAV (GNSS)  
RWY 07 (CAT A/B/C/D)**



TRANSITION ALTITUDE 6500



**MISSED APPROACH**  
Climb on course 069° to RA526,  
turn right to RA501  
climbing to 3000 (2377).  
Further instructions from ATS.  
Turn limited to 220 kt IAS max.

SCALE 1 : 250 000  
Displaced THR  
NM FROM THR RWY 07  
ELEV 623 (AD ELEV)

OCA (OCH)					Distance FAF - MAPt 5.8 NM								
Cat. of ACFT	LNAV	A	B	C	D	Speed	kt	80	100	120	140	160	180
		Straight-in		1060 (437)	1060 (437)	1060 (437)	1060 (437)	Time	min : s	4 : 19	3 : 27	2 : 53	2 : 28
						Rate of descent	ft / min	430	540	640	750	850	960
					Final approach distance/altitude (height)								
Circling*		1110 (487)	1120 (497)	1470 (847)	1470 (847)	Distance		5	4	3	2		
Circling south of aerodrome only.						Altitude (height)		2270 (1647)	1950 (1327)	1630 (1007)	1310 (687)		