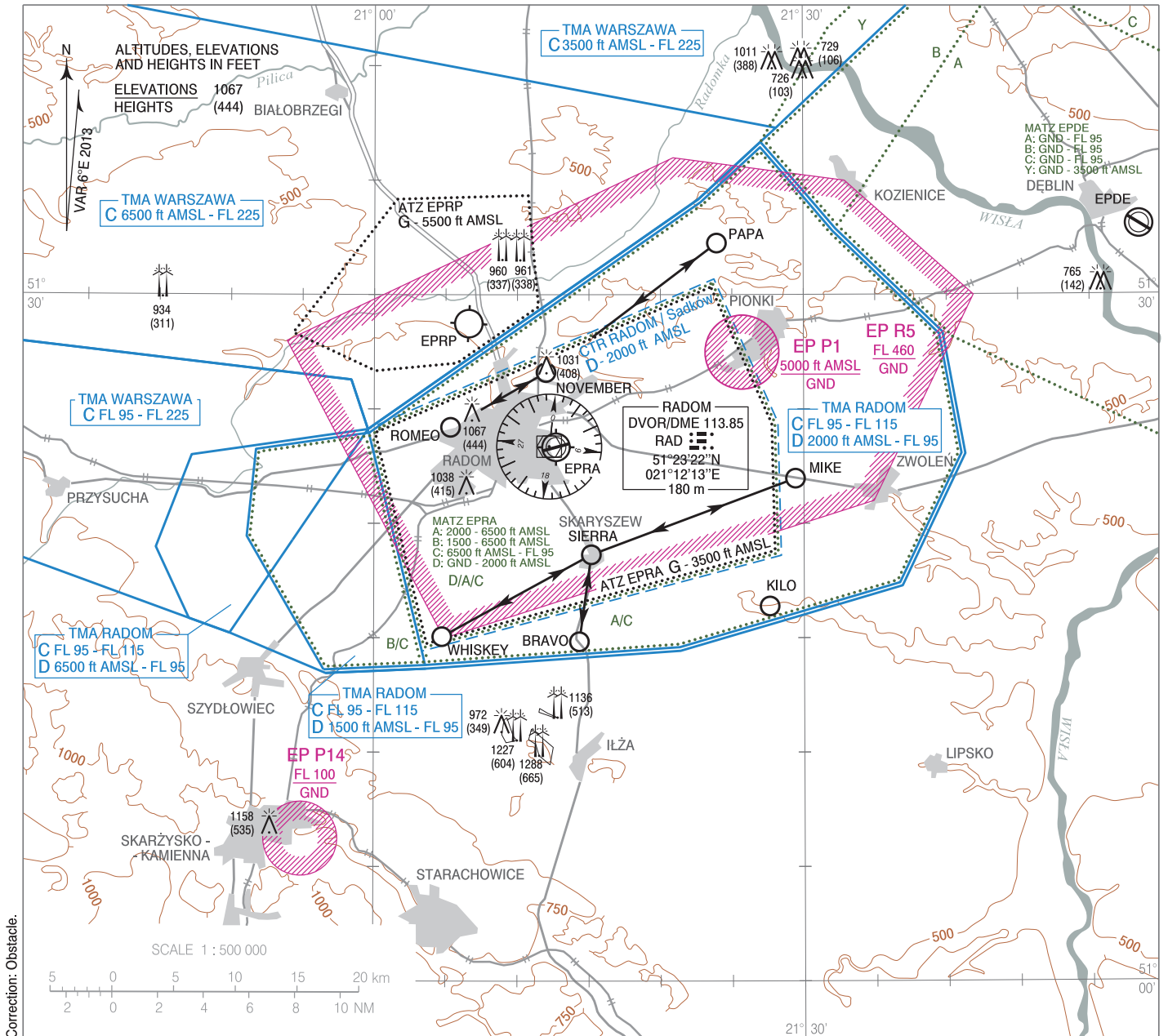


AERODROME ELEV 623 ft  
HEIGHTS RELATED TO AD ELEV

Radom TOWER	122.050
Radom INFORMATION	122.050
Radom RADIO	126.025

**VFR**  
**ARRIVAL AND DEPARTURE ROUTES**

Radom - Sadow



Correction: Obstacle.

POINT ID	LATITUDE	LONGITUDE	POINT DESCRIPTION
BRAVO	51°14'50"N	021°14'20"E	Ponds in Bujak town
KILO	51°16'23"N	021°27'37"E	Church in Kazanów town
MIKE	51°21'58"N	021°29'25"E	Filling station in Miodne town
NOVEMBER	51°26'35"N	021°12'00"E	Heat-generating plant in Gołębów town
PAPA	51°32'15"N	021°23'56"E	Concrete plant in Przejazd town
ROMEO	51°24'12"N	021°05'20"E	Prison compound in Radom town
SIERRA	51°18'38"N	021°15'10"E	Skaryszew town
WHISKEY	51°15'03"N	021°04'45"E	Water tower in Wierzbica town

See AIP Poland AD 2 EPRA