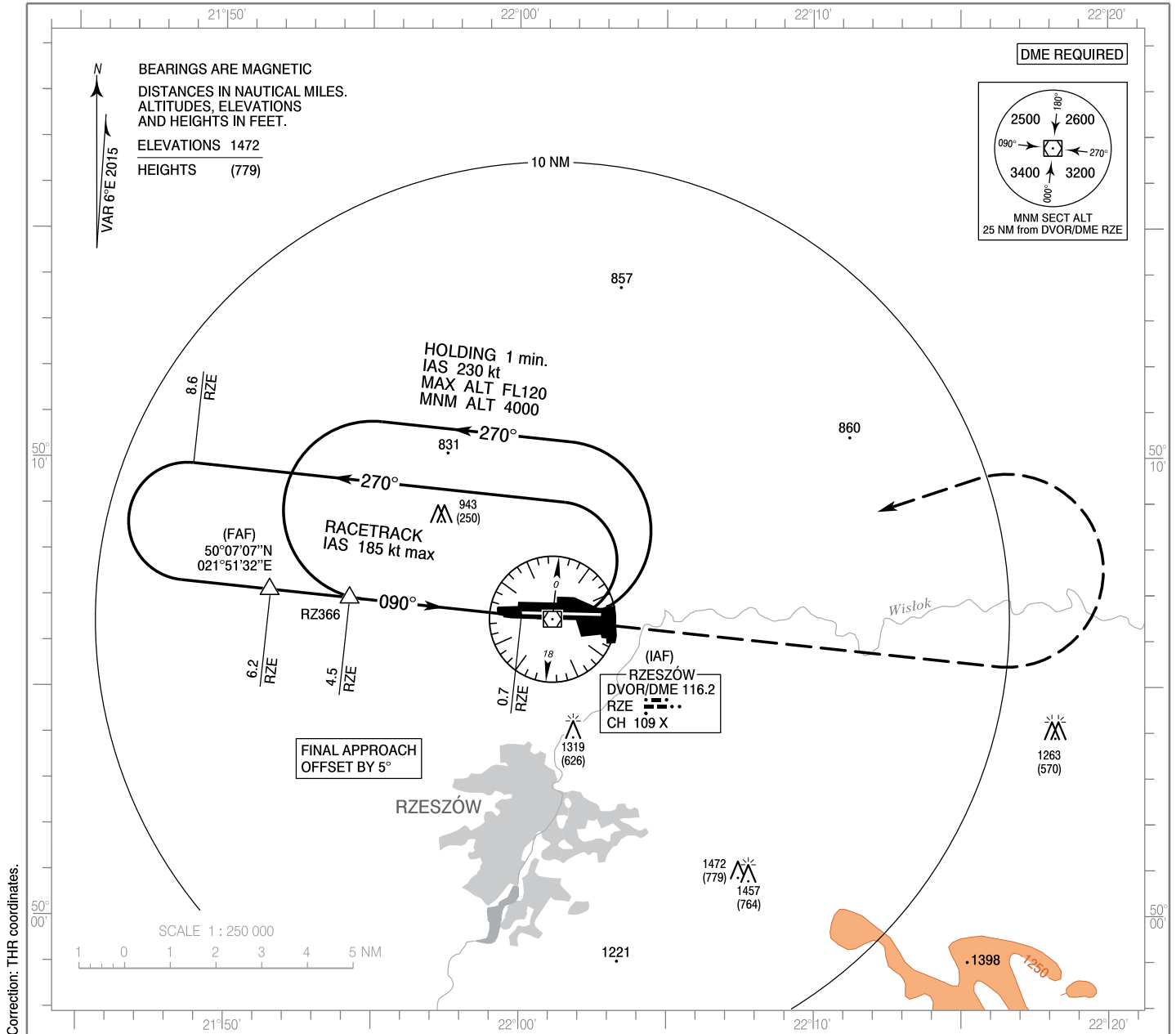


**INSTRUMENT
APPROACH
CHART - ICAO**

AERODROME ELEV 693 ft
THR RWY 09 ELEV 688 ft
HEIGHTS RELATED TO AD ELEV

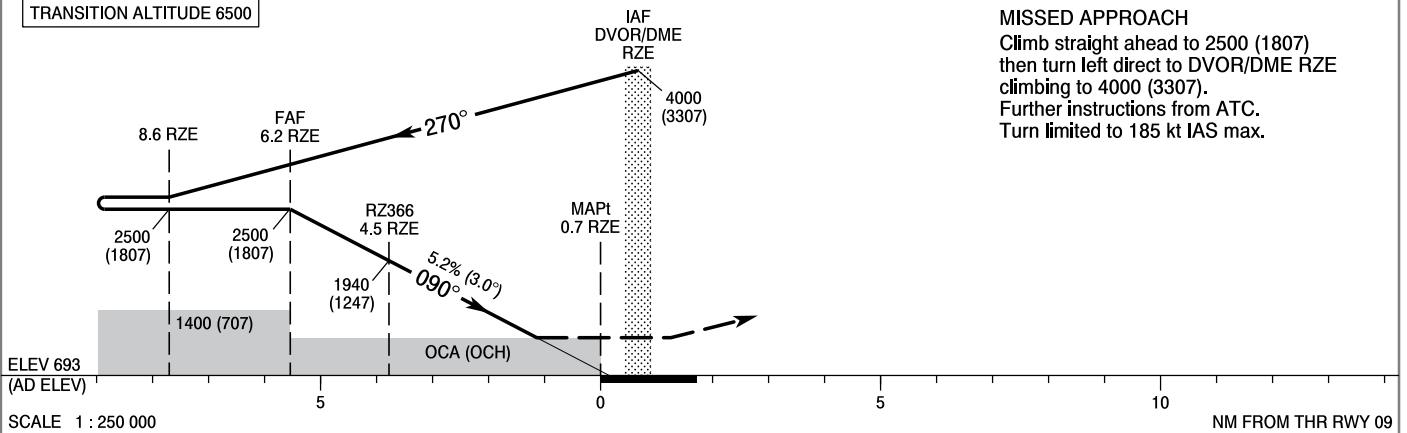
Rzeszów TOWER 126.800
ATIS 124.950

**Rzeszów - Jasionka
VOR z
RWY 09 (CAT A/B/C/D)**



Correction: THR coordinates.

TRANSITION ALTITUDE 6500



MISSED APPROACH
Climb straight ahead to 2500 (1807) then turn left direct to DVOR/DME RZE climbing to 4000 (3307). Further instructions from ATC. Turn limited to 185 kt IAS max.

SCALE 1 : 250 000

NM FROM THR RWY 09

Cat. of ACFT	OCA (OCH)				Distance FAF - MAPt 5.5 NM							
	A	B	C	D	Speed	kt	80	100	120	140	160	180
Straight-in	1100 (407)	1100 (407)	1100 (407)	1100 (407)	Time	min : s	4 : 09	3 : 19	2 : 46	2 : 22	2 : 05	1 : 51
					Rate of descent	ft / min	425	531	637	743	849	955
					Final approach distance / altitude (height)							
Circling*	1150 (457)	1190 (497)	1340 (647)	1390 (697)	Distance		5	4	3	2		
					Altitude (height)		2120 (1427)	1800 (1107)	1480 (787)	1160 (467)		

*Cat C and D: circling north of aerodrome only.

**INSTRUMENT
APPROACH
CHART - ICAO**

**Rzeszów - Jasionka
VOR z
RWY 09 (CAT A/B/C/D)**

FIX / POINT	LATITUDE	LONGITUDE	FIX FORMATION	
IAF DVOR/DME RZE	50°06'28.7"N	022°01'08.1"E		
FAF	50°07'06.7"N	021°51'31.8"E	275.92° GEO (270° MAG) DVOR RZE	6.22 NM DME RZE
RZ366	50°06'56.1"N	021°54'14.6"E	275.92° GEO (270° MAG) DVOR RZE	4.47 NM DME RZE
MAPt	50°06'32.9"N	022°00'04.9"E	275.92° GEO (270° MAG) DVOR RZE	0.68 NM DME RZE
Final approach descent angle: 3.00°				