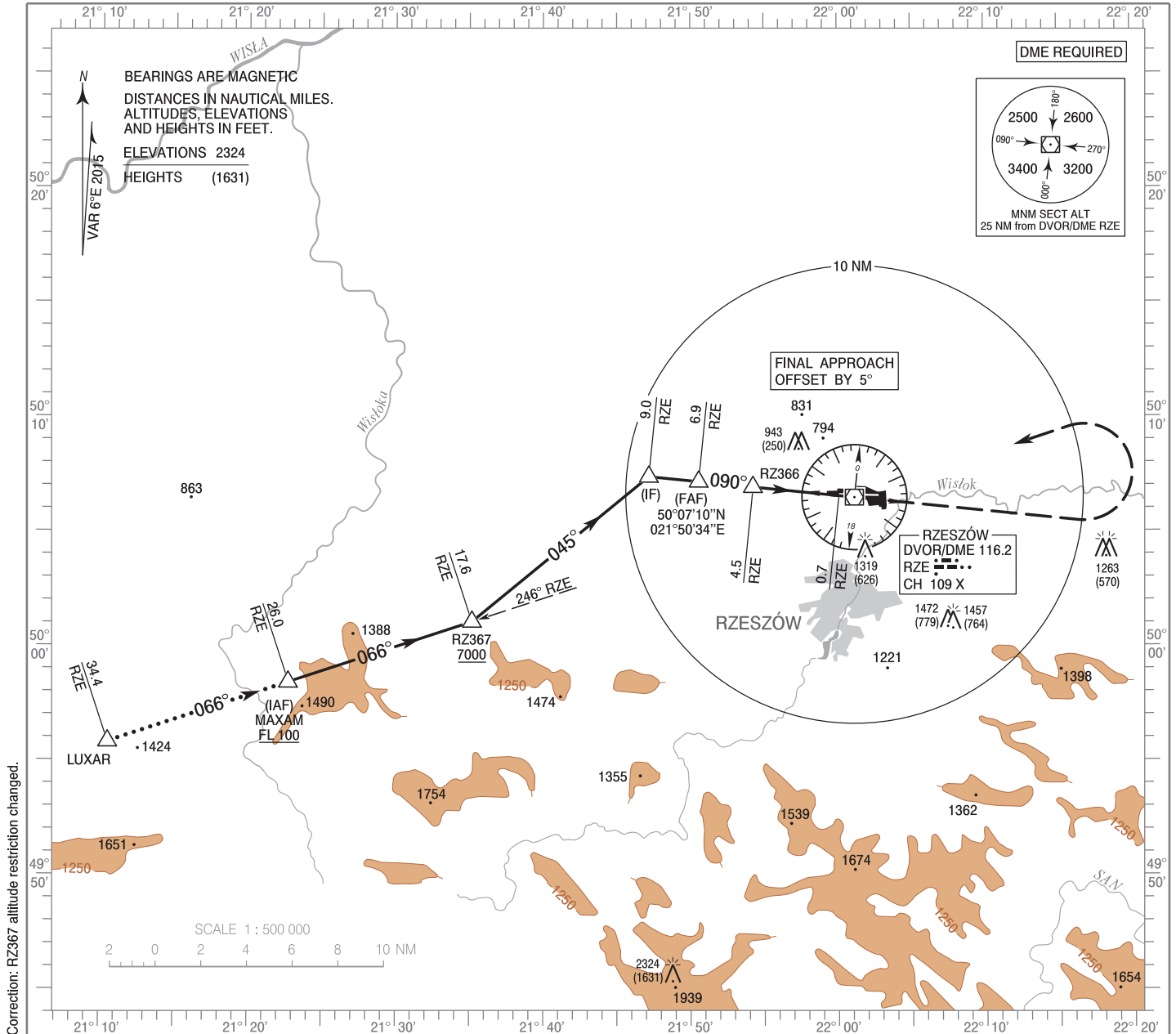


**INSTRUMENT
APPROACH
CHART - ICAO**

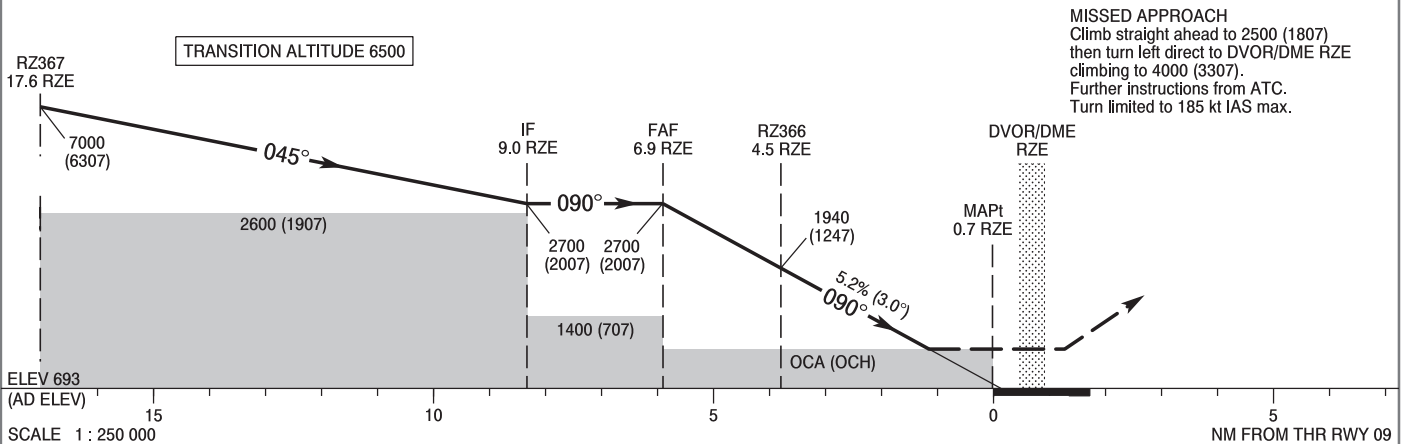
AERODROME ELEV 693 ft
THR RWY 09 ELEV 688 ft
HEIGHTS RELATED TO AD ELEV

Rzeszów TOWER 126.800
ATIS 124.950

**Rzeszów - Jasionka
VOR y
RWY 09 (CAT A/B/C/D)**



Correction: RZ367 altitude restriction changed.



OCA (OCH)					Distance FAF - MAPt 6.2 NM							
Cat. of ACFT	A	B	C	D	Speed	kt	80	100	120	140	160	180
Straight - in	1110 (417)	1110 (417)	1110 (417)	1110 (417)	Time	min : s	4 : 37	3 : 42	3 : 05	2 : 38	2 : 19	2 : 03
					Rate of descent	ft / min	425	531	637	743	849	955
					Final approach distance / altitude (height)							
Circling*	1150 (457)	1190 (497)	1340 (647)	1390 (697)	Distance		6	5	4	3		
					Altitude (height)		2440 (1747)	2120 (1427)	1800 (1107)	1480 (787)		

*Cat C and D: circling north of aerodrome only.

INSTRUMENT
APPROACH
CHART - ICAORzeszów - Jasionka
VOR y
RWY 09 (CAT A/B/C/D)

FIX / POINT	LATITUDE	LONGITUDE	FIX FORMATION	
IAF MAXAM	49°58'25.0"N	021°22'44.0"E	252.20° GEO (246° MAG) DVOR RZE	26.09 NM DME RZE
RZ367	50°01'03.5"N	021°35'10.8"E	252.20° GEO (246° MAG) DVOR RZE	17.61 NM DME RZE
IF	50°07'23.5"N	021°47'10.7"E	275.92° GEO (270° MAG) DVOR RZE	9.04 NM DME RZE
FAF	50°07'10.5"N	021°50'33.6"E	275.92° GEO (270° MAG) DVOR RZE	6.85 NM DME RZE
RZ366	50°06'56.1"N	021°54'14.6"E	275.92° GEO (270° MAG) DVOR RZE	4.47 NM DME RZE
MAPt	50°06'32.9"N	022°00'04.9"E	275.92° GEO (270° MAG) DVOR RZE	0.68 NM DME RZE
Final approach descent angle: 3.00°				