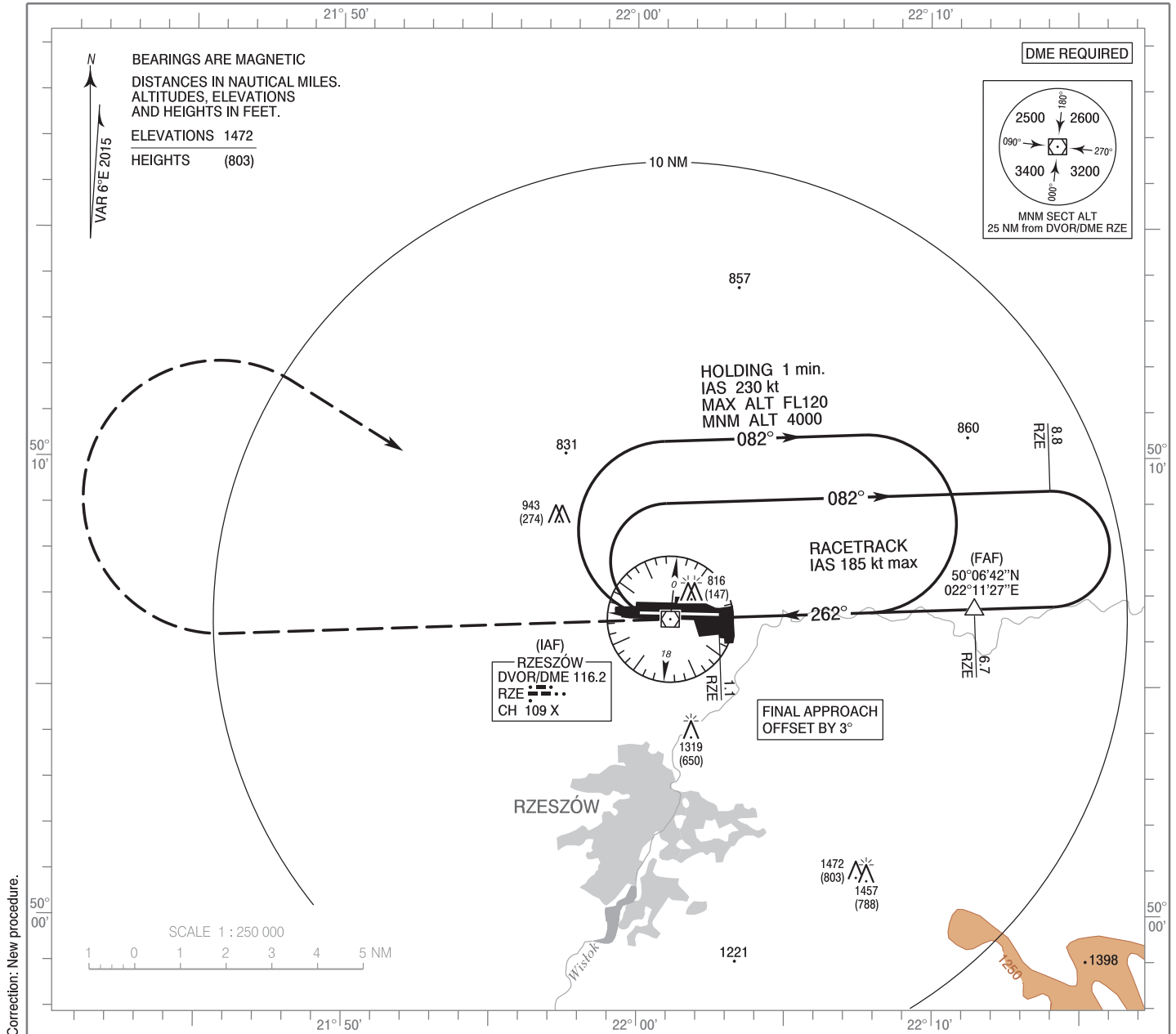


**INSTRUMENT  
APPROACH  
CHART - ICAO**

AERODROME ELEV 693 ft  
THR RWY 27 ELEV 669 ft  
HEIGHTS RELATED TO THR RWY 27

Rzeszów TOWER 126.800  
ATIS 124.950

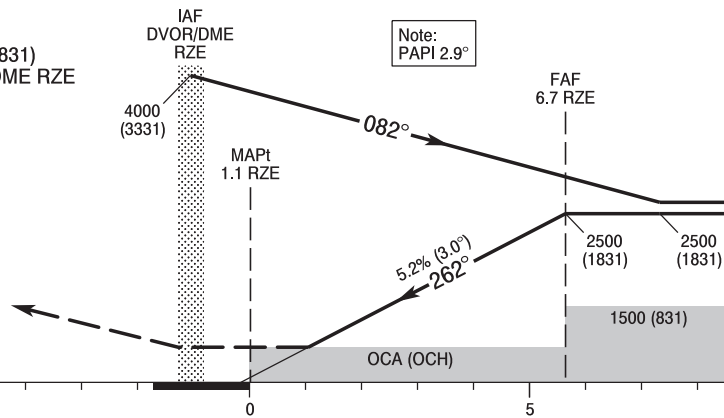
**Rzeszów - Jasionka  
VOR  
RWY 27 (CAT A/B/C/D)**



Correction: New procedure.

**MISSED APPROACH**

Climb straight ahead to 2500 (1831) then turn right direct to DVOR/DME RZE climbing to 4000 (3331). Further instructions from ATC. Turn limited to 220 kt IAS max.



SCALE 1 : 250 000

NM FROM THR RWY 27

Cat. of ACFT	OCA (OCH)				Distance FAF - MAPt 5.6 NM								
	A	B	C	D	Speed	kt	80	100	120	140	160	180	
Straight-in	1050 (381)	1050 (381)	1050 (381)	1050 (381)	Time	min : s	4 : 11	3 : 21	2 : 48	2 : 24	2 : 06	1 : 52	
					Rate of descent	ft / min	425	531	637	743	849	955	
Circling (OCH AAL)*	1140 (447)	1190 (497)	1340 (647)	1390 (697)	Final approach distance / altitude (height)								
					Distance	6	5	4	3				
*Cat C and D: circling north of aerodrome only.					Altitude (height)	2300 (1631)	1980 (1311)	1660 (991)	1340 (671)				

**INSTRUMENT  
APPROACH  
CHART - ICAO**

**Rzeszów - Jasionka  
VOR  
RWY 27 (CAT A/B/C/D)**

FIX / POINT	LATITUDE	LONGITUDE	FIX FORMATION	
IAF DVOR/DME RZE	50°06'28.7"N	022°01'08.1"E		
FAF	50°06'42.2"N	022°11'27.1"E	088.00° GEO (082° MAG) DVOR RZE	6.65 NM DME RZE
MAPt	50°06'30.9"N	022°02'46.7"E	088.00° GEO (082° MAG) DVOR RZE	1.06 NM DME RZE
Final approach descent angle: 3.00°				