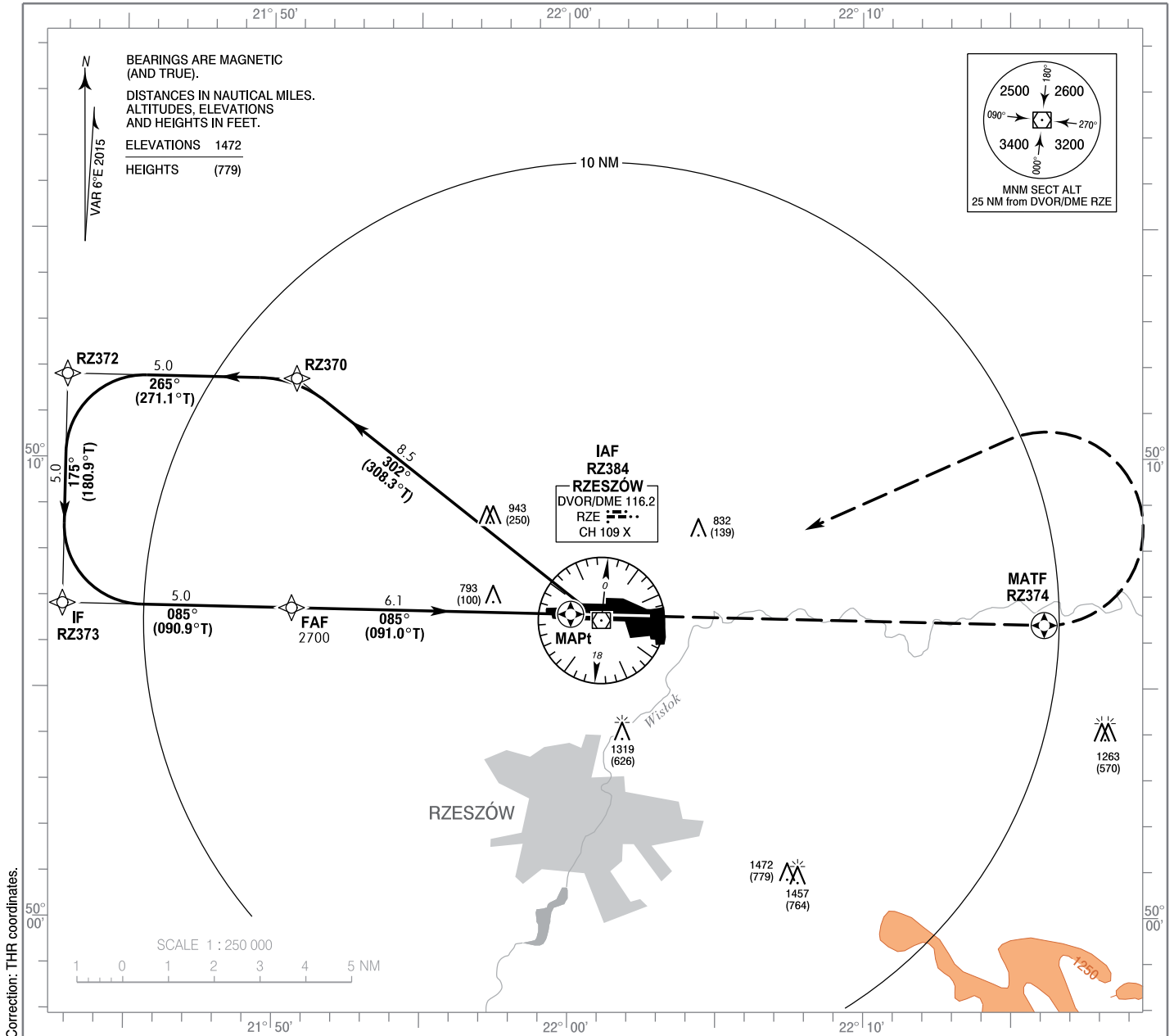


**INSTRUMENT  
APPROACH  
CHART - ICAO**

AERODROME ELEV 693 ft  
THR RWY 09 ELEV 688 ft  
HEIGHTS RELATED TO AD ELEV

Rzeszów TOWER 126.800  
ATIS 124.950

**Rzeszów - Jasionka  
RNAV (GNSS)  
RWY 09 (CAT A/B/C/D)**

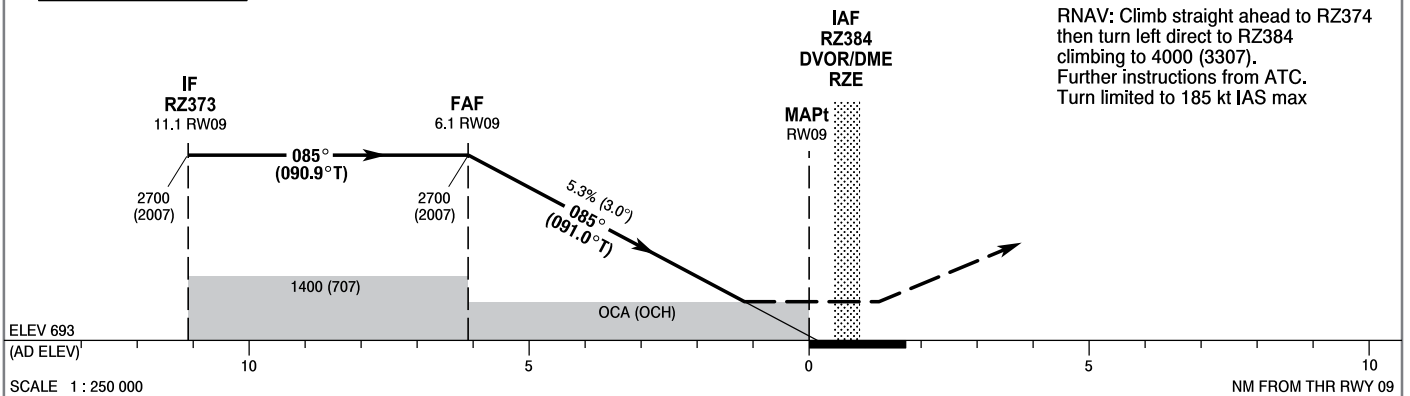


Correction: THR coordinates.

TRANSITION ALTITUDE 6500

**MISSED APPROACH**

RNAV: Climb straight ahead to RZ374 then turn left direct to RZ384 climbing to 4000 (3307). Further instructions from ATC. Turn limited to 185 kt IAS max



OCA (OCH)					Distance FAF - MAPt 6.1								
Cat. of ACFT	A	B	C	D	Speed	kt	80	100	120	140	160	180	
Straight - in	LNAV	1120 (427)	1120 (427)	1120 (427)	1120 (427)	Time	min : s	4 : 34	3 : 39	3 : 03	2 : 37	2 : 17	2 : 02
						Rate of descent	ft / min	429	537	644	751	859	966
						Final approach distance/altitude (height)							
Circling*	1150 (457)	1190 (497)	1340 (647)	1390 (697)	Distance	6	5	4	3	2			
					Altitude (height)	2670 (1977)	2350 (1657)	2030 (1337)	1710 (1017)	1390 (697)			

\*Cat. C and D: circling north of aerodrome only.