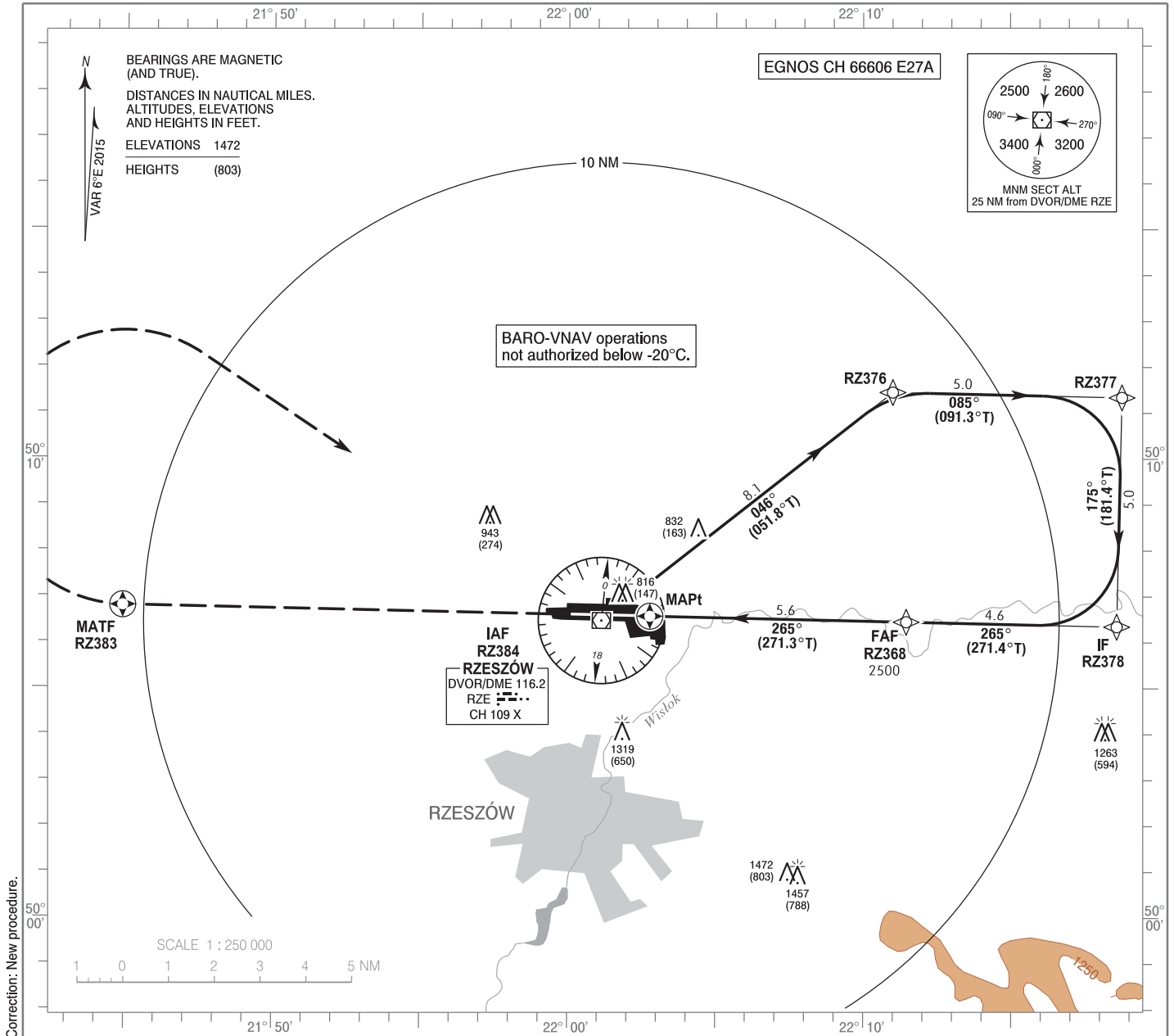


**INSTRUMENT
APPROACH
CHART - ICAO**

AERODROME ELEV 693 ft
THR RWY 27 ELEV 669 ft
HEIGHTS RELATED TO THR RWY 27

Rzeszów TOWER 126.800
ATIS 124.950

**Rzeszów - Jasionka
RNAV (GNSS)
RWY 27 (CAT A/B/C/D)**



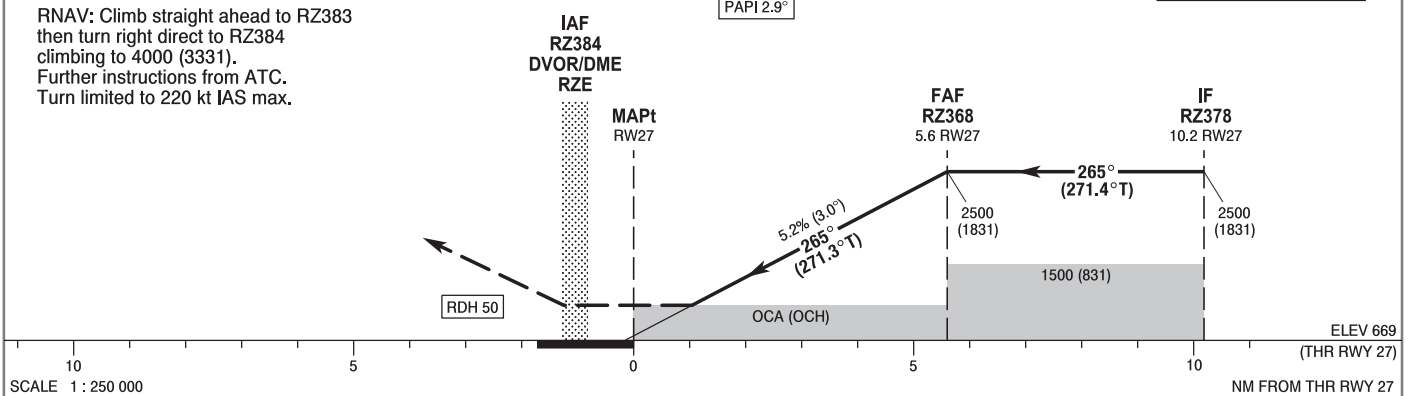
Correction: New procedure.

MISSED APPROACH

RNAV: Climb straight ahead to RZ383 then turn right direct to RZ384 climbing to 4000 (3331). Further instructions from ATC. Turn limited to 220 kt IAS max.

Note: PAPI 2.9°

TRANSITION ALTITUDE 6500



SCALE 1 : 250 000

OCA (OCH)					Distance FAF - MAPt 5.6								
Cat. of ACFT	A	B	C	D	Speed	kt	80	100	120	140	160	180	
Straight - in	LNAV	1050 (381)	1050 (381)	1050 (381)	1050 (381)	Time	min : s	4 : 12	3 : 21	2 : 48	2 : 24	2 : 06	1 : 52
	LNAV / VNAV	950 (281)	960 (291)	970 (301)	980 (311)	Rate of descent	ft / min	425	531	637	743	849	955
	LPV	946 (277)	958 (289)	966 (297)	977 (308)		Final approach distance/altitude (height)						
Circling (OCH AAL)*	1140 (447)	1190 (497)	1340 (647)	1390 (697)	Distance	5	4	3	2				
*Cat. C and D: circling north of aerodrome only.					Altitude (height)	2320 (1651)	2000 (1331)	1680 (1011)	1360 (691)				