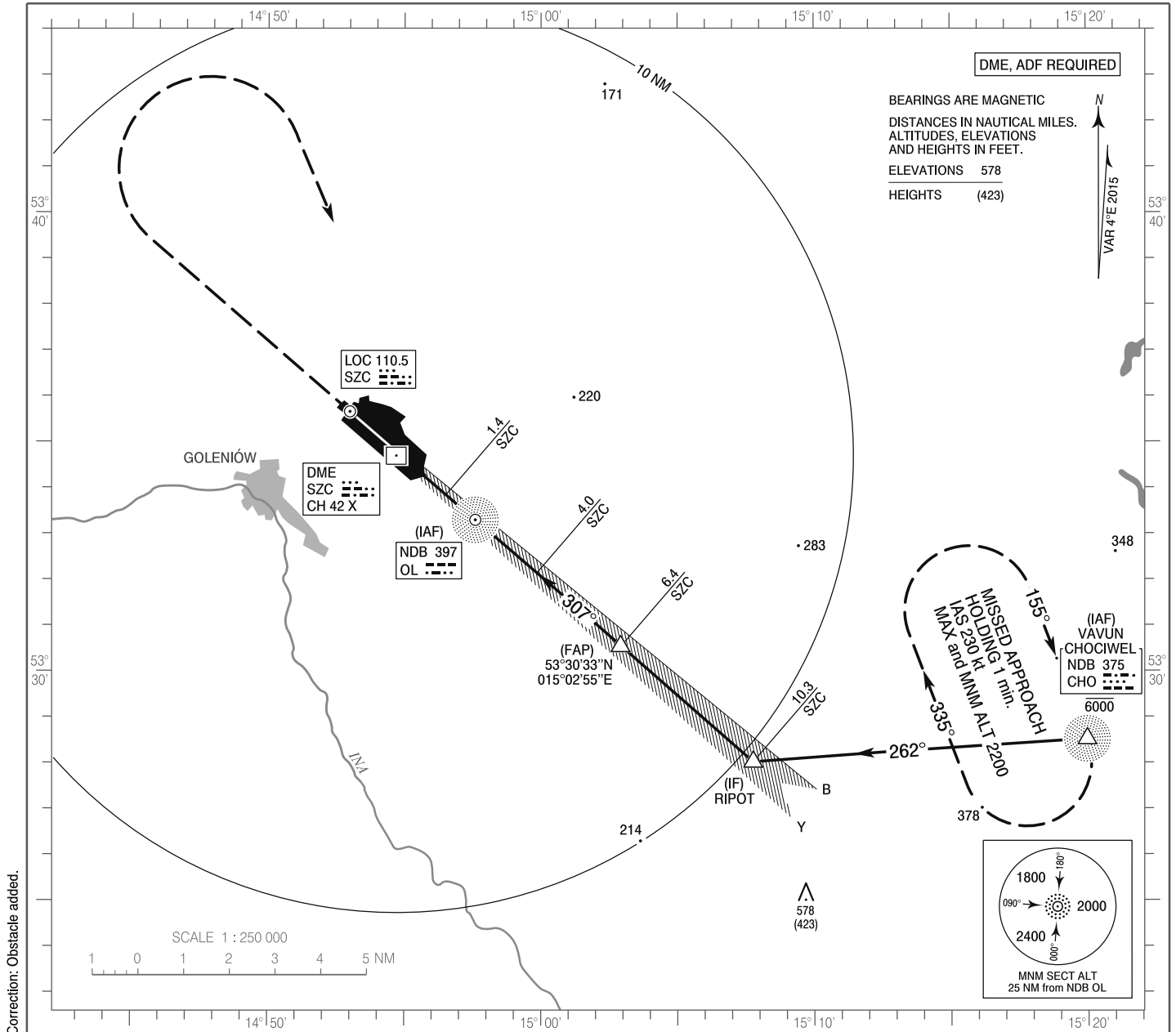


**INSTRUMENT
APPROACH
CHART - ICAO**

AERODROME ELEV 155 ft
THR RWY 31 ELEV 155 ft
HEIGHTS RELATED TO THR RWY 31

Szczecin TOWER 121.250
ATIS 132.125

**Szczecin - Goleniów
ILS z or LOC z
RWY 31 (CAT A/B/C/D)**

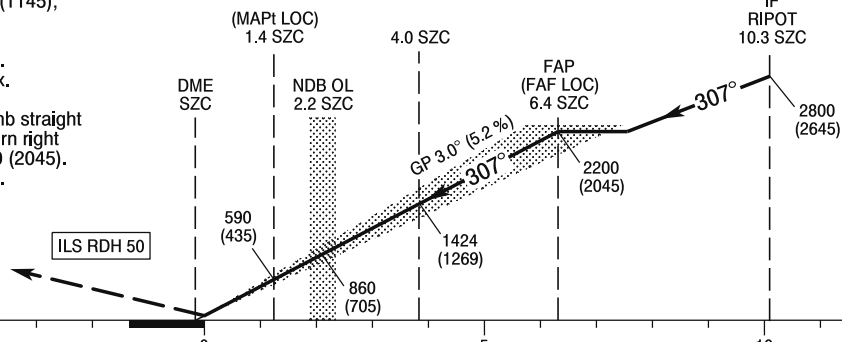


Correction: Obstacle added.

MISSED APPROACH

Climb straight ahead to 1300 (1145), then turn right to NDB OL climbing to 2800 (2645). Further instructions from ATC. Turn limited to 185 kt IAS max.

In case of NDB OL INOP, climb straight ahead to 1300 (1145), then turn right to NDB CHO climbing to 2200 (2045). Further instructions from ATC. Turn limited to 185 kt max.



SCALE 1 : 250 000

OCA (OCH)					Distance FAF - MAPt 5.1 NM								
Cat. of ACFT		A	B	C	D	Speed	kt	80	100	120	140	160	180
		Straight - in	Cat. I	350 (195)	362 (207)	370 (215)	381 (226)	Time	min : s	3 : 47	3 : 02	2 : 32	2 : 10
LOC	590 (435)		590 (435)	590 (435)	590 (435)	Rate of descent	ft / min	430	530	640	740	850	950
Circling (OCH AAL)					590 (435)	610 (455)	750 (595)	850 (695)	Final approach distance/altitude (height)				
					Distance	6	5	4	3	2			
					Altitude (height)	2050 (1895)	1740 (1585)	1420 (1265)	1110 (955)	790 (635)			

**INSTRUMENT
APPROACH
CHART - ICAO**

**Szczecin - Goleniów
ILS z or LOC z
RWY 31 (CAT A/B/C/D)**

FIX / POINT	LATITUDE	LONGITUDE	FIX FORMATION	
IAF VAVUN NDB CHO	53°28'31.1"N	015°19'58.9"E		
IF RIPOT	53°28'02.0"N	015°07'46.0"E	310.86° GEO (307° MAG) LOC SZC	10.28 NM DME SZC
FAP (FAF LOC)	53°30'32.6"N	015°02'55.1"E	310.86° GEO (307° MAG) LOC SZC	6.45 NM DME SZC
MAPt (LOC)	53°33'51.1"N	014°56'31.4"E	310.86° GEO (307° MAG) LOC SZC	1.38 NM DME SZC
Final approach descent angle: 3.00°				