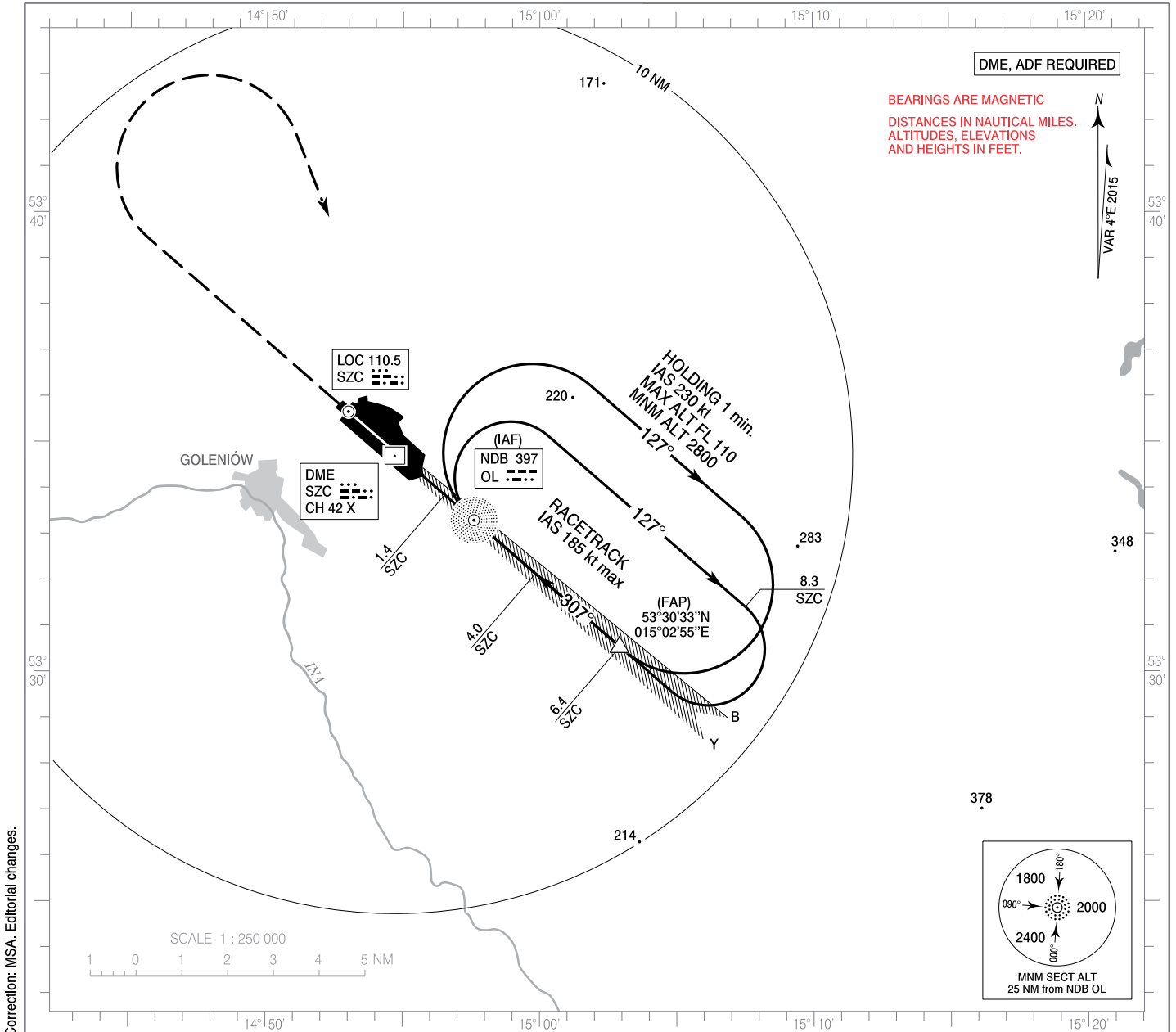


**INSTRUMENT
APPROACH
CHART - ICAO**

AERODROME ELEV 155 ft
THR RWY 31 ELEV 155 ft
HEIGHTS RELATED TO THR RWY 31

Szczecin TOWER 121.250
ATIS 132.125

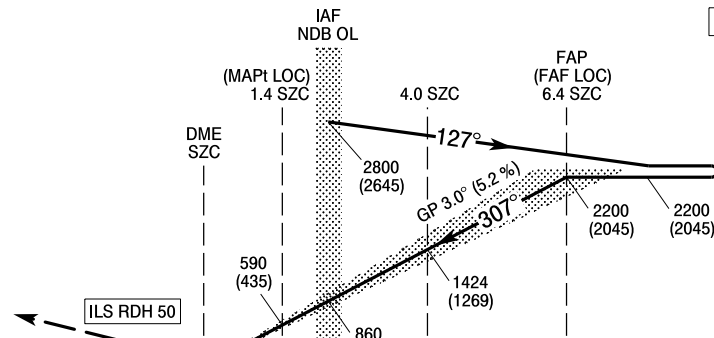
**SZCZECIN / Goleniów
ILS y or LOC y
RWY 31 (CAT A/B/C/D)**



Correction: MSA. Editorial changes.

MISSED APPROACH
Climb straight ahead to 1300 (1145),
then turn right to NDB OL
climbing to 2800 (2645).
Further instructions from ATC.
Turn limited to 185 kt IAS max.

TRANSITION ALTITUDE 6500



ELEV 155 (THR RWY 31)
SCALE 1 : 250 000
NM from THR RWY 31

Cat. of ACFT	OCA (OCH)				Distance FAF - MAPt 5.1 NM								
	A	B	C	D	Speed	kt	80	100	120	140	160	180	
Straight-in	Cat. I	350 (195)	362 (207)	370 (215)	381 (226)	Time	min : s	3 : 47	3 : 02	2 : 32	2 : 10	1 : 54	1 : 41
	LOC	590 (435)	590 (435)	590 (435)	590 (435)	Rate of descent	ft / min	430	530	640	740	850	950
Final approach distance/altitude (height)													
Circling (OCH AAL)	590 (435)	610 (455)	750 (595)	850 (695)	Distance	6	5	4	3	2			
					Altitude (height)	2050 (1895)	1740 (1585)	1420 (1265)	1110 (955)	790 (635)			

**INSTRUMENT
APPROACH
CHART - ICAO**

**SZCZECIN / Goleniów
ILS y or LOC y
RWY 31 (CAT A/B/C/D)**

FIX / POINT	LATITUDE	LONGITUDE	FIX FORMATION	
IAF NDB OL	53°33'18.3"N	014°57'35.9"E		
FAP (FAF LOC)	53°30'32.6"N	015°02'55.1"E	310.86° GEO (307° MAG) LOC SZC	6.45 NM DME SZC
MAPt (LOC)	53°33'51.1"N	014°56'31.4"E	310.86° GEO (307° MAG) LOC SZC	1.38 NM DME SZC
Final approach descent angle: 3.00°				