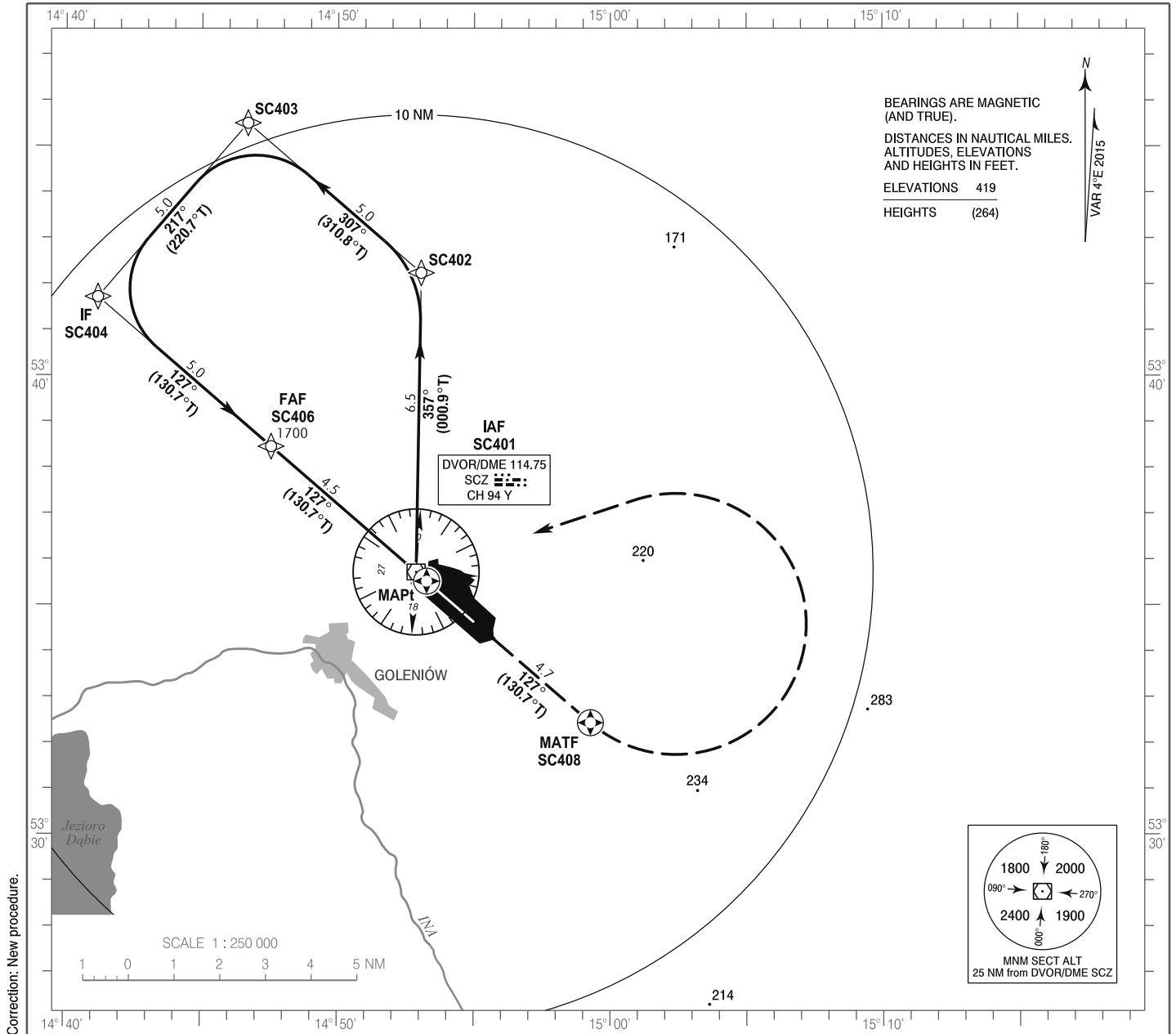


**INSTRUMENT  
APPROACH  
CHART - ICAO**

AERODROME ELEV 155 ft  
THR RWY 13 ELEV 119 ft  
HEIGHTS RELATED TO THR RWY 13

Szczecin TOWER 121.250  
ATIS 132.125

**Szczecin - Goleniów  
RNAV (GNSS)  
RWY 13 (CAT A/B/C/D)**

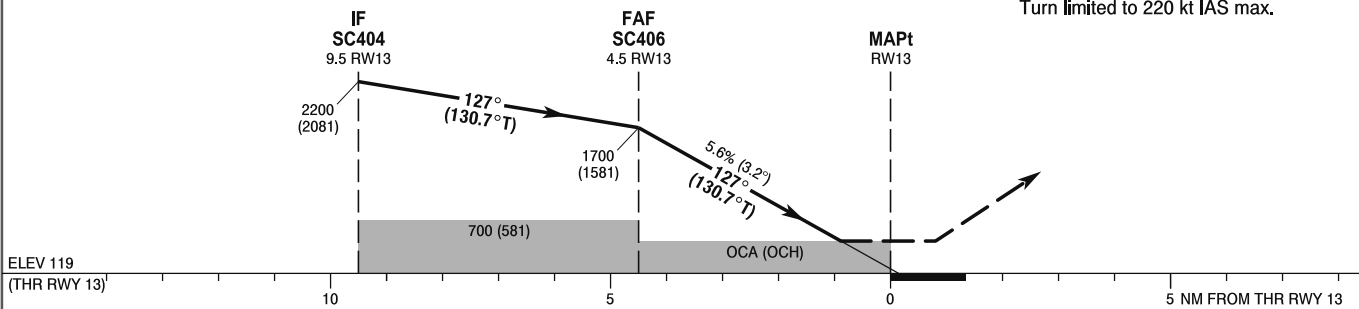


TRANSITION ALTITUDE 6500

Note: PAPI 3°

**MISSED APPROACH**

Climb on course 127° to SC408, turn left to SC401 climbing to 2200 (2081). Further instruction from ATC. Turn limited to 220 kt IAS max.



OCA (OCH)					Distance FAF - MAPt 4.5								
Cat. of ACFT	LNAV	A	B	C	D	Speed	kt	80	100	120	140	160	180
		Straight - in		470 (351)	470 (351)	470 (351)	470 (351)	Time	min : s	3 : 23	2 : 42	2 : 15	1 : 56
						Rate of descent	ft / min	460	570	690	800	910	1030
Circling (OCH AAL)					Final approach distance/altitude (height)								
					Distance	4	3	2	1				
					Altitude (height)	1540 (1421)	1190 (1071)	850 (731)	510 (391)				