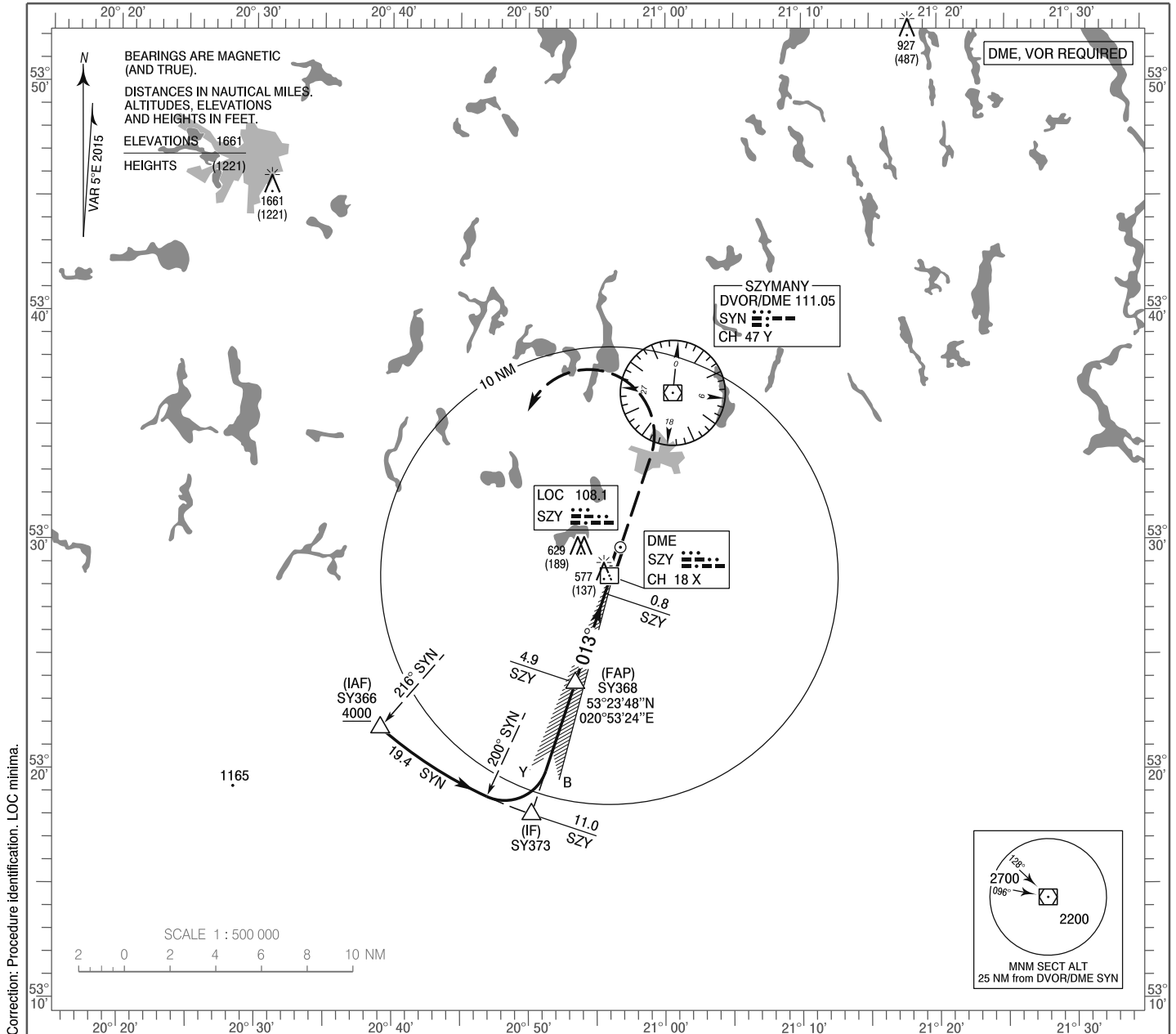


**INSTRUMENT  
APPROACH  
CHART - ICAO**

AERODROME ELEV 464 ft  
THR RWY 01 ELEV 440 ft  
HEIGHTS RELATED TO THR RWY 01

Mazury TOWER 118.025  
Mazury INFORMATION 118.025  
Mazury RADIO 118.025

**Olsztyn - Mazury**  
**ILS z or LOC z**  
**RWY 01 (CAT A/B/C/D)**

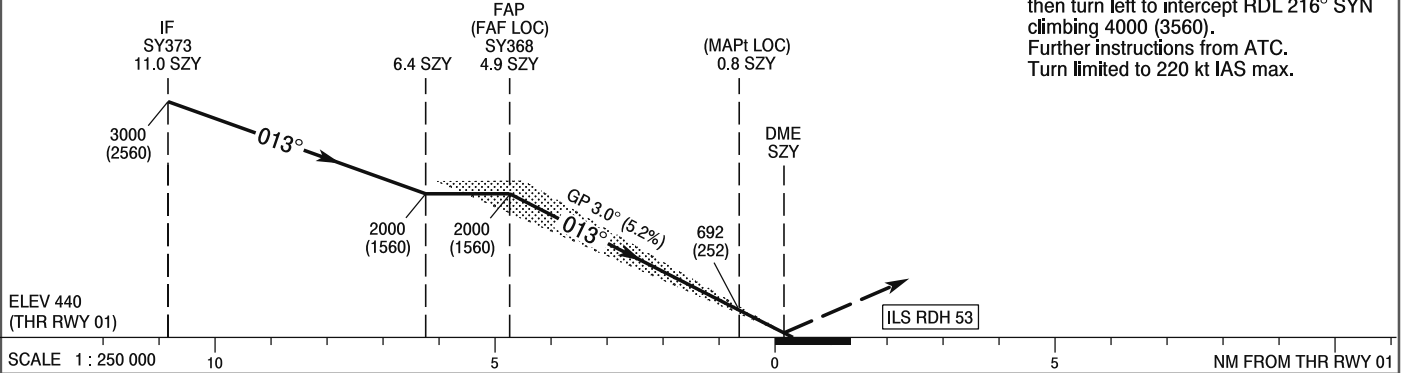


Correction: Procedure identification. LOC minima.

TRANSITION ALTITUDE 6500

**MISSED APPROACH**

Climb straight ahead to 1300 (860) then turn left to intercept RDL 216° SYN climbing 4000 (3560). Further instructions from ATC. Turn limited to 220 kt IAS max.



SCALE 1 : 250 000 10 5 0 5 NM FROM THR RWY 01

OCA (OCH)					Distance FAF - MAPt 4.1								
Cat. of ACFT		A	B	C	D	Speed	kt	80	100	120	140	160	180
		Straight - in	Cat. I	614 (174)	626 (186)	634 (194)	645 (205)	Time	min : s	3 : 05	2 : 28	2 : 03	1 : 46
LOC	790 (350)		790 (350)	790 (350)	790 (350)	Rate of descent	ft / min	430	530	640	740	850	960
Circling (OCH AAL)		960 (496)	960 (496)	1060 (596)	1160 (696)	Final approach distance/altitude (height)							
		Distance		4		3		2					
		Altitude (height)		1710 (1270)		1390 (950)		1080 (640)					

**INSTRUMENT  
APPROACH  
CHART - ICAO**

**Olsztyn - Mazury**  
ILS z or LOC z  
RWY 01 (CAT A/B/C/D)

FIX / POINT	LATITUDE	LONGITUDE	FIX FORMATION	
IAF SY366	53°21'49.5"N	020°39'10.1"E	221.24° GEO (216° MAG) DVOR SYN	19.42 NM DME SYN
IF SY373	53°18'03.2"N	020°50'12.5"E	018.47° GEO (013° MAG) LOC SZY	10.97 NM DME SZY
FAP (FAF LOC) SY368	53°23'47.6"N	020°53'24.1"E	018.48° GEO (013° MAG) LOC SZY	4.91 NM DME SZY
MAPt (LOC)	53°27'41.1"N	020°55'34.5"E	018.48° GEO (013° MAG) LOC SZY	0.80 NM DME SZY
Final approach descent angle: 3.00°				