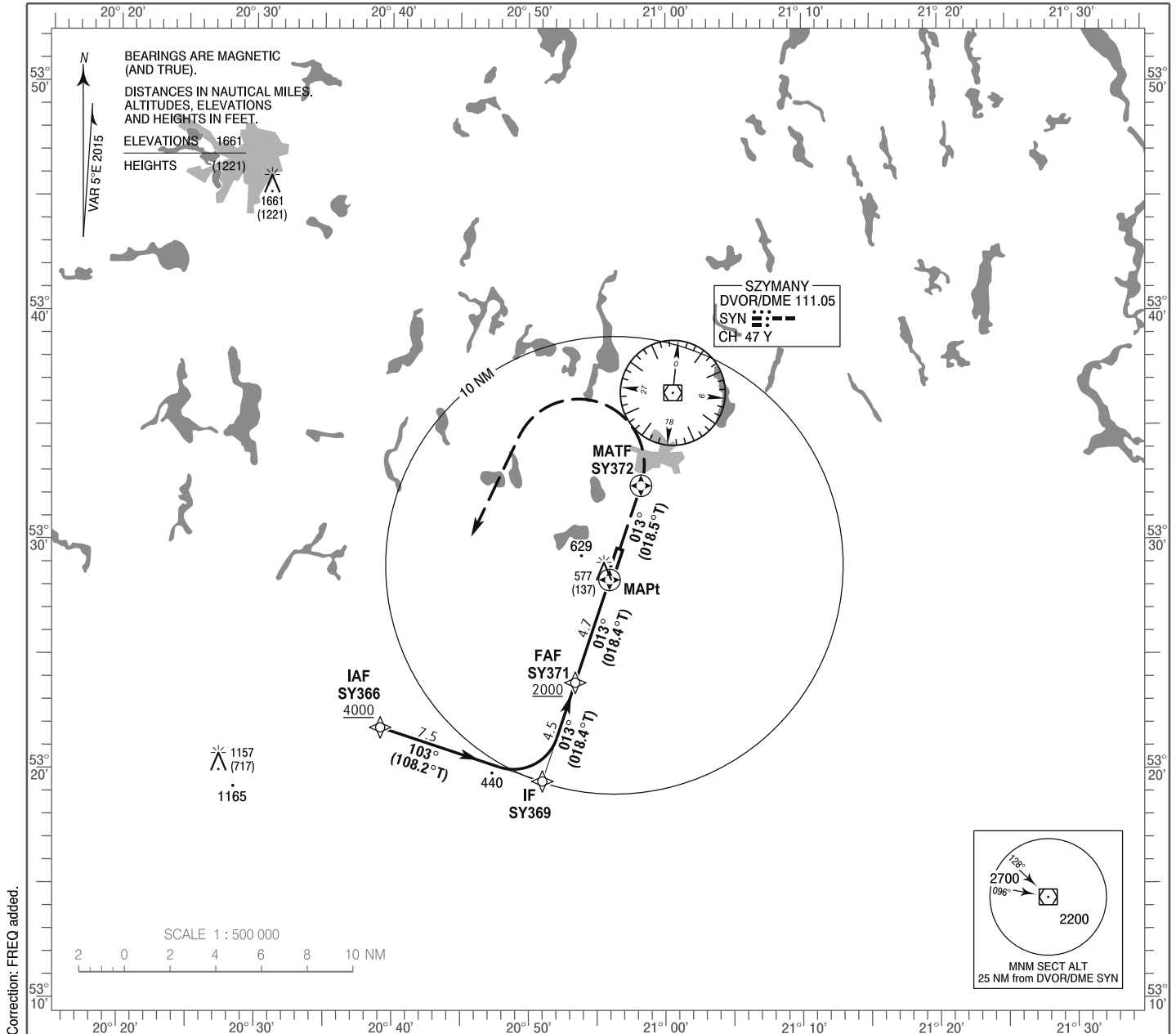


**INSTRUMENT  
APPROACH  
CHART - ICAO**

AERODROME ELEV 464 ft  
THR RWY 01 ELEV 440 ft  
HEIGHTS RELATED TO THR RWY 01

Mazury TOWER 118.025  
Mazury INFORMATION 118.025  
Mazury RADIO 118.025

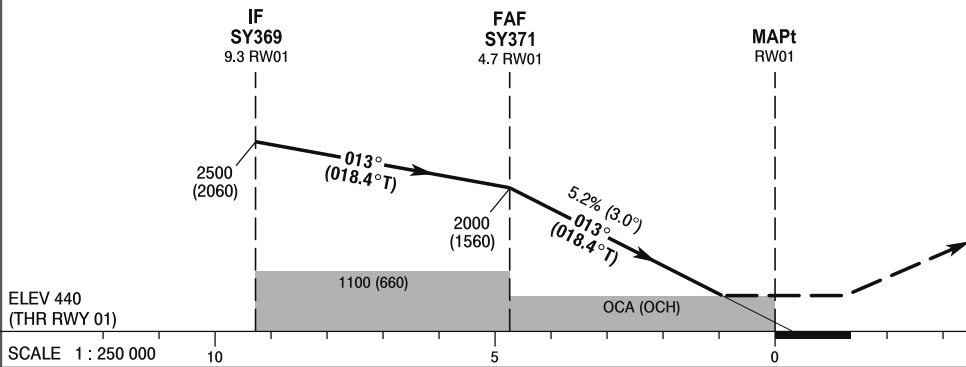
**Olsztyn - Mazury  
RNAV (GNSS)  
RWY 01 (CAT A/B/C/D)**



TRANSITION ALTITUDE 6500

**MISSED APPROACH**

Climb straight ahead to SY372, then turn left direct to SY366 climbing 4000 (3560). Further instructions from ATC. Turn limited to 220 kt IAS max.



SCALE 1 : 250 000 10 5 0 5 NM FROM THR RWY 01

OCA (OCH)					Distance FAF - MAPt 4.7								
Cat. of ACFT	A	B	C	D	Speed	kt	80	100	120	140	160	180	
Straight-in	LNAV	830 (390)	830 (390)	830 (390)	830 (390)	Time	min : s	3 : 33	2 : 51	2 : 22	2 : 02	1 : 47	1 : 35
						Rate of descent	ft / min	430	540	640	750	850	960
Circling (OCH AAL)*					Final approach distance/altitude (height)								
					Distance	4		3		2			
					Altitude (height)	1770 (1330)		1450 (1010)		1130 (690)			

\*A/c cat. C and D circling west of AD only.