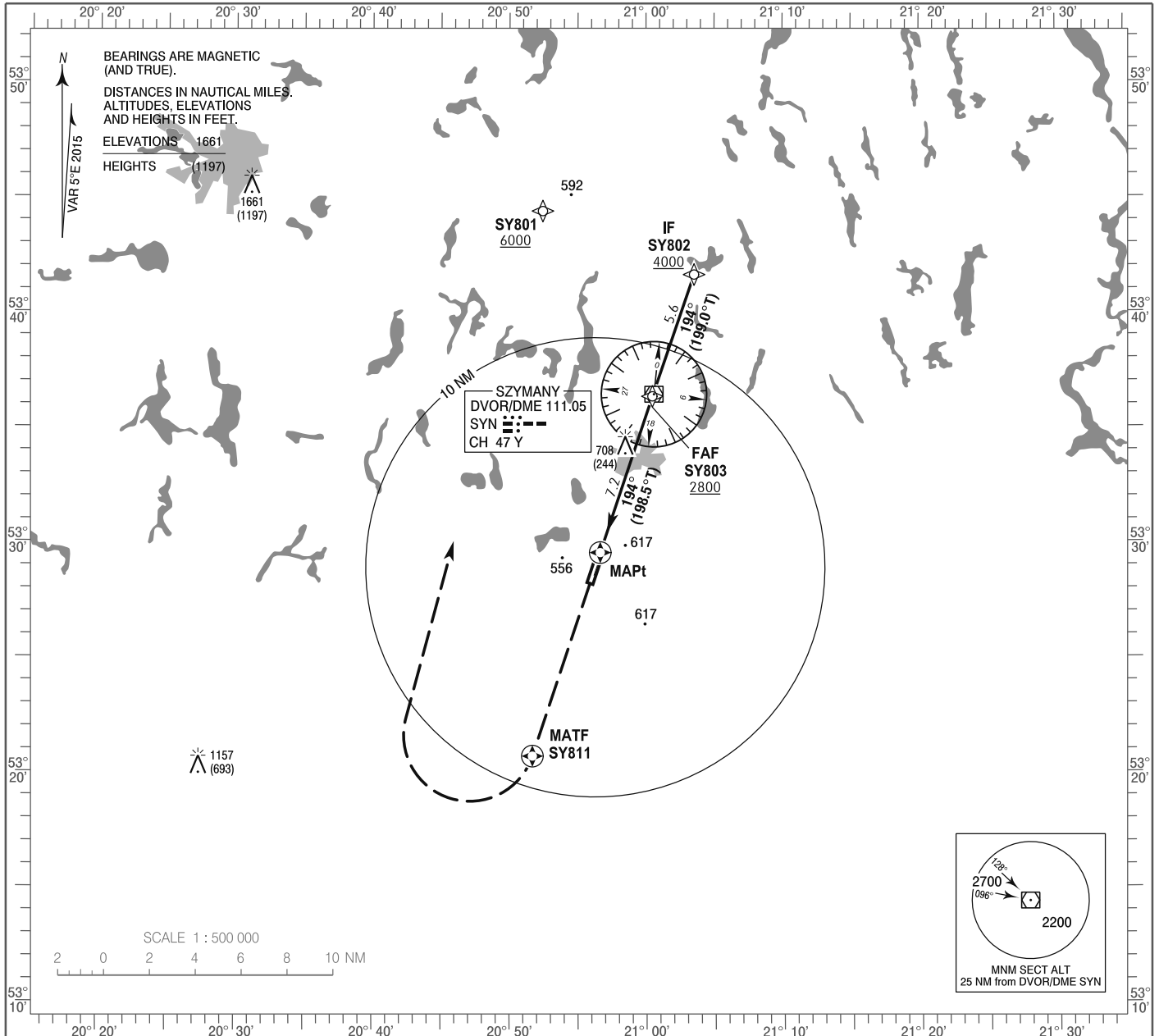


**INSTRUMENT
APPROACH
CHART - ICAO**

AERODROME ELEV 464 ft
THR RWY 19 ELEV 464 ft
HEIGHTS RELATED TO THR RWY 19

Mazury TOWER 118.025
Mazury INFORMATION 118.025

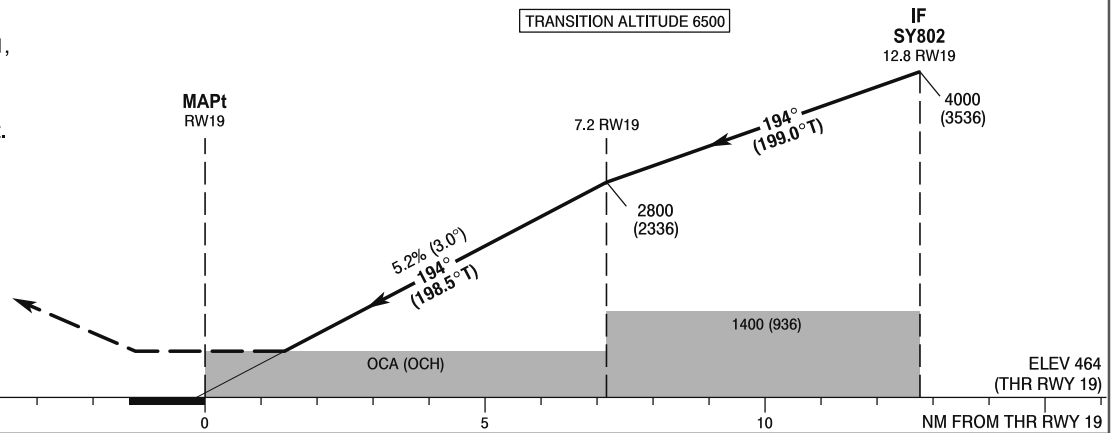
**Olsztyn - Mazury
RNAV (GNSS)
RWY 19 (CAT A/B/C/D)**



MISSED APPROACH

Climb straight ahead to SY811,
then turn right direct to SY801
climbing 6000 (5536).
Further instructions from ATC.
Turn limited to 220 kt IAS max.

TRANSITION ALTITUDE 6500



SCALE 1 : 250 000

OCA (OCH)					Distance FAF - MAPt 7.2							
Cat. of ACFT		A	B	C	D	Speed						
		970 (506)	970 (506)	970 (506)	970 (506)	kt	80	100	120	140	160	180
Straight - in	LNAV	970 (506)	970 (506)	970 (506)	970 (506)	Time	min : s					
						Rate of descent	ft / min					
							Final approach distance/altitude (height)					
Circling (OCH AAL)*		970 (506)	970 (506)	1060 (596)	1160 (696)	Distance	7	6	5	4	3	2
						Altitude (height)	2750 (2286)	2430 (1966)	2110 (1646)	1790 (1326)	1470 (1006)	1160 (696)

*A/c cat. C and D circling west of AD only.