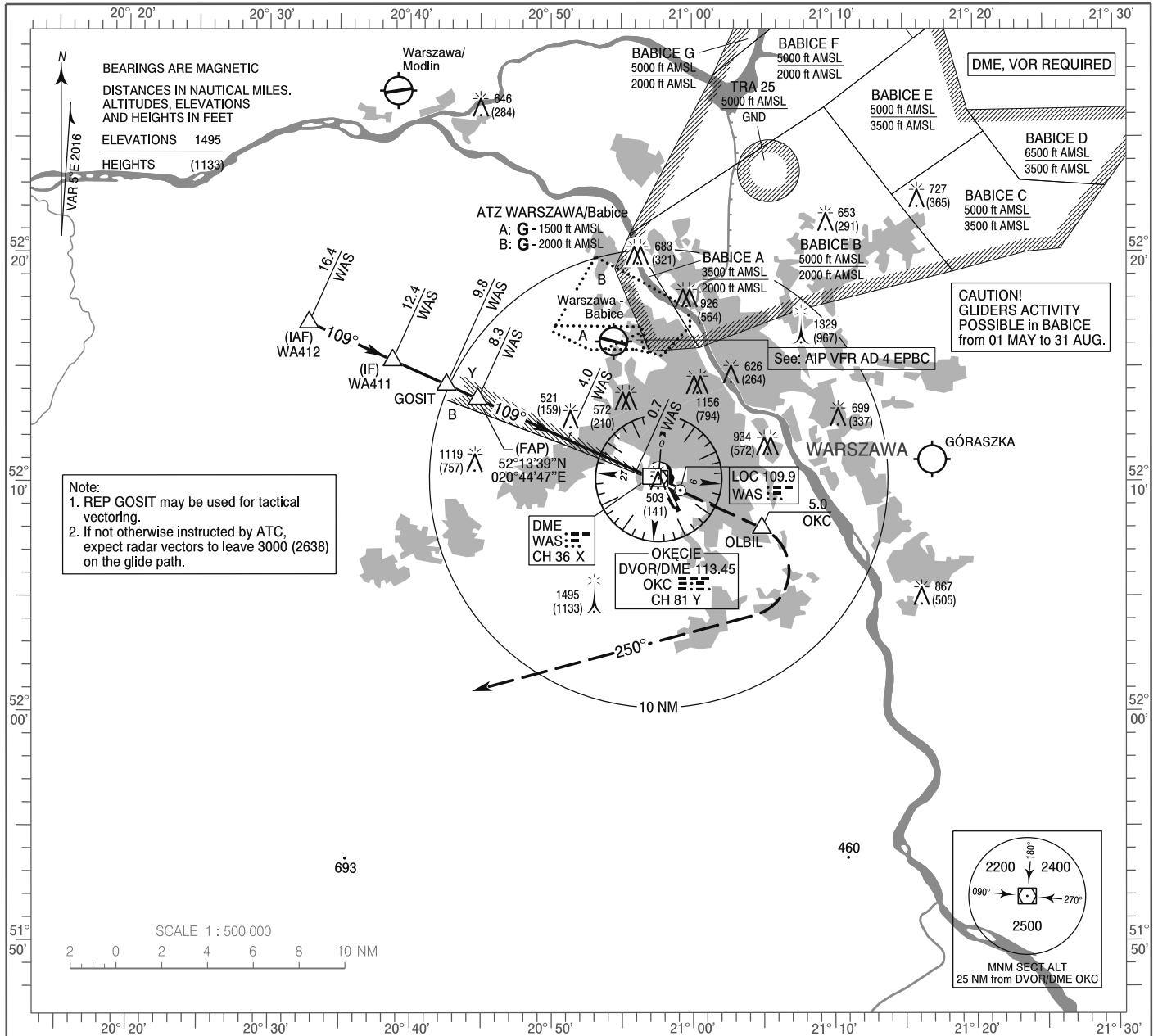


**INSTRUMENT
APPROACH
CHART - ICAO**

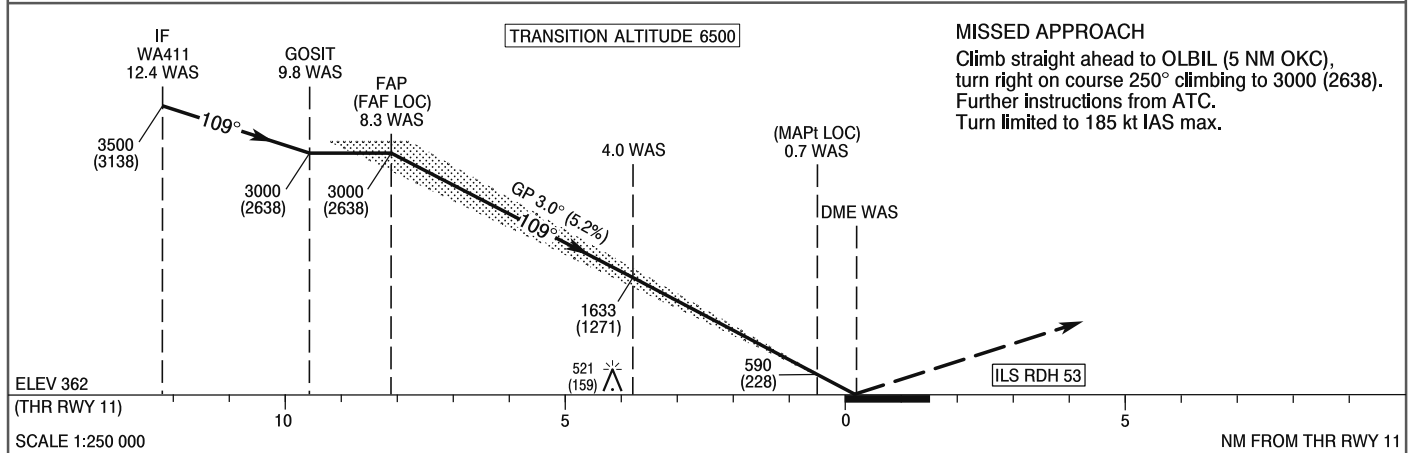
AERODROME ELEV 362 ft
THR RWY 11 ELEV 362 ft
HEIGHTS RELATED TO THR RWY 11

Warszawa APPROACH	128.800	Warszawa DIRECTOR	129.375
ATIS	125.050	Okęcie TOWER	118.300
	120.450	Okęcie GROUND	121.900

**WARSAW CHOPIN AIRPORT
ILS CAT II or LOC
RWY 11 (CAT A/B/C/D)**



Correction: BABICE AREA. Obstacle. VAR.



MISSED APPROACH
Climb straight ahead to OLBIL (5 NM OKC),
turn right on course 250° climbing to 3000 (2638).
Further instructions from ATC.
Turn limited to 185 kt IAS max.

OCA (OCH)					Distance FAF - MAPt 7.6 NM										
Cat. of ACFT	Cat. of ACFT	A	B	C	D	Speed	kt	80	100	120	140	160	180		
		Straight - in	Cat. I	561 (199)	571 (209)	581 (219)	591 (229)	Time	min : s	5 : 41	4 : 32	3 : 47	3 : 15	2 : 50	2 : 31
			Cat. II	440 (78)	457 (95)	470 (108)	483 (121)	Rate of descent	ft / min	430	540	640	750	850	960
	LOC	770 (408)	770 (408)	770 (408)	770 (408)	Final approach distance/altitude (height)									
Circling (OCH AAL)*		800 (438)	860 (498)	970 (608)	1060 (698)	Distance		6	5	4					
						Altitude (height)		2270 (1908)	1960 (1598)	1640 (1278)	1320 (958)				

INSTRUMENT
APPROACH
CHART - ICAO

WARSAW CHOPIN AIRPORT
ILS CAT II or LOC
RWY 11 (CAT A/B/C/D)

FIX / POINT	LATITUDE	LONGITUDE	FIX FORMATION	
IAF WA412	52°16'57.7"N	020°32'48.0"E	114.20° GEO (109° MAG) LOC WAS	16.38 NM DME WAS
IF WA411	52°15'19.3"N	020°38'44.3"E	114.28° GEO (109° MAG) LOC WAS	12.38 NM DME WAS
REP GOSIT	52°14'15.7"N	020°42'33.9"E	114.36° GEO (109° MAG) LOC WAS	9.79 NM DME WAS
FAP (FAF LOC)	52°13'38.6"N	020°44'47.3"E	114.36° GEO (109° MAG) LOC WAS	8.29 NM DME WAS
MAPt (LOC)	52°10'30.4"N	020°56'01.6"E	114.36° GEO (109° MAG) LOC WAS	0.70 NM DME WAS
REP OLBIL	52°08'00.5"N	021°04'54.5"E	115.80° GEO (111° MAG) DVOR OKC	5.00 NM DME OKC
Final approach descent angle: 3.00°				

