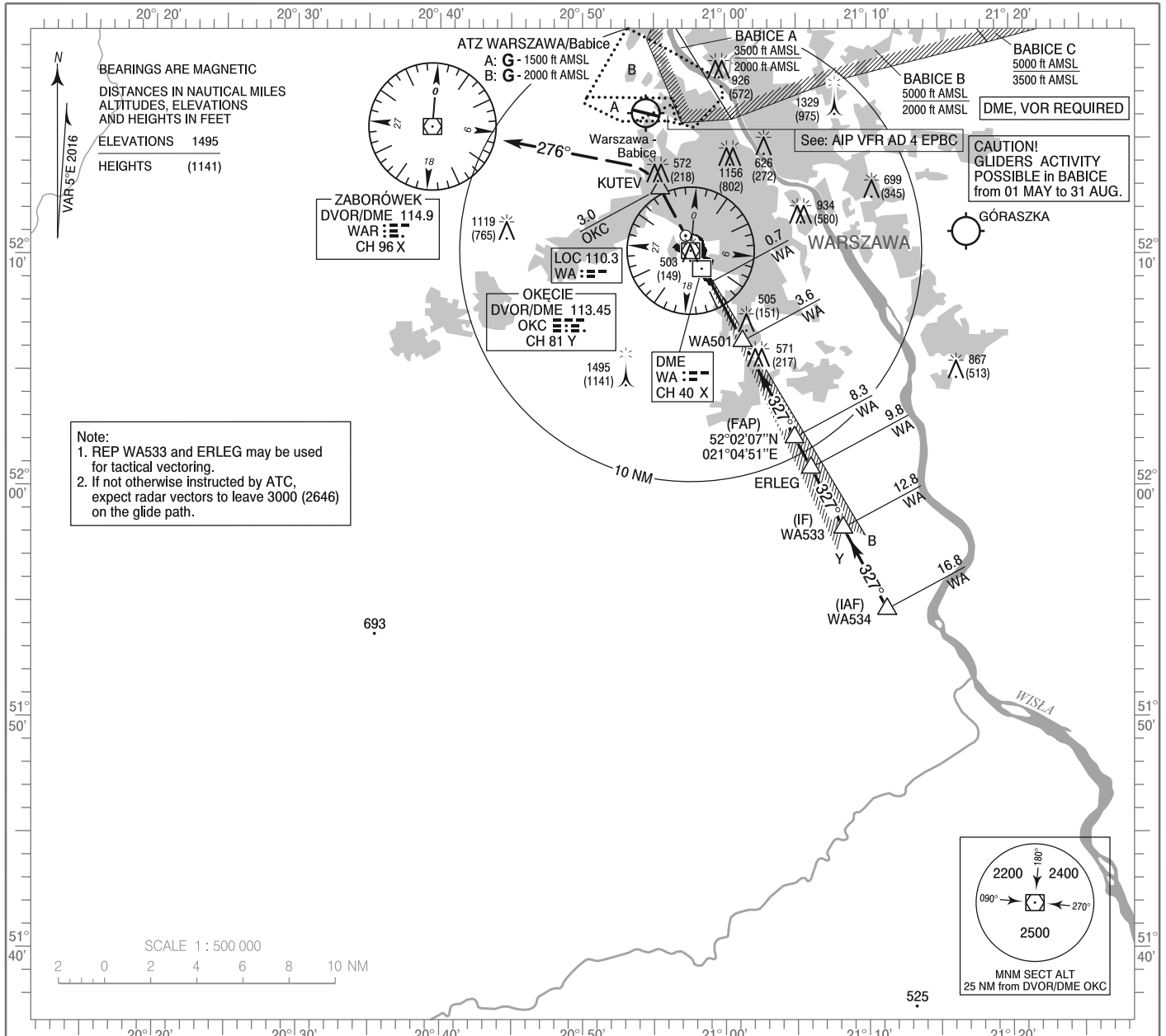


**INSTRUMENT  
APPROACH  
CHART - ICAO**

AERODROME ELEV 362 ft  
THR RWY 33 ELEV 354 ft  
HEIGHTS RELATED TO THR RWY 33

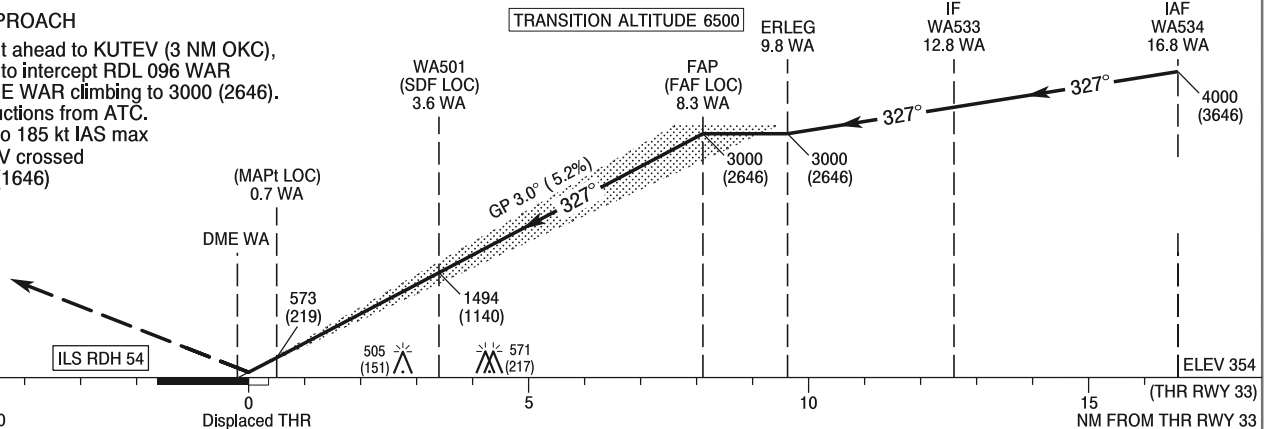
Warszawa APPROACH	128.800	Warszawa DIRECTOR	129.375
ATIS	125.050	Okecie TOWER	118.300
	120.450	Okecie GROUND	121.900

**WARSAW CHOPIN AIRPORT  
ILS CAT II & III or LOC  
RWY 33 (CAT A/B/C/D)**



**MISSED APPROACH**

Climb straight ahead to KUTEV (3 NM OKC), then turn left to intercept RDL 096 WAR to DVOR/DME WAR climbing to 3000 (2646). Further instructions from ATC. Turn limited to 185 kt IAS max only if KUTEV crossed below 2000 (1646)



OCA (OCH)		A	B	C	D	Distance FAF - MAPt 7.6 NM							
Straight - in	Cat. I	537 (183)	549 (195)	557 (203)	568 (214)	Speed	kt	80	100	120	140	160	180
	Cat. II (2.5%)*	449 (95)	466 (112)	478 (124)	492 (138)	Time	min : s	5 : 43	4 : 34	3 : 49	3 : 16	2 : 51	2 : 32
	Cat. II (3.0%)*	429 (75)	446 (92)	458 (104)	472 (118)	Rate of descent	ft / min	430	540	640	750	850	960
	LOC	760 (406)	760 (406)	760 (406)	760 (406)								
When stepdown fix not received		820 (466)	820 (466)	820 (466)	820 (466)	Final approach distance/altitude (height)							
ILS CAT IIIA approved.													
Circling (OCH AAL) - see overleaf		830 (468)	860 (498)	970 (608)	1050 (688)	Distance		8	6	4	2		
*minimum missed approach climb gradient						Altitude (height)		2900 (2546)	2260 (1906)	1620 (1266)	990 (636)		

INSTRUMENT  
APPROACH  
CHART - ICAO

WARSAW CHOPIN AIRPORT  
ILS CAT II & III or LOC  
RWY 33 (CAT A/B/C/D)

FIX / POINT	LATITUDE	LONGITUDE	FIX FORMATION	
IAF WA534	51°54'40.1"N	021°11'17.8"E	331.91° GEO (327° MAG) LOC WA	16.78 NM DME WA
IF WA533	51°58'11.5"N	021°08'15.1"E	331.87° GEO (327° MAG) LOC WA	12.78 NM DME WA
REP ERLEG	52°00'47.2"N	021°06'00.2"E	331.84° GEO (327° MAG) LOC WA	9.83 NM DME WA
FAP (FAF LOC)	52°02'06.8"N	021°04'51.0"E	331.83° GEO (327° MAG) LOC WA	8.32 NM DME WA
WA501 (SDF LOC)	52°06'16.6"N	021°01'13.7"E	331.83° GEO (327° MAG) LOC WA	3.59 NM DME WA
MAPt (LOC)	52°08'49.4"N	020°59'00.4"E	331.83° GEO (327° MAG) LOC WA	0.70 NM DME WA
REP KUTEV	52°12'52.6"N	020°55'27.7"E	333.94° GEO (329° MAG) DVOR OKC	3.00 NM DME OKC
Final approach descent angle: 3.00°				

