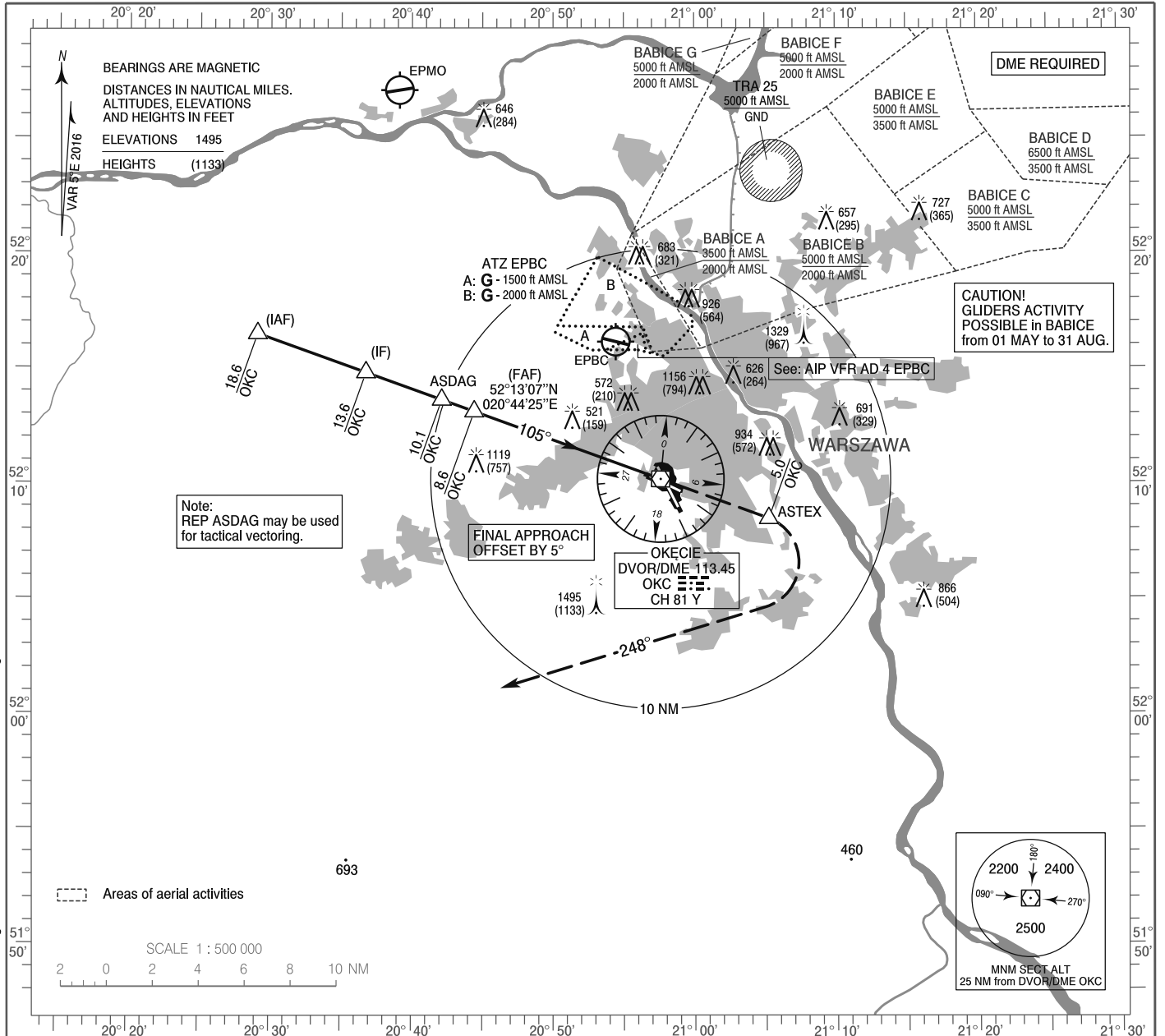


**INSTRUMENT
APPROACH
CHART - ICAO**

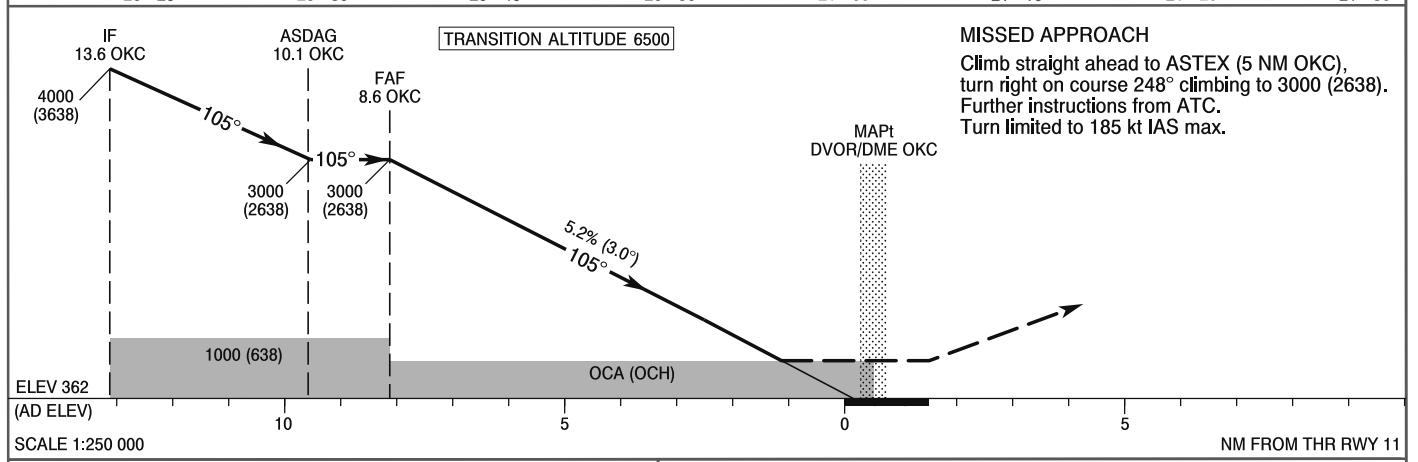
AERODROME ELEV 362 ft
THR RWY 11 ELEV 362 ft
HEIGHTS RELATED TO AD ELEV

Warszawa APPROACH	128.805	Warszawa DIRECTOR	129.380
ATIS	125.055	Okecie TOWER	118.305
	120.455	Okecie GROUND	121.905

**WARSAW CHOPIN AIRPORT
VOR
RWY 11 (CAT A/B/C/D)**



Correction: Circling withdrawn. Obstacles. FREQ. Editorial changes.



Cat. of ACFT	OCA (OCH)				Distance FAF - MAPt 8.6 NM							
	A	B	C	D	Speed	kt	80	100	120	140	160	180
Straight - in	770 (408)	770 (408)	770 (408)	770 (408)	Time	min : s	6 : 28	5 : 11	4 : 19	3 : 42	3 : 14	2 : 53
					Rate of descent	ft / min	430	540	640	750	850	960
Final approach distance/altitude (height)												
Circling approaches are prohibited					Distance		8	6	4	2		
					Altitude (height)		2810 (2448)	2170 (1808)	1530 (1168)	890 (528)		

INSTRUMENT
APPROACH
CHART - ICAOWARSAW CHOPIN AIRPORT
VOR
RWY 11 (CAT A/B/C/D)

FIX / POINT	LATITUDE	LONGITUDE	FIX FORMATION	
IAF	52°16'29.4"N	020°29'06.0"E	290.00° GEO (285° MAG) DVOR OKC	18.63 NM DME OKC
IF	52°14'48.6"N	020°36'45.8"E	290.00° GEO (285° MAG) DVOR OKC	13.63 NM DME OKC
REP ASDAG	52°13'37.6"N	020°42'07.5"E	290.00° GEO (285° MAG) DVOR OKC	10.13 NM DME OKC
FAF	52°13'07.2"N	020°44'25.3"E	290.00° GEO (285° MAG) DVOR OKC	8.63 NM DME OKC
MAP _t DVOR/DME OKC	52°10'11.1"N	020°57'36.2"E		
REP ASTEX	52°08'28.4"N	021°05'13.8"E	110.00° GEO (105° MAG) DVOR OKC	5.00 NM DME OKC
Final approach descent angle: 3.00°				