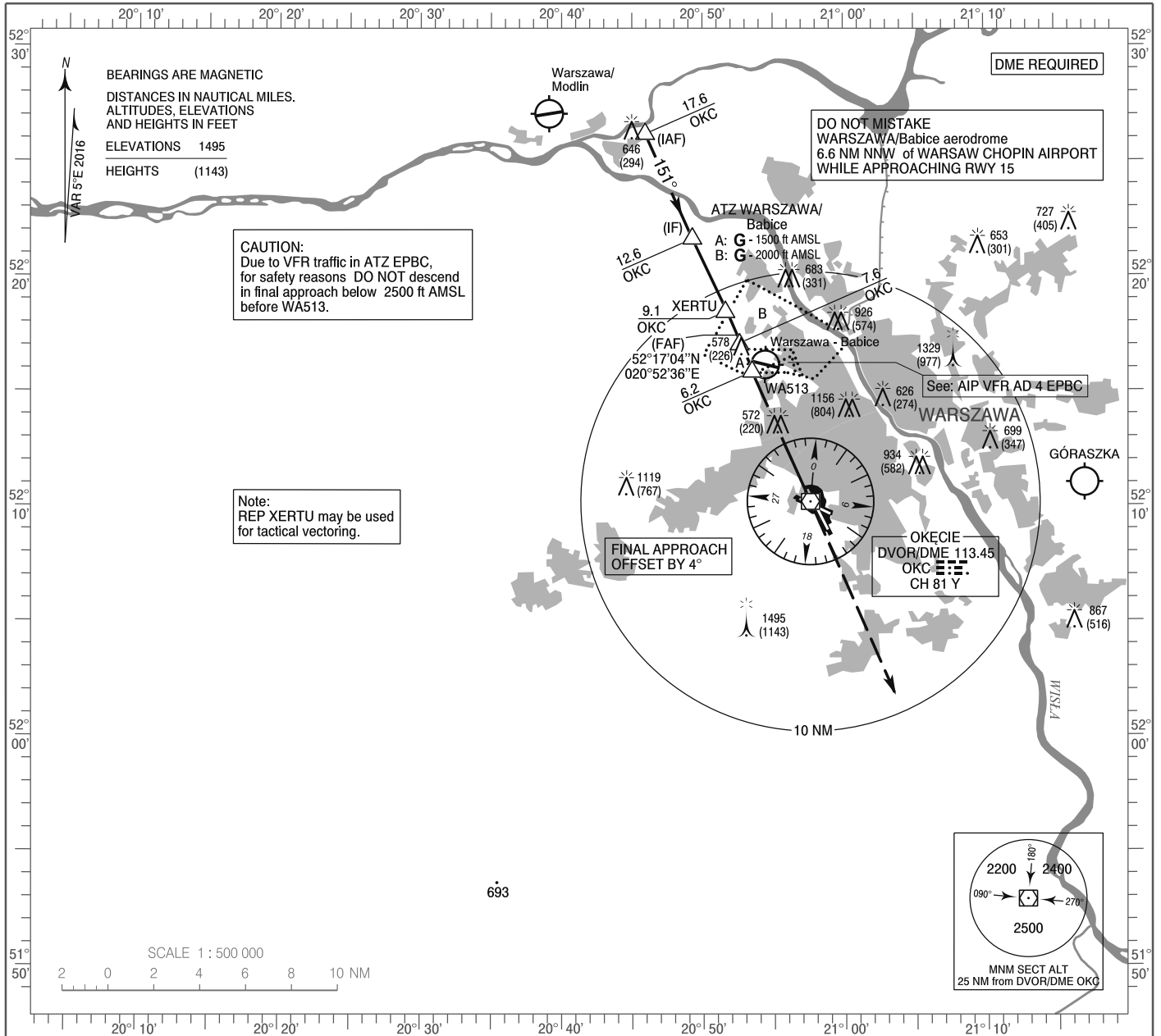


**INSTRUMENT
APPROACH
CHART - ICAO**

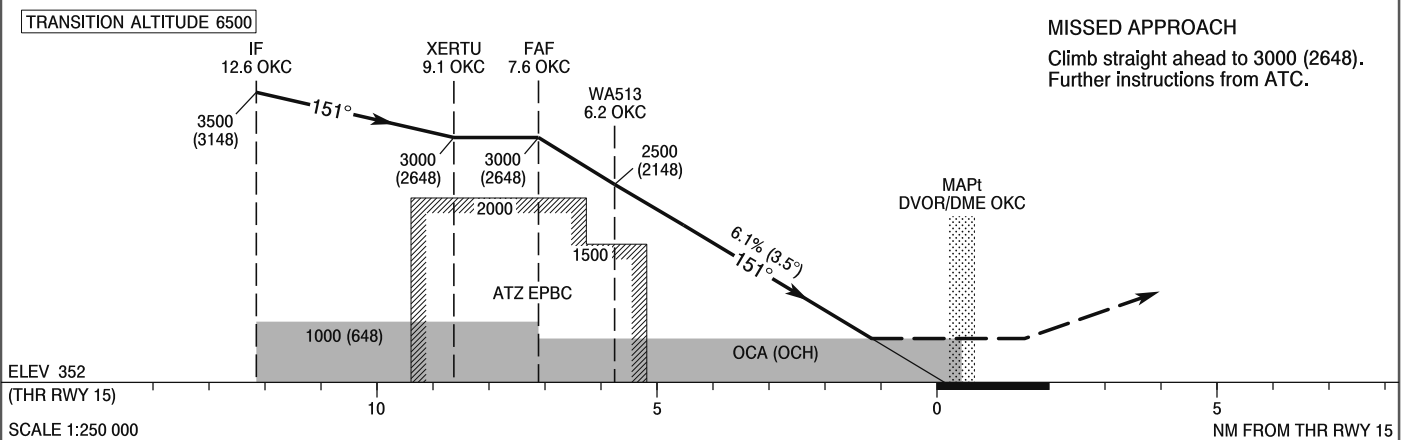
AERODROME ELEV 362 ft
THR RWY 15 ELEV 352 ft
HEIGHTS RELATED TO THR RWY 15

Warszawa APPROACH	128.800	Warszawa DIRECTOR	129.375
ATIS	125.050	Okecie TOWER	118.300
	120.450	Okecie GROUND	121.900

**WARSAW CHOPIN AIRPORT
VOR
RWY 15 (CAT A/B/C/D)**



Correction: Obstacle. VAR.



OCA (OCH)					Distance FAF - MAPt 7.6 NM							
Cat. of ACFT	A	B	C	D	Speed	kt	80	100	120	140	160	180
Straight - in	830 (478)	830 (478)	830 (478)	830 (478)	Time	min : s	5 : 40	4 : 32	3 : 47	3 : 14	2 : 50	2 : 31
					Rate of descent	ft / min	500	620	750	870	990	1120
					Final approach distance/altitude (height)							
Circling (OCH AAL)*	830 (468)	860 (498)	970 (608)	1050 (688)	Distance		6	5	4	3		
*For circling restrictions see overleaf					Altitude (height)		2430 (2078)	2060 (1708)	1690 (1338)	1320 (968)		

**INSTRUMENT
APPROACH
CHART - ICAO**

**WARSAW CHOPIN AIRPORT
VOR
RWY 15 (CAT A/B/C/D)**

FIX / POINT	LATITUDE	LONGITUDE	FIX FORMATION	
IAF	52°26'11.5"N	020°45'56.0"E	336.00° GEO (331° MAG) DVOR OKC	17.56 NM DME OKC
IF	52°21'38.0"N	020°49'16.3"E	336.00° GEO (331° MAG) DVOR OKC	12.56 NM DME OKC
REP XERTU	52°18'26.3"N	020°51'36.3"E	336.00° GEO (331° MAG) DVOR OKC	9.05 NM DME OKC
FAF	52°17'04.2"N	020°52'36.2"E	336.00° GEO (331° MAG) DVOR OKC	7.55 NM DME OKC
WA513	52°15'50.4"N	020°53'29.9"E	336.00° GEO (331° MAG) DVOR OKC	6.20 NM DME OKC
MAPt DVOR/DME OKC	52°10'11.1"N	020°57'36.2"E		
Final approach descent angle: 3.50°				

