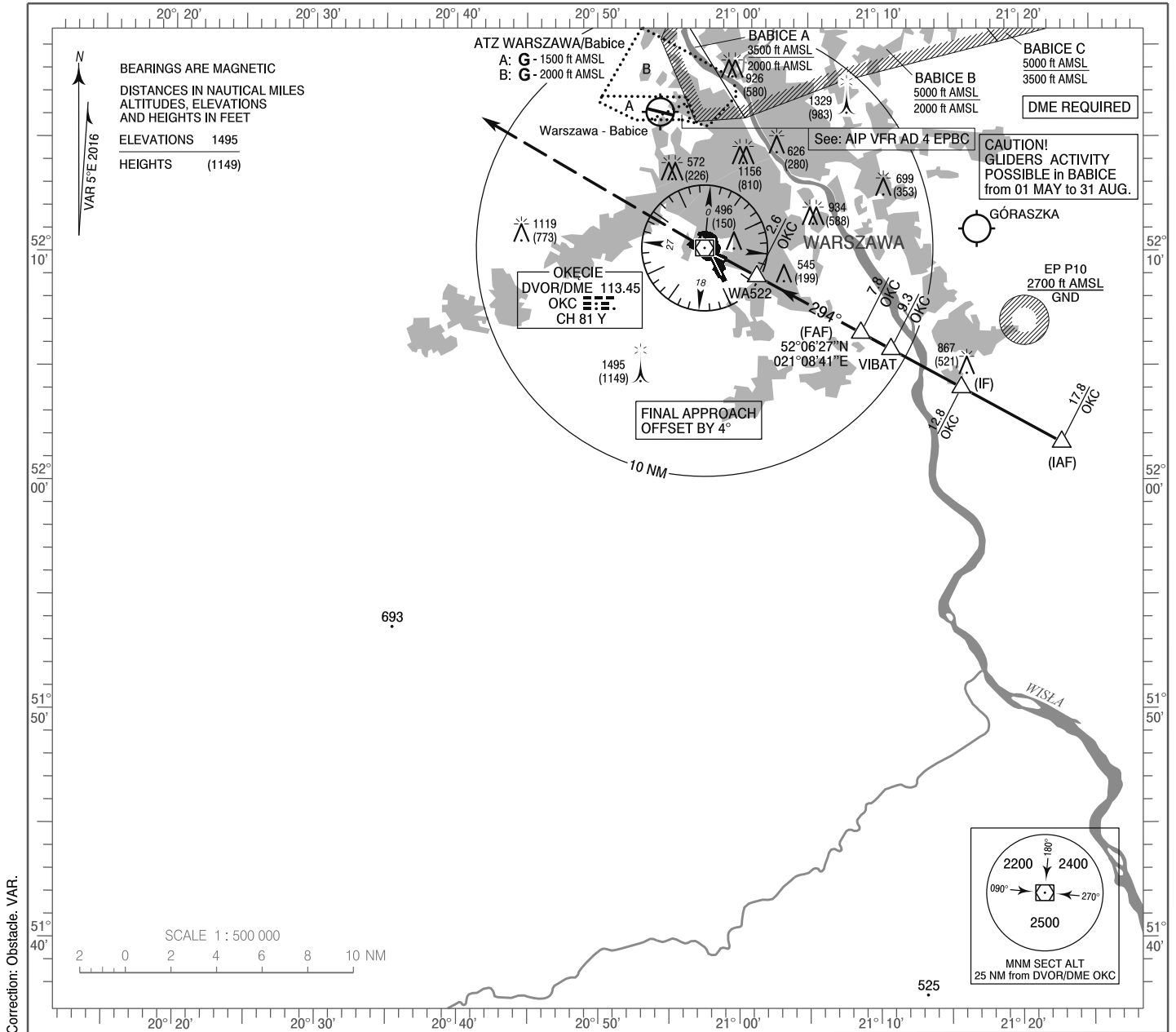


**INSTRUMENT  
APPROACH  
CHART - ICAO**

AERODROME ELEV 362 ft  
THR RWY 29 ELEV 346 ft  
HEIGHTS RELATED TO THR RWY 29

|                   |         |                   |         |
|-------------------|---------|-------------------|---------|
| Warszawa APPROACH | 128.800 | Warszawa DIRECTOR | 129.375 |
| ATIS              | 125.050 | Okecie TOWER      | 118.300 |
|                   | 120.450 | Okecie GROUND     | 121.900 |

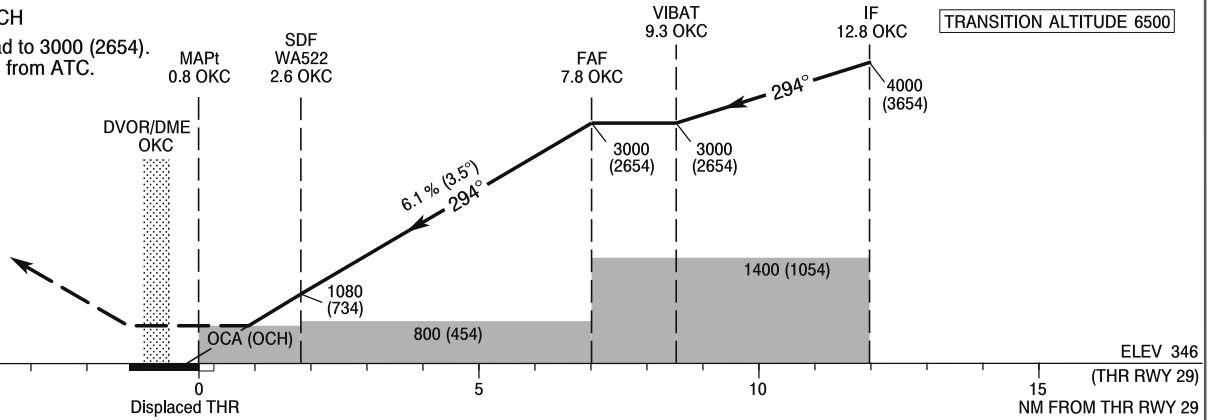
**WARSAW CHOPIN AIRPORT  
VOR  
RWY 29 (CAT A/B/C/D)**



Correction: Obstacle. VAR.

**MISSED APPROACH**

Climb straight ahead to 3000 (2654).  
Further instructions from ATC.



SCALE 1:250 000

| Cat. of ACFT                            | OCA (OCH)                      |           |           |            | Distance FAF - MAPt 7.0 NM                |          |             |             |             |            |        |        |
|---|--------------------------------|-----------|-----------|------------|---|----------|-------------|-------------|-------------|------------|--------|--------|
|   | A                              | B         | C         | D          | Speed                                     | kt       | 80          | 100         | 120         | 140        | 160    | 180    |
| Straight - in                           | 750 (404)                      | 750 (404) | 750 (404) | 750 (404)  | Time                                      | min : s  | 5 : 16      | 4 : 13      | 3 : 31      | 3 : 01     | 2 : 38 | 2 : 21 |
|   | When stepdown fix not received |           |           |            | Rate of descent                           | ft / min | 500         | 620         | 750         | 870        | 990    | 1120   |
| Circling (OCH AAL)*                     | 800 (454)                      | 800 (454) | 800 (454) | 800 (454)  | Final approach distance/altitude (height) |          |             |             |             |            |        |        |
|   | 800 (438)                      | 860 (498) | 970 (608) | 1050 (688) | Distance                                  |          | 6           | 5           | 4           | 3          |        |        |
| *For circling restrictions see overleaf |                                |           |           |            | Altitude (height)                         |          | 2340 (1994) | 1970 (1624) | 1600 (1254) | 1230 (884) |        |        |

**INSTRUMENT  
APPROACH  
CHART - ICAO**

**WARSAW CHOPIN AIRPORT  
VOR  
RWY 29 (CAT A/B/C/D)**

| FIX / POINT                         | LATITUDE     | LONGITUDE     | FIX FORMATION                         |                     |
|-------------------------------------|--------------|---------------|---------------------------------------|---------------------|
| IAF                                 | 52°01'38.4"N | 021°22'53.8"E | 118.58° GEO<br>(114° MAG)<br>DVOR OKC | 17.79 NM<br>DME OKC |
| IF                                  | 52°04'03.0"N | 021°15'48.2"E | 118.58° GEO<br>(114° MAG)<br>DVOR OKC | 12.79 NM<br>DME OKC |
| REP VIBAT                           | 52°05'44.2"N | 021°10'49.5"E | 118.58° GEO<br>(114° MAG)<br>DVOR OKC | 9.29 NM<br>DME OKC  |
| FAF                                 | 52°06'27.4"N | 021°08'41.5"E | 118.58° GEO<br>(114° MAG)<br>DVOR OKC | 7.79 NM<br>DME OKC  |
| SDF<br>WA522                        | 52°08'56.5"N | 021°01'18.6"E | 118.58° GEO<br>(114° MAG)<br>DVOR OKC | 2.60 NM<br>DME OKC  |
| MAPt                                | 52°09'49.3"N | 020°58'41.2"E | 118.58° GEO<br>(114° MAG)<br>DVOR OKC | 0.76 NM<br>DME OKC  |
| Final approach descent angle: 3.50° |              |               |                                       |                     |

