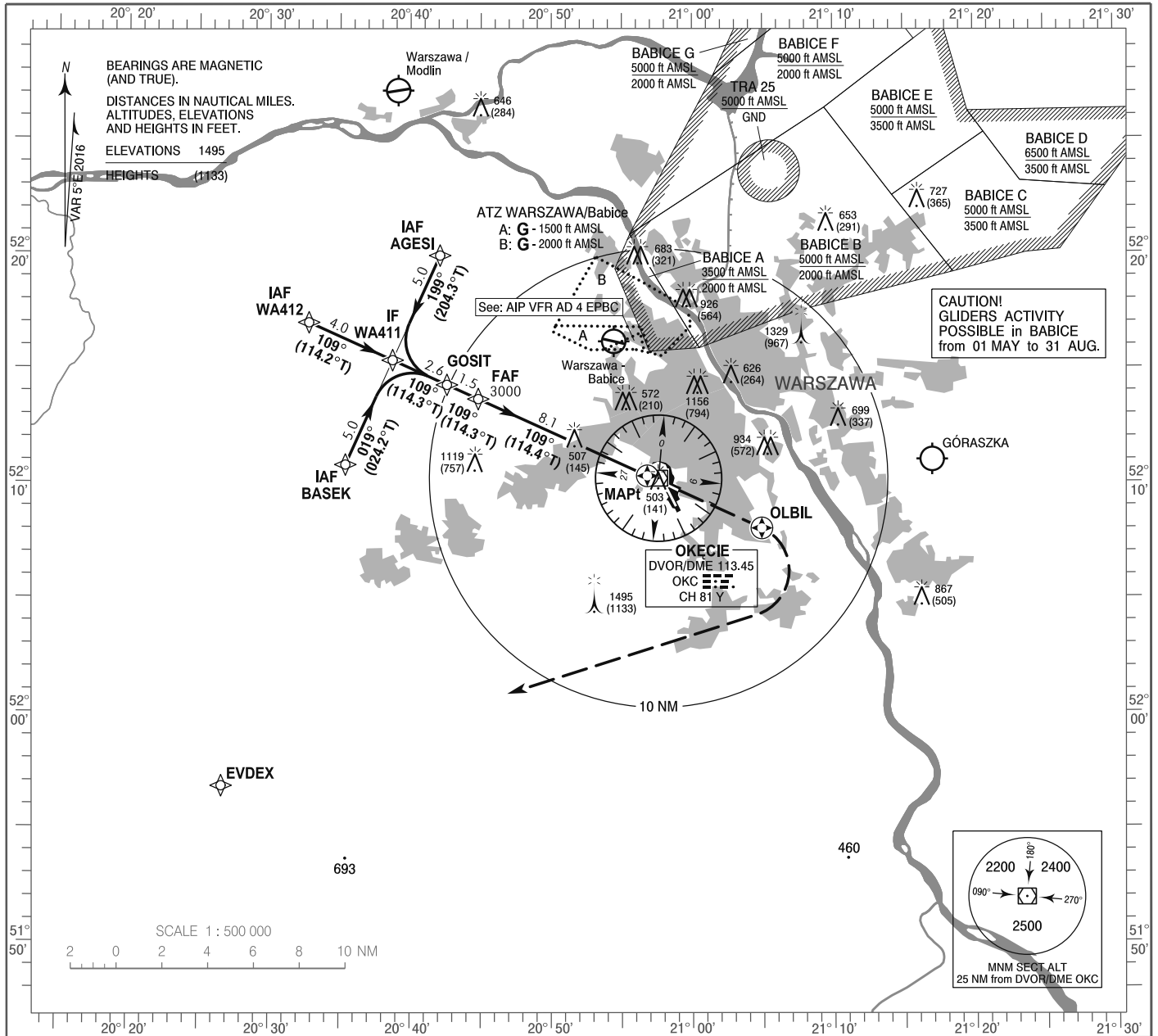


**INSTRUMENT  
APPROACH  
CHART - ICAO**

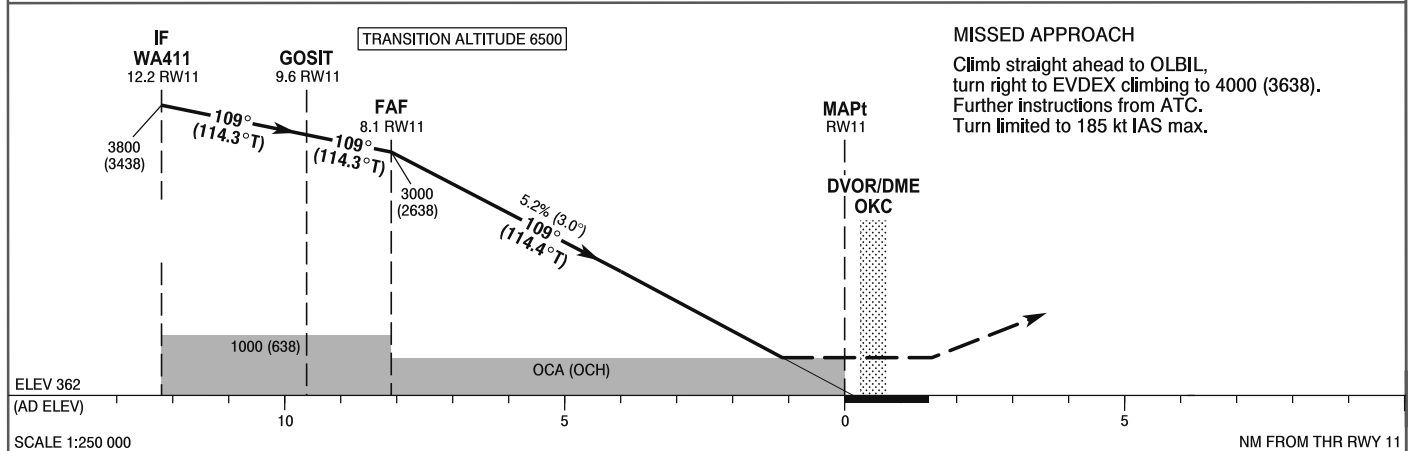
AERODROME ELEV 362 ft  
THR RWY 11 ELEV 362 ft  
HEIGHTS RELATED TO AD ELEV

Warszawa APPROACH	128.800	Warszawa DIRECTOR	129.375
ATIS	125.050	Okęcie TOWER	118.300
	120.450	Okęcie GROUND	121.900

**WARSAW CHOPIN AIRPORT  
RNAV (GNSS)  
RWY 11 (CAT A/B/C/D)**



Correction: BABICE AREA. Obstacle. VAR.



OCA (OCH)					Distance FAF - MAPt 8.1 NM								
Cat. of ACFT	A	B	C	D	Speed	kt	80	100	120	140	160	180	
Straight - in	LNAV	760 (398)	760 (398)	760 (398)	760 (398)	Time	min : s	6:04	4:52	4:03	3:28	3:02	2:42
						Rate of descent	ft / min	430	540	640	750	850	960
Final approach distance/altitude (height)													
Circling*		860 (498)	880 (518)	980 (618)	1060 (698)	Distance		8	6	4	2		
						Altitude (height)		2960 (2598)	2330 (1968)	1690 (1328)	1050 (688)		

\*For circling restrictions see overleaf

