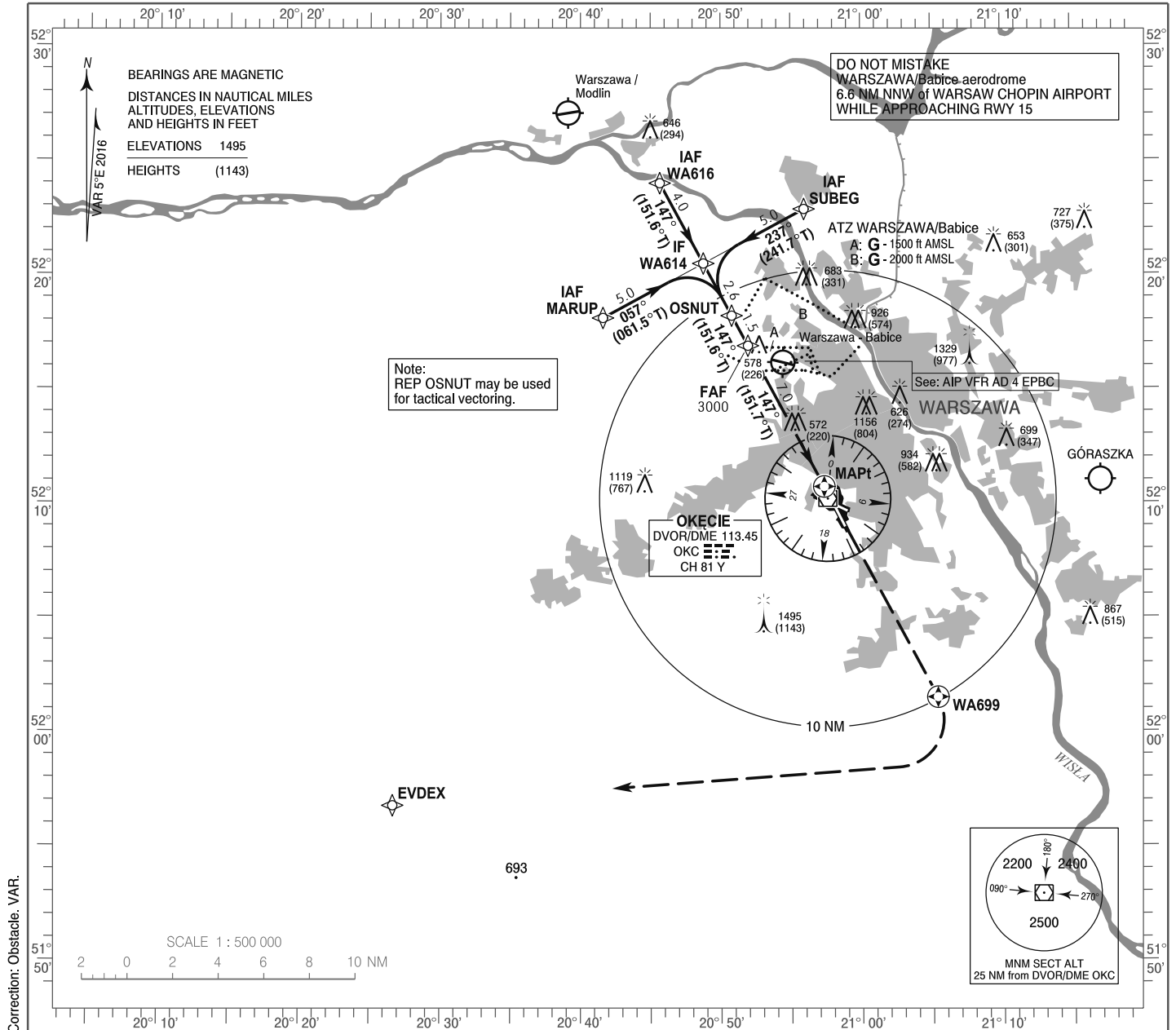


**INSTRUMENT
APPROACH
CHART - ICAO**

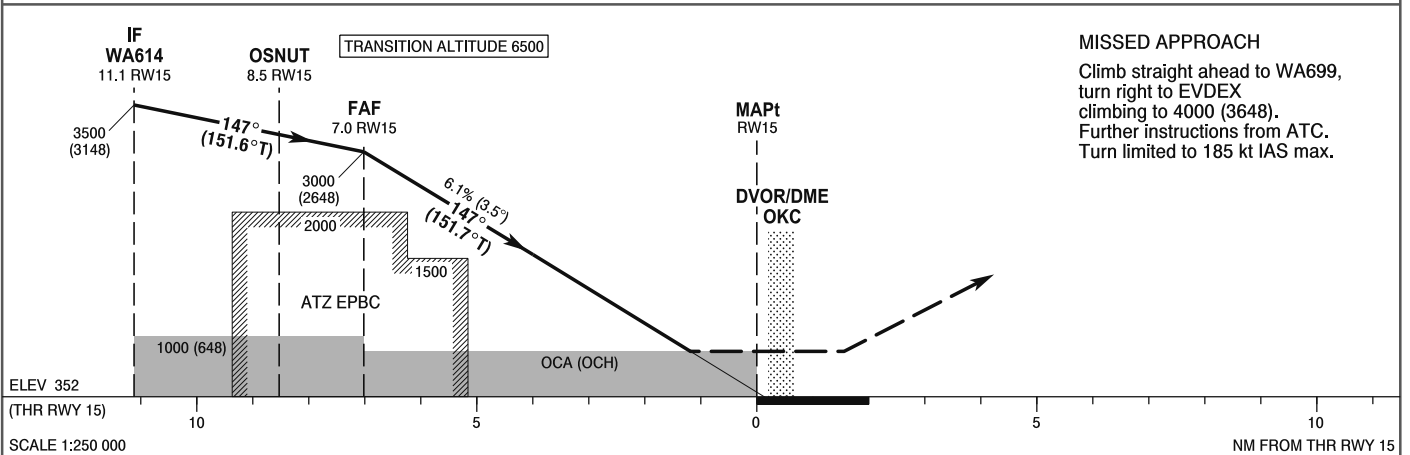
AERODROME ELEV 362 ft
THR RWY 15 ELEV 352 ft
HEIGHTS RELATED TO THR RWY 15

Warszawa APPROACH	128.800	Warszawa DIRECTOR	129.375
ATIS	125.050	Okecie TOWER	118.300
	120.450	Okecie GROUND	121.900

**WARSAW CHOPIN AIRPORT
RNAV (GNSS)
RWY 15 (CAT A/B/C/D)**



Correction: Obstacle, VAR.



OCA (OCH)					Distance FAF MAPt - 7.0 NM							
Cat. of ACFT	LNAV	A	B	C	D	Speed	kt	80	100	120	140	160
		830 (478)	830 (478)	830 (478)	830 (478)	Time	min : s	5:15	4:12	3:30	3:00	2:38
Straight - in						Rate of descent	ft / min	500	620	750	870	990
						Final approach distance/altitude (height)						
Circling (OCH AAL)*		830 (468)	860 (498)	970 (608)	1060 (698)	Distance		8	6	4	2	
						Altitude (height)		3370 (3018)	2630 (2278)	1890 (1538)	1150 (798)	

*For circling restrictions see overleaf

