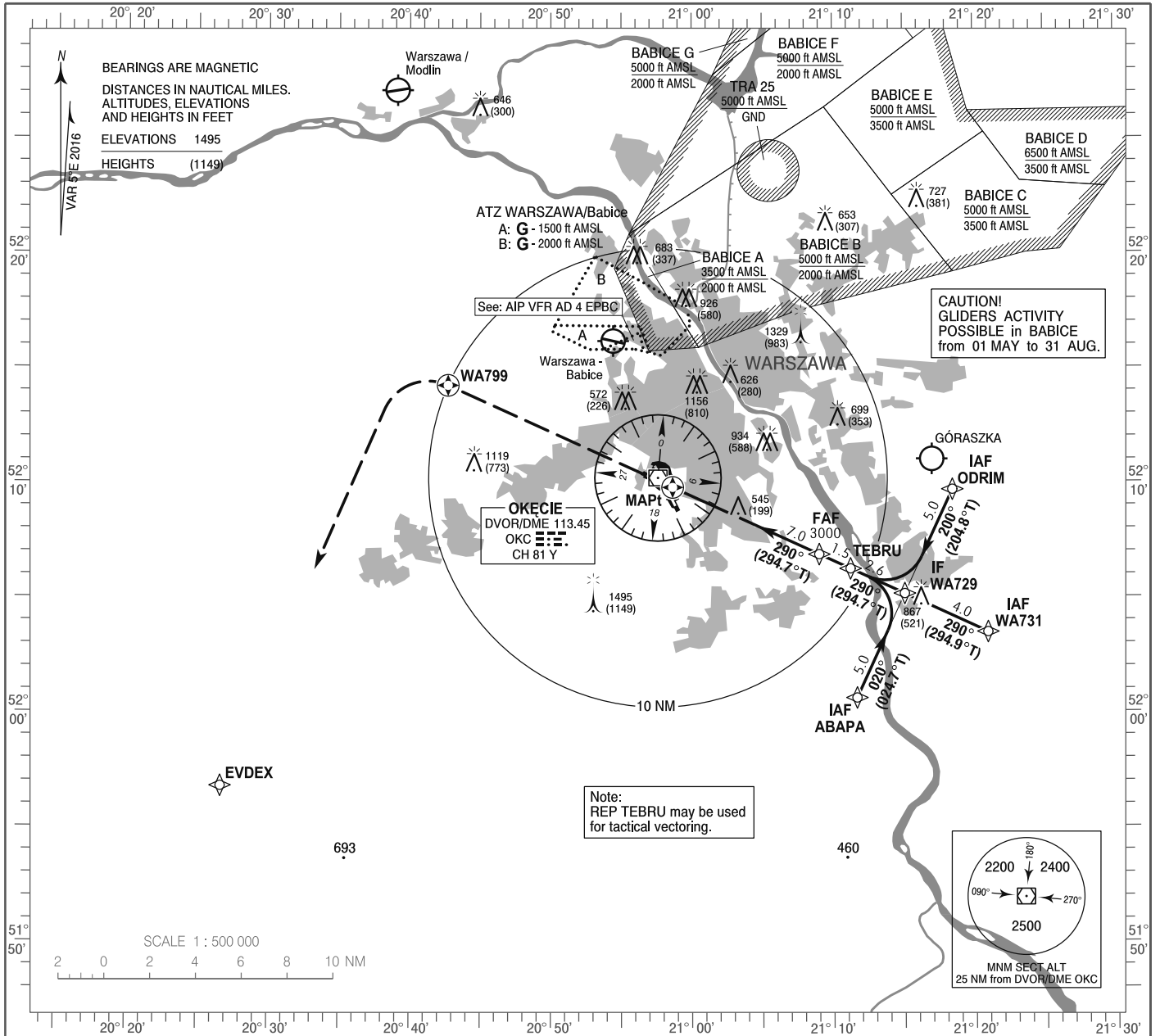


**INSTRUMENT
APPROACH
CHART - ICAO**

AERODROME ELEV 362 ft
THR RWY 29 ELEV 346 ft
HEIGHTS RELATED TO THR RWY 29

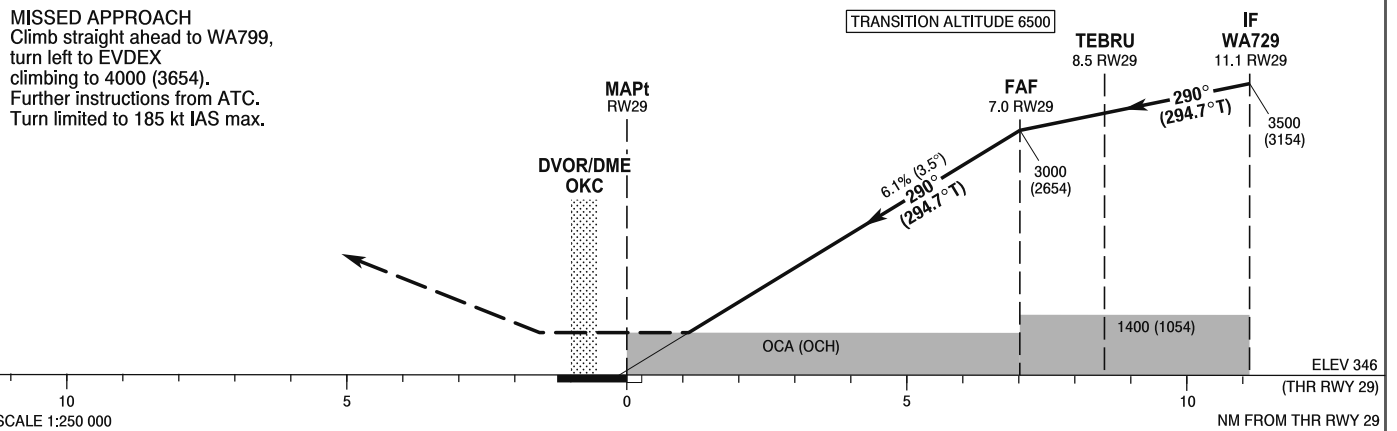
Warszawa APPROACH	128.800	Warszawa DIRECTOR	129.375
ATIS	125.050	Okęcie TOWER	118.300
	120.450	Okęcie GROUND	121.900

**WARSAW CHOPIN AIRPORT
RNAV (GNSS)
RWY 29 (CAT A/B/C/D)**



Correction: BABICE AREA. Obstacle. VAR.

MISSED APPROACH
Climb straight ahead to WA799,
turn left to EVDEX
climbing to 4000 (3654).
Further instructions from ATC.
Turn limited to 185 kt IAS max.



OCA (OCH)					Distance FAF - MAPt 7.0 NM							
Cat. of ACFT	A	B	C	D	Speed	kt	80	100	120	140	160	
Straight - in	LNAV	800 (454)	800 (454)	800 (454)	800 (454)	Time	min : s	5:15	4:12	3:30	3:00	2:38
						Rate of descent	ft / min	500	620	750	870	990
Final approach distance/altitude (height)												
Circling (OCH AAL)*	810 (448)	860 (498)	970 (608)	1060 (698)	Distance		6	5	4	3		
					Altitude (height)		2620 (2274)	2250 (1904)	1880 (1534)	1510 (1164)		

*For circling restrictions see overleaf

