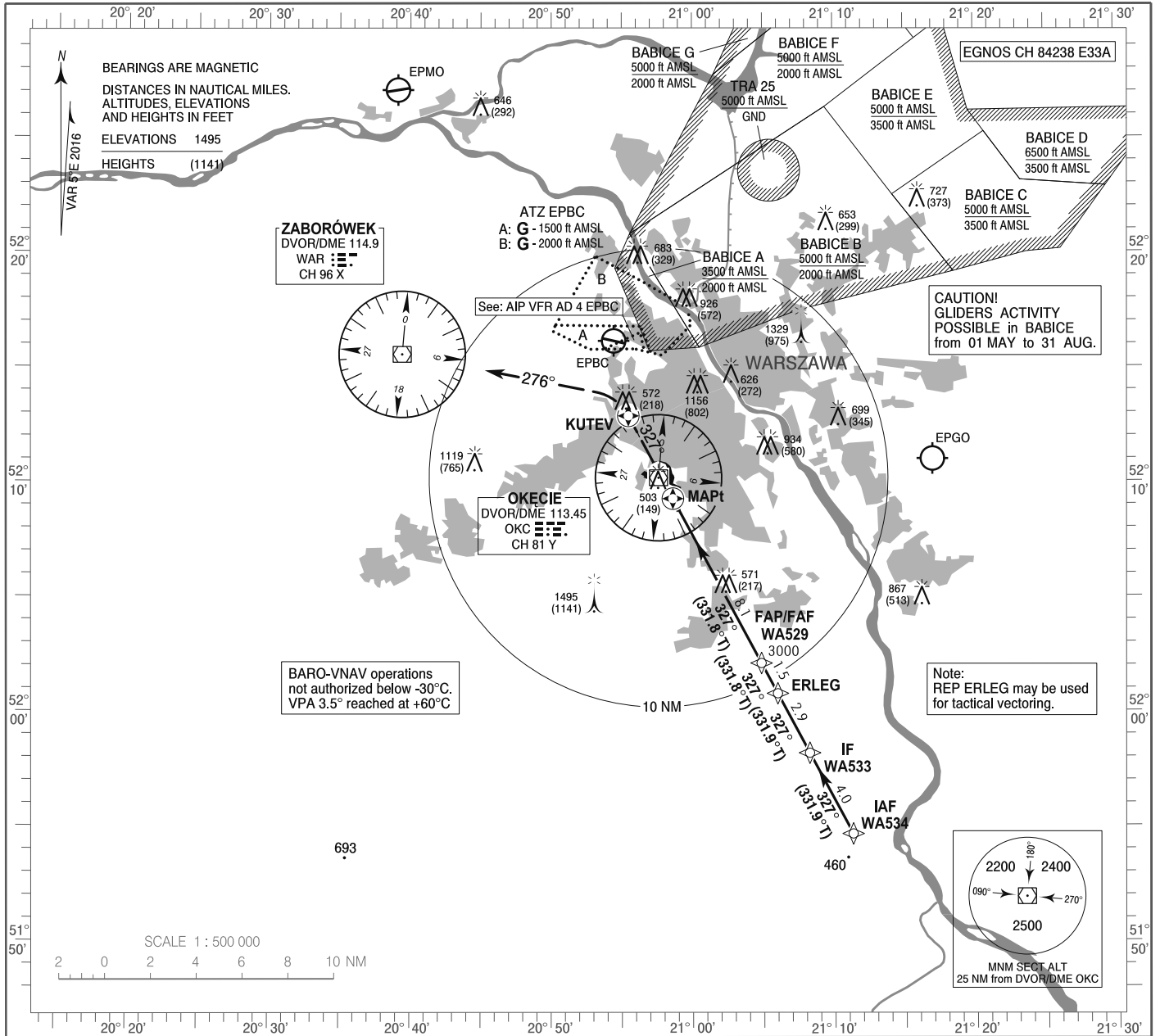


**INSTRUMENT
APPROACH
CHART - ICAO**

AERODROME ELEV 362 ft
THR RWY 33 ELEV 354 ft
HEIGHTS RELATED TO THR RWY 33

Warszawa APPROACH	128.800	Warszawa DIRECTOR	129.375
ATIS	125.050	Okecie TOWER	118.300
	120.450	Okecie GROUND	121.900

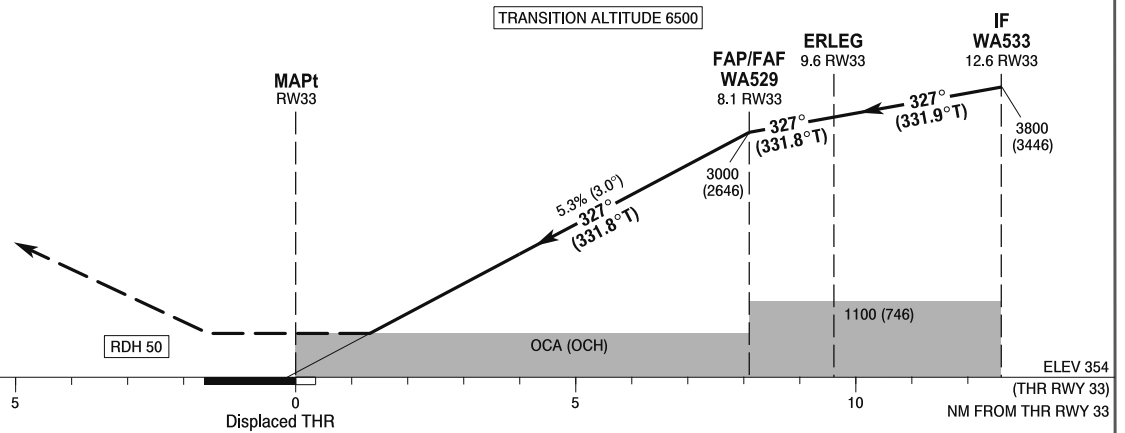
**WARSAW CHOPIN AIRPORT
RNAV (GNSS)
RWY 33 (CAT A/B/C/D)**



Correction: LNAV/VNAV and LPV minima added. Tables. Initial segment. MA description.

MISSED APPROACH

Climb straight ahead on course 327° to KUTEV, turn left DCT DVOR/DME WAR climbing to 3000 (2646). Further instructions from ATC. Turn limited to 185 kt IAS max only if KUTEV crossed below 2000 (1646).



OCA (OCH)					Distance FAF - MAPt 8.1 NM							
Cat. of ACFT	A	B	C	D	Speed	kt	80	100	120	140	160	
Straight - in	LNAV	820 (466)	820 (466)	820 (466)	820 (466)	Time	min : s	6:07	4:53	4:05	3:30	3:04
	LNAV / VNAV	640 (286)	650 (296)	660 (306)	670 (316)	Rate of descent	ft / min	420	530	630	740	850
	LPV	554 (200)	566 (212)	574 (220)	585 (231)		Final approach distance/altitude (height)					
Circling (OCH AAL)*	820 (458)	860 (498)	970 (608)	1060 (698)	Distance		8	6	4	2		
*For circling restrictions see overleaf					Altitude (height)		2950 (2596)	2320 (1966)	1690 (1336)	1070 (716)		