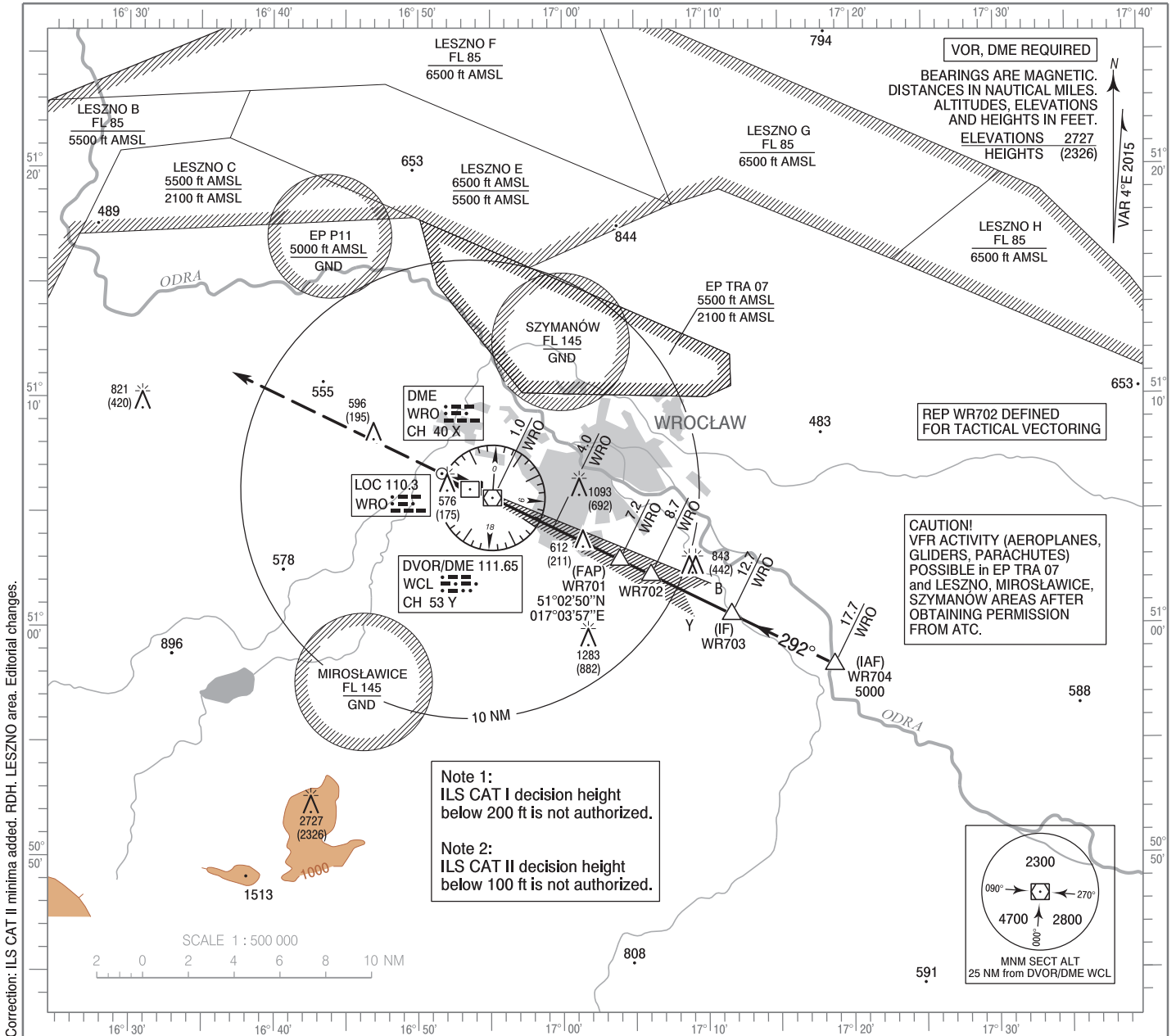


**INSTRUMENT
APPROACH
CHART - ICAO**

AERODROME ELEV 406 ft
THR RWY 29 ELEV 401 ft
HEIGHTS RELATED TO THR RWY 29

Poznań APPROACH 127.225
Wrocław TOWER 120.250
ATIS 124.325

**Wrocław - Strachowice
ILS CAT II or LOC
RWY 29 (CAT A/B/C/D)**

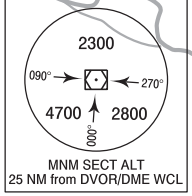


Correction: ILS CAT II minima added. RDH. LESZNO area. Editorial changes.

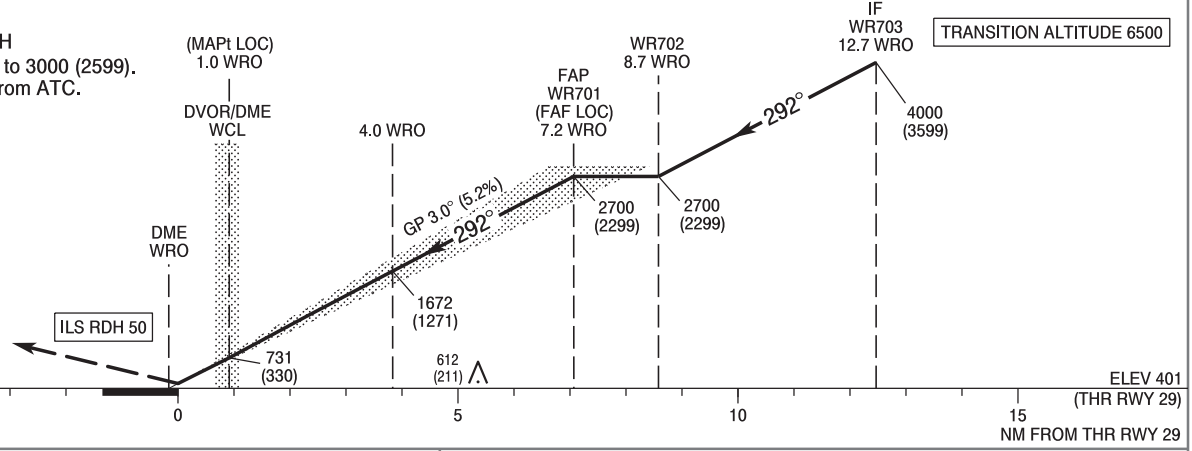
Note 1:
ILS CAT I decision height
below 200 ft is not authorized.

Note 2:
ILS CAT II decision height
below 100 ft is not authorized.

CAUTION!
VFR ACTIVITY (AEROPLANES,
GLIDERS, PARACHUTES)
POSSIBLE in EP TRA 07
and LESZNO, MIROSLAWICE,
SZYMANÓW AREAS AFTER
OBTAINING PERMISSION
FROM ATC.



MISSED APPROACH
Climb straight ahead to 3000 (2599).
Further instructions from ATC.



SCALE 1 : 250 000

Cat. of ACFT	OCA (OCH)				Distance FAF - MAPt 6.2 NM								
	A	B	C	D	Speed	kt	80	100	120	140	160	180	
Straight - in	Cat. I	565 (164)	577 (176)	585 (184)	596 (195)	Time	min : s	4 : 38	3 : 43	3 : 06	2 : 39	2 : 19	2 : 04
	Cat. II	477 (76)	494 (93)	506 (105)	520 (119)	Rate of descent	ft / min	430	540	640	750	850	960
	LOC	860 (460)	860 (460)	860 (460)	860 (460)		Final approach distance / altitude (height)						
Circling* (OCH AAL)	880 (474)	900 (494)	1000 (594)	1100 (694)	Distance	6	5	4	3	2			
*Circling south of aerodrome only.					Altitude (height)	2310 (1909)	1990 (1589)	1680 (1279)	1360 (959)	1040 (639)			

**INSTRUMENT
APPROACH
CHART - ICAO**

**Wrocław - Strachowice
ILS CAT II or LOC
RWY 29 (CAT A/B/C/D)**

FIX / POINT	LATITUDE	LONGITUDE	FIX FORMATION	
IAF WR704	50°58'15.0"N	017°18'44.8"E	296.28° GEO (292° MAG) LOC WRO	17.65 NM DME WRO
IF WR703	51°00'27.4"N	017°11'38.9"E	296.19° GEO (292° MAG) LOC WRO	12.65 NM DME WRO
WR702	51°02'10.8"N	017°06'05.0"E	296.11° GEO (292° MAG) LOC WRO	8.74 NM DME WRO
FAP WR701 (FAF LOC)	51°02'50.4"N	017°03'56.8"E	296.09° GEO (292° MAG) LOC WRO	7.23 NM DME WRO
MAP _t (LOC)	51°05'33.2"N	016°55'07.9"E	295.97° GEO (292° MAG) LOC WRO	1.05 NM DME WRO
Final approach descent angle: 3.00°				