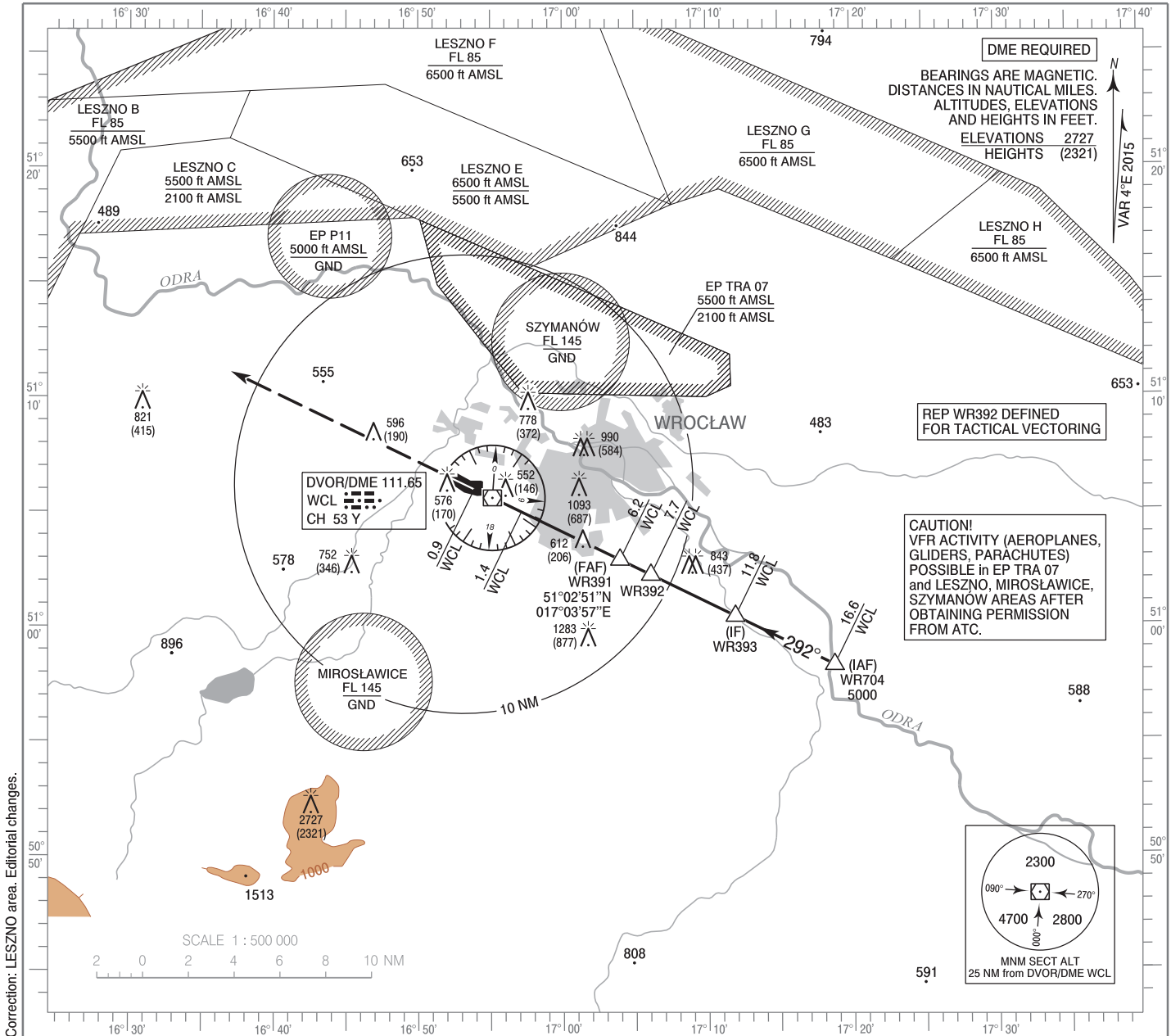


**INSTRUMENT
APPROACH
CHART - ICAO**

AERODROME ELEV 406 ft
THR RWY 29 ELEV 401 ft
HEIGHTS RELATED TO AD ELEV

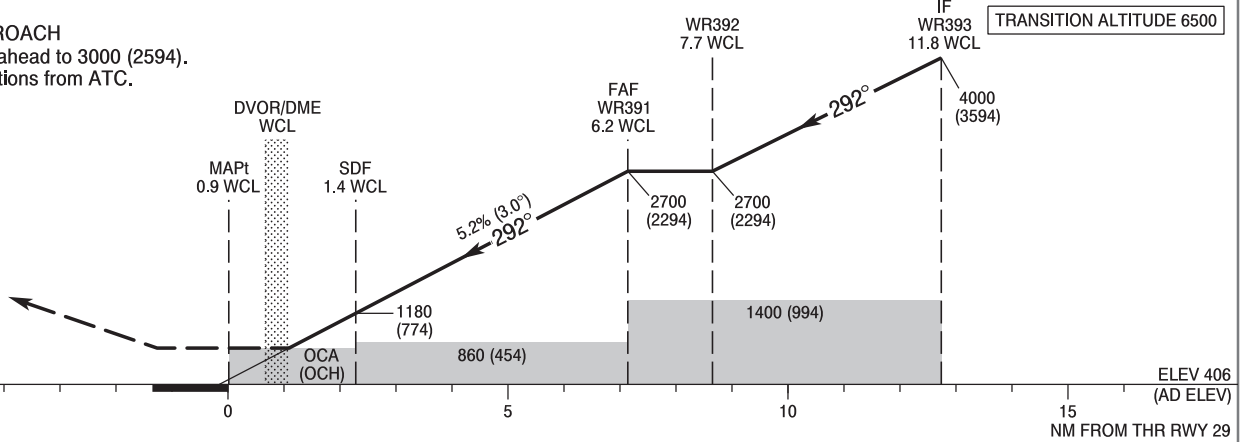
Poznań APPROACH 127.225
Wrocław TOWER 120.250
ATIS 124.325

**Wrocław - Strachowice
VOR z
RWY 29 (CAT A/B/C/D)**



Correction: LESZNO area. Editorial changes.

MISSED APPROACH
Climb straight ahead to 3000 (2594).
Further instructions from ATC.



SCALE 1 : 250 000

Cat. of ACFT	OCA (OCH)				Speed	kt	Distance FAF - MAPt 5.3 NM					
	A	B	C	D			80	100	120	140	160	180
Straight - in	800 (394)	800 (394)	800 (394)	800 (394)	Time	min : s	5 : 18	4 : 14	3 : 32	3 : 02	2 : 39	2 : 21
	When stepdown fix not received				Rate of descent	ft / min	425	531	637	743	849	955
Circling*	880 (474)	900 (494)	1000 (594)	1100 (694)	Final approach distance / altitude (height)							
	Distance	6	5	4	3	Altitude (height)	2650 (2244)	2340 (1934)	2010 (1604)	1690 (1284)		

*Circling south of aerodrome only.

**INSTRUMENT
APPROACH
CHART - ICAO**

**WROCLAW / Strachowice
VOR z
RWY 29 (CAT A/B/C/D)**

FIX / POINT	LATITUDE	LONGITUDE	FIX FORMATION	
IAF WR704	50°58'15.0"N	017°18'44.8"E	116.00° GEO (112° MAG) DVOR WCL	16.61 NM DME WCL
IF WR393	51°00'22.8"N	017°11'54.5"E	116.00° GEO (112° MAG) DVOR WCL	11.79 NM DME WCL
WR392	51°02'11.2"N	017°06'04.8"E	116.00° GEO (112° MAG) DVOR WCL	7.69 NM DME WCL
FAF WR391	51°02'50.8"N	017°03'56.8"E	116.00° GEO (112° MAG) DVOR WCL	6.19 NM DME WCL
SDF	51°04'56.8"N	016°57'07.9"E	116.00° GEO (112° MAG) DVOR WCL	1.40 NM DME WCL
MAPt	51°05'56.7"N	016°53'53.0"E	296.00° GEO (292° MAG) DVOR WCL	0.88 NM DME WCL
Final approach descent angle: 3.00°				