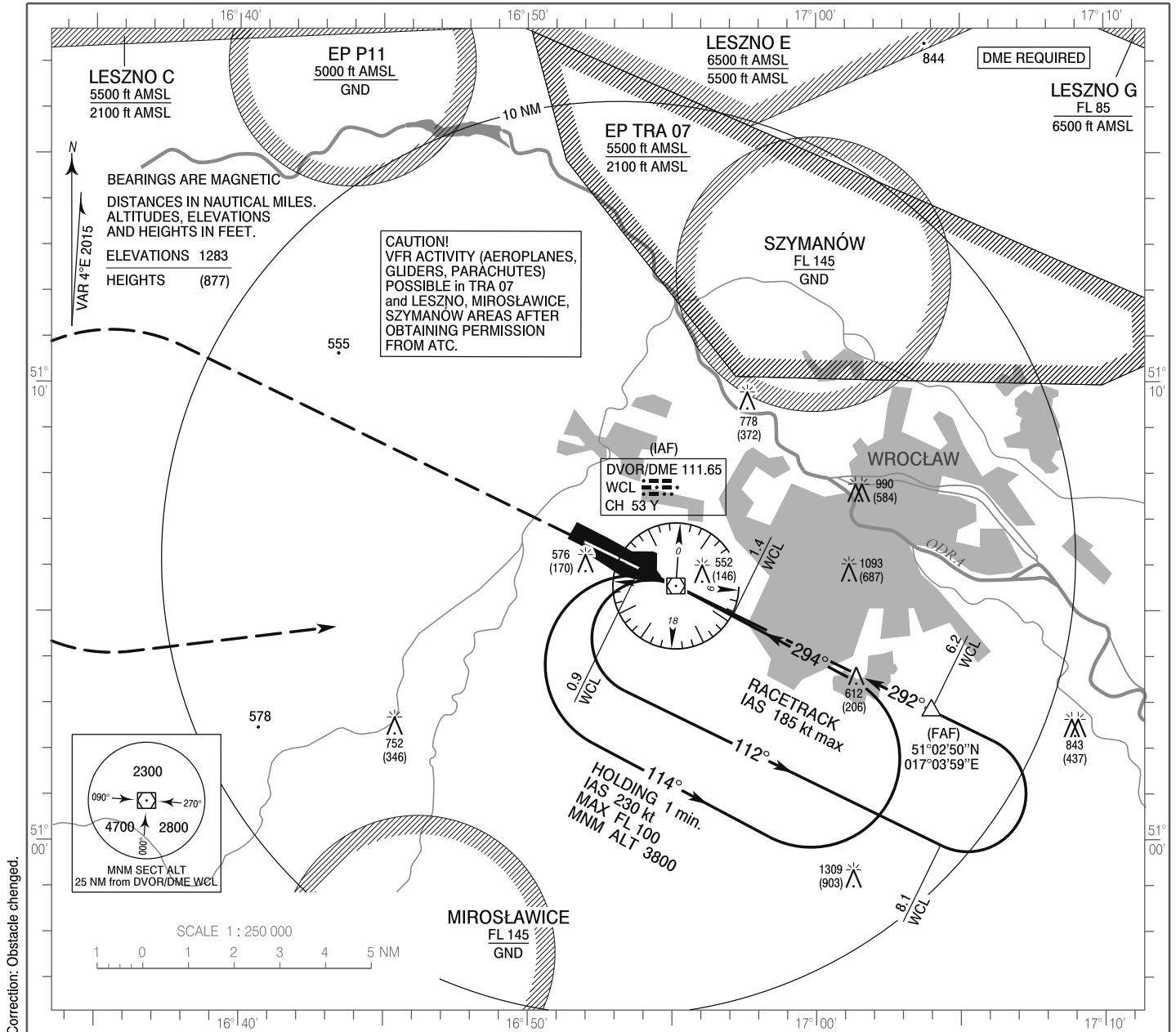


**INSTRUMENT  
APPROACH  
CHART - ICAO**

AERODROME ELEV 406 ft  
THR RWY 29 ELEV 401 ft  
HEIGHTS RELATED TO AD ELEV

Poznań APPROACH 127.225  
Wrocław TOWER 120.250  
ATIS 124.325

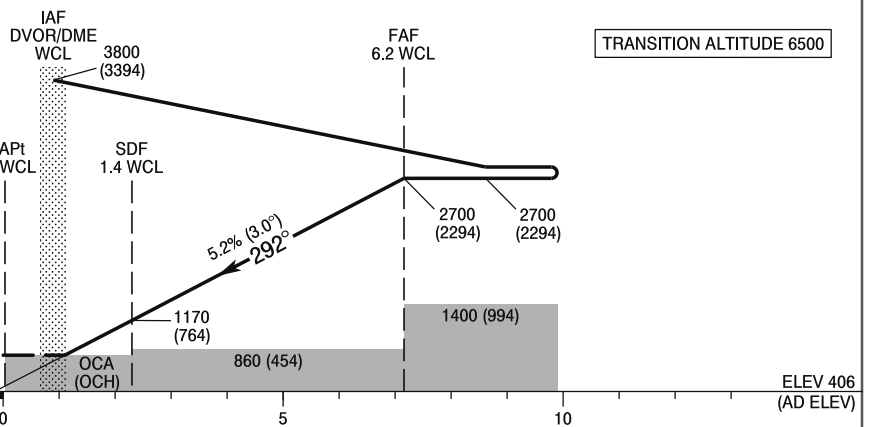
**Wrocław - Strachowice  
VOR y  
RWY 29 (CAT A/B/C/D)**



Correction: Obstacle changed.

**MISSED APPROACH**

Climb straight ahead to 2300 (1894).  
Further instructions from ATC.  
If no instructions issued, after reaching 2300 (1894),  
turn left to DVOR/DME WCL climbing to 2700 (2294).  
Turn limited to 240 kt IAS max.



OCA (OCH)					Distance FAF - MAPt 5.3 NM							
Cat. of ACFT	A	B	C	D	Speed	kt	80	100	120	140	160	180
Straight - in	800 (394)	800 (394)	800 (394)	800 (394)	Time	min : s	5 : 19	4 : 15	3 : 33	3 : 20	2 : 39	2 : 22
	When stepdown fix not received				Rate of descent	ft / min	421	527	632	737	843	948
	860 (454)	860 (454)	860 (454)	860 (454)			Final approach distance / altitude (height)					
Circling*	880 (474)	900 (494)	1000 (594)	1100 (694)	Distance		6	5	4	3		
*Circling south of aerodrome only.					Altitude (height)		2630 (2224)	2310 (1904)	2000 (1594)	1680 (1274)		

**INSTRUMENT  
APPROACH  
CHART - ICAO**

**Wrocław - Strachowice**  
VOR y  
RWY 29 (CAT A/B/C/D)

FIX / POINT	LATITUDE	LONGITUDE	FIX FORMATION	
IAF DVOR/DME WCL	51°05'33.6"N	016°55'08.2"E		
FAF	51°02'50.3"N	017°03'59.0"E	115.97° GEO (112° MAG) DVOR WCL	6.21 NM DME WCL
SDF	51°04'57.8"N	016°57'05.1"E	115.97° GEO (112° MAG) DVOR WCL	1.37 NM DME WCL
MAPt	51°05'56.7"N	016°53'53.0"E	295.97° GEO (292° MAG) DVOR WCL	0.88 NM DME WCL
Final approach descent angle: 3.00°				