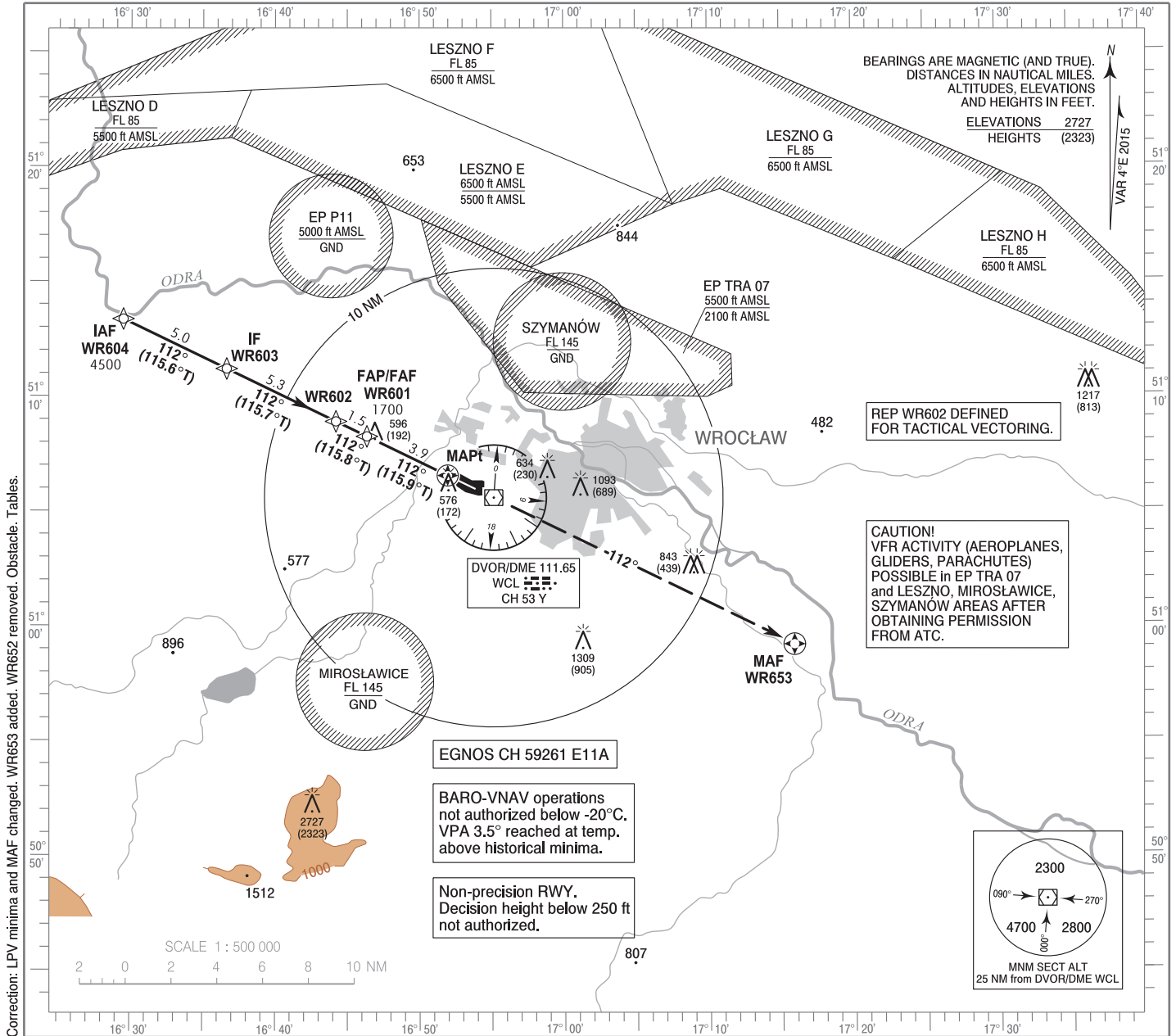


**INSTRUMENT  
APPROACH  
CHART - ICAO**

AERODROME ELEV 406 ft  
THR RWY 11 ELEV 404 ft  
HEIGHTS RELATED TO THR RWY 11

Poznań APPROACH 127.225  
Wrocław TOWER 120.250  
ATIS 124.325

**Wrocław - Strachowice  
RNAV (GNSS)  
RWY 11 (CAT A/B/C/D)**

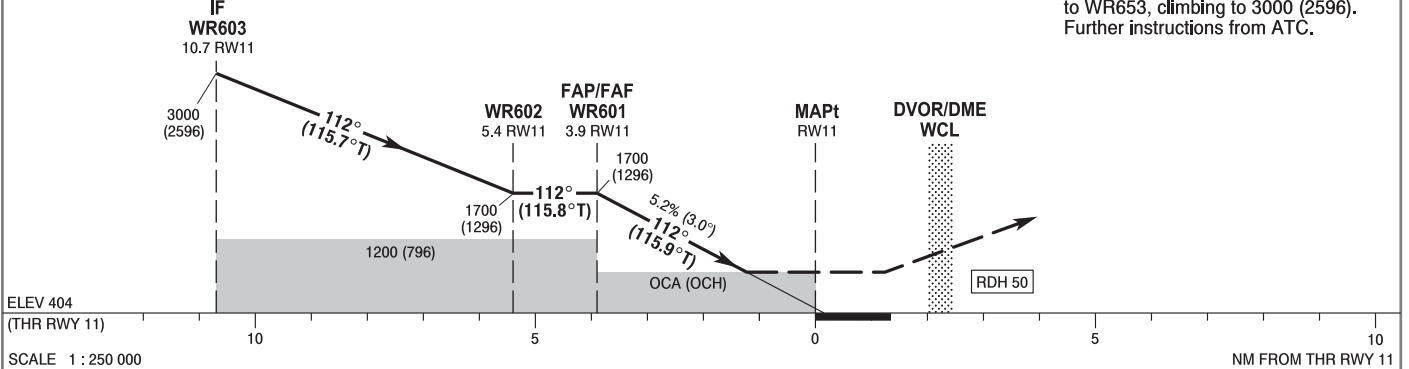


Correction: LPV minima and MAF changed. WR653 added. WR652 removed. Obstacle. Tables.

TRANSITION ALTITUDE 6500

**MISSED APPROACH**

Climb straight ahead on course 112° to WR653, climbing to 3000 (2596). Further instructions from ATC.



		OCA (OCH)				Distance FAF - MAPt 3.9 NM							
Cat. of ACFT		A	B	C	D	Speed	kt	80	100	120	140	160	180
		Straight - in	LNAV	850 (446)	850 (446)	850 (446)	850 (446)	Time	min : s	2 : 57	2 : 21	1 : 58	1 : 41
LNAV / VNAV	710 (306)		720 (316)	730 (326)	740 (336)	Rate of descent	ft / min	420	530	630	740	840	950
LPV	612 (208)		624 (220)	632 (228)	642 (238)	Final approach distance/altitude (height)							
Circling (OCH AAL)*		880 (474)	900 (494)	1030 (624)	1490 (1084)	Distance					3	2	
*Circling south of aerodrome only.						Altitude (height)					1420 (1014)	1100 (696)	