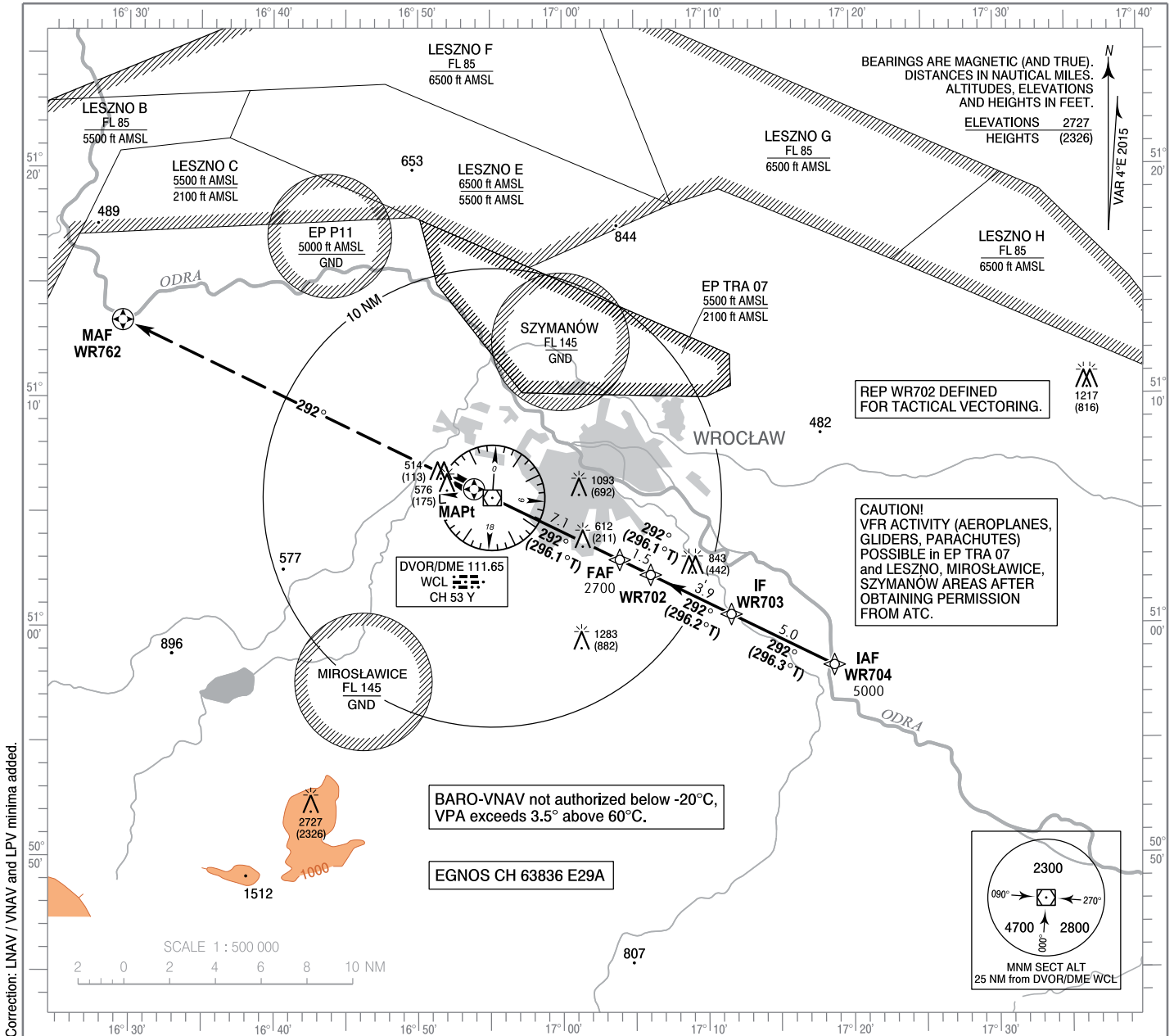


**INSTRUMENT
APPROACH
CHART - ICAO**

AERODROME ELEV 406 ft
THR RWY 29 ELEV 401 ft
HEIGHTS RELATED TO THR RWY 29

Poznań APPROACH 127.225
Wrocław TOWER 120.250
ATIS 124.325

**Wrocław - Strachowice
RNAV (GNSS)
RWY 29 (CAT A/B/C/D)**

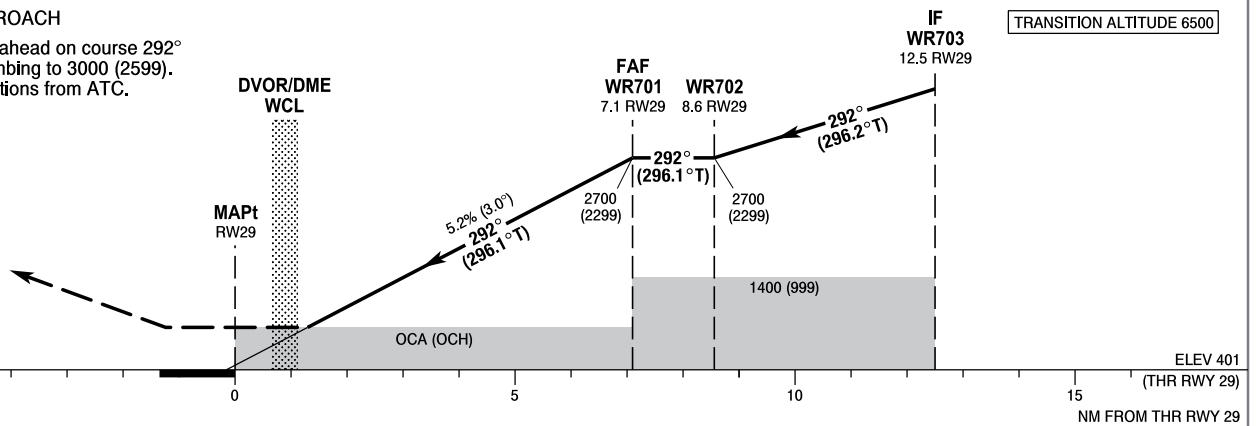


Correction: LNAV / VNAV and LPV minima added.

MISSED APPROACH

Climb straight ahead on course 292° to WR762, climbing to 3000 (2599). Further instructions from ATC.

TRANSITION ALTITUDE 6500



SCALE 1 : 250 000

OCA (OCH)					Distance FAF - MAPt 7.1 NM								
Cat. of ACFT		A	B	C	D	Speed	kt	80	100	120	140	160	180
		Straight - in	LNAV	860 (459)	860 (459)	860 (459)	860 (459)	Time	min : s	5 : 18	4 : 14	3 : 32	3 : 02
LNAV / VNAV	690 (289)		700 (299)	710 (309)	720 (319)	Rate of descent	ft / min	430	540	640	750	850	960
LPV	633 (232)		645 (244)	653 (252)	664 (263)		Final approach distance/altitude (height)						
Circling (OCH AAL)*		880 (474)	900 (494)	1000 (594)	1100 (694)	Distance		6	4	2			
*Circling south of aerodrome only.						Altitude (height)		2360 (1959)	1730 (1329)	1090 (689)			