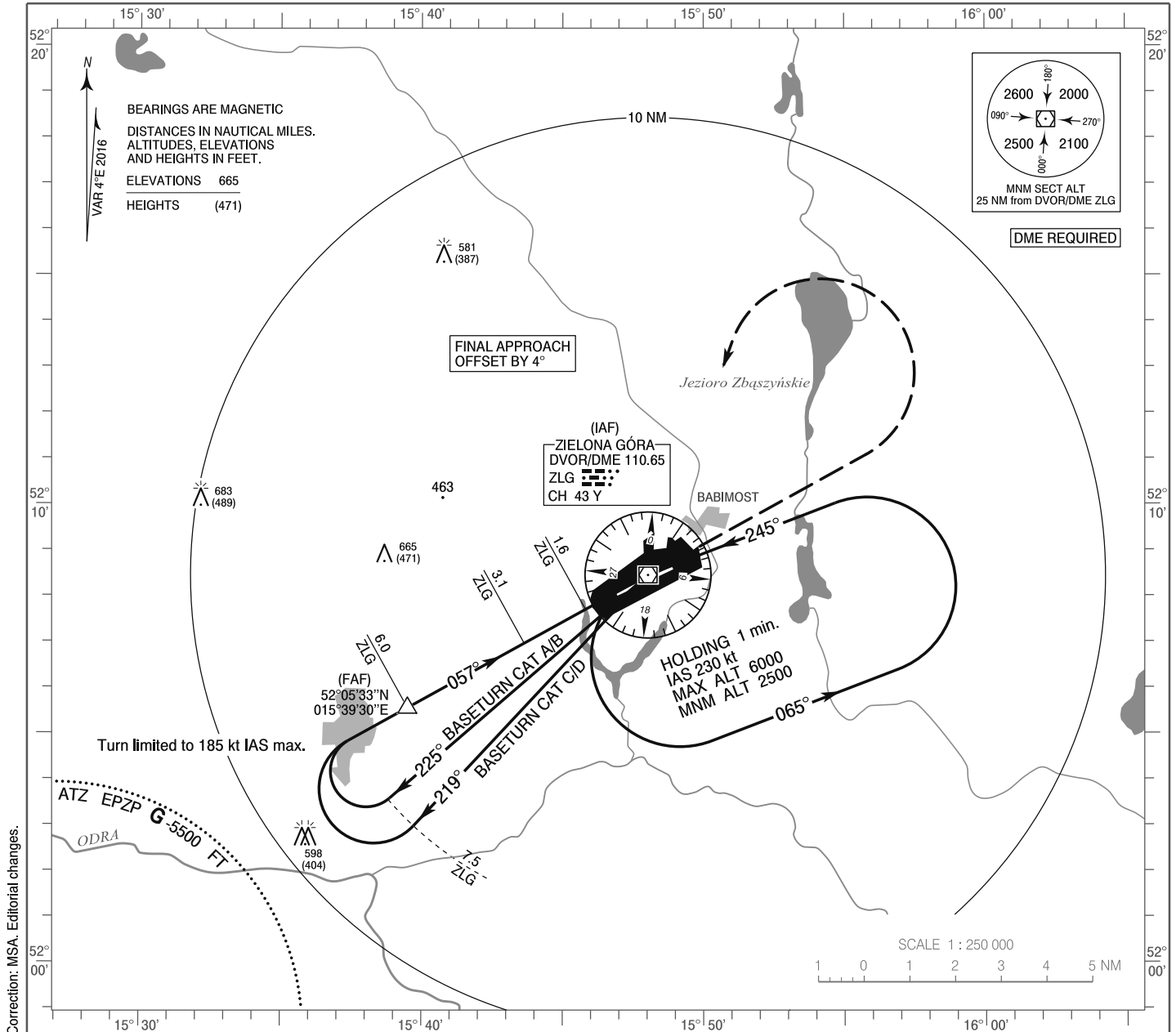


**INSTRUMENT
APPROACH
CHART - ICAO**

AERODROME ELEV 194 ft
THR RWY 06 ELEV 194 ft
HEIGHTS RELATED TO AD ELEV

Poznań APPROACH 129.025
Zielona Góra TOWER 118.750

**Zielona Góra - Babimost
VOR
RWY 06 (CAT A/B/C/D)**

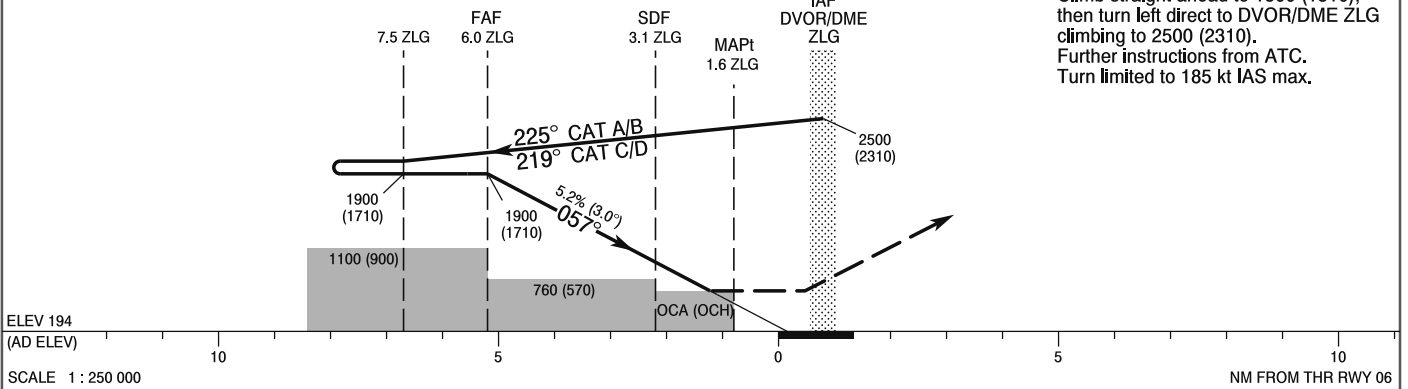


Correction: MSA. Editorial changes.

TRANSITION ALTITUDE 6500

MISSED APPROACH

Climb straight ahead to 1500 (1310), then turn left direct to DVOR/DME ZLG climbing to 2500 (2310). Further instructions from ATC. Turn limited to 185 kt IAS max.



| Cat. of ACFT | OCA (OCH) | | | | Speed | kt | Distance FAF - MAPt 4.4 | | | | | |
|---------------|--------------------------------|-----------|-----------|------------|---|----------|-------------------------|-----------|-----------|--------|--------|--------|
| | A | B | C | D | | | 80 | 100 | 120 | 140 | 160 | 180 |
| Straight - in | 640 (440) | 640 (440) | 640 (440) | 640 (440) | Time | min : s | 3 : 20 | 2 : 40 | 2 : 13 | 1 : 54 | 1 : 40 | 1 : 29 |
| | When stepdown fix not received | | | | Rate of descent | ft / min | 430 | 540 | 640 | 750 | 850 | 960 |
| Circling | 760 (570) | 760 (570) | 760 (570) | 760 (570) | Final approach distance/altitude (height) | | | | | | | |
| | 680 (490) | 750 (560) | 950 (760) | 1060 (870) | Distance | | 4 | 3 | 2 | | | |
| | | | | | Altitude (height) | | 1260 (1065) | 945 (750) | 625 (430) | | | |

**INSTRUMENT
APPROACH
CHART - ICAO**

**Zielona Góra - Babimost
VOR
RWY 06 (CAT A/B/C/D)**

| FIX / POINT | LATITUDE | LONGITUDE | FIX FORMATION | |
|-------------------------------------|--------------|---------------|---------------------------------------|--------------------|
| IAF DVOR/DME ZLG | 52°08'27.3"N | 015°48'02.5"E | | |
| FAF | 52°05'32.9"N | 015°39'30.3"E | 241.11° GEO (237° MAG) DVOR ZLG | 6.00 NM DME ZLG |
| SDF | 52°06'57.6"N | 015°43'38.6"E | 241.11° GEO (237° MAG) DVOR ZLG | 3.10 NM DME ZLG |
| MAPt | 52°07'41.9"N | 015°45'48.9"E | 241.11° GEO (237° MAG) DVOR ZLG | 1.60 NM DME ZLG |
| Final approach descent angle: 3.00° | | | | |